



Baba vha do vhuya lini?



Molteno



Khotsi a Shonisani vha shuma sa mutambi wa
kha thelevishini.

Mushumo wavho u a vha tshimbidza.





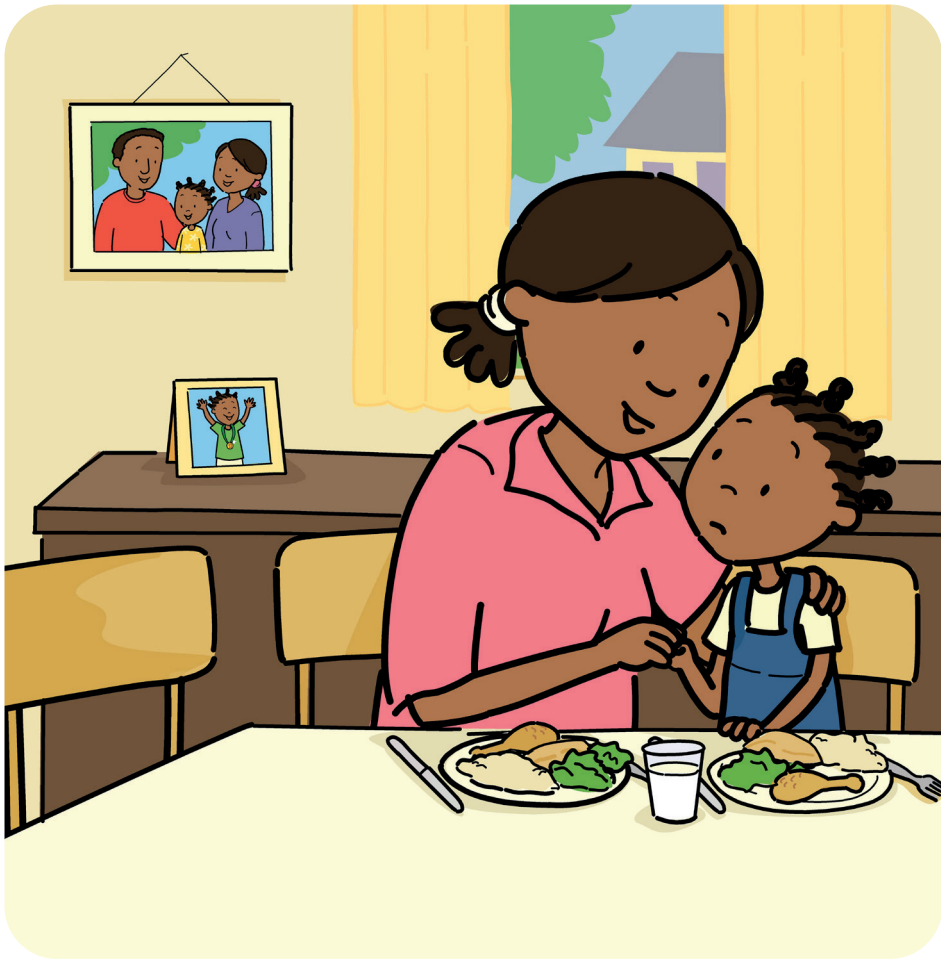
Baba vha ita vha tshi shumela kule.

Vha nga si vhe hayani vhege dzi no fhira mbili.



Duvha na duvha, Shonisani u vhudzisa mma,
“Baba vha do vhuya lini mushumoni? Ndo vha
tuvha.”

“Na nne ndo vha tuvha, Shonisani,” vha ralo
mma, vha tshi khou mu kuvhatedza.





Baba na vhone vho ɸvhesa Shonisani.

“Ndi tama u vhona Shonisani,” vha ralo u humbula.



Mbilu ya Shonisani i khou vhavha. Miḽodzi i
khou elela na marama. O ḽuvhesa khotsi awe!
O ḽuvhesa u kuvhatedziwa ngavho.
O ḽuvha u sea navho.





Baba vha amba na Shonisani.

“Ndi na mafhungo avhuḏi! Mashudu vhukuma ndi a uri ndi khou vhuya hayani matshelo. Ni tea u tou lindela ḏuvha fhedzi!” vha ralo. Shonisani o takalesa!



Baba vha vhuya hayani!

Shonisani a vha gidimela u vha ṭanganedza,
na u vha kuvhatedza.

“Ndi a vha funesa, Baba. Ndo takalesa vho
vhuya!” u ralo u amba.

“Na n̄e, dzuvha ɿa mbilu yanga. Na n̄e!” vha
ralo baba.

