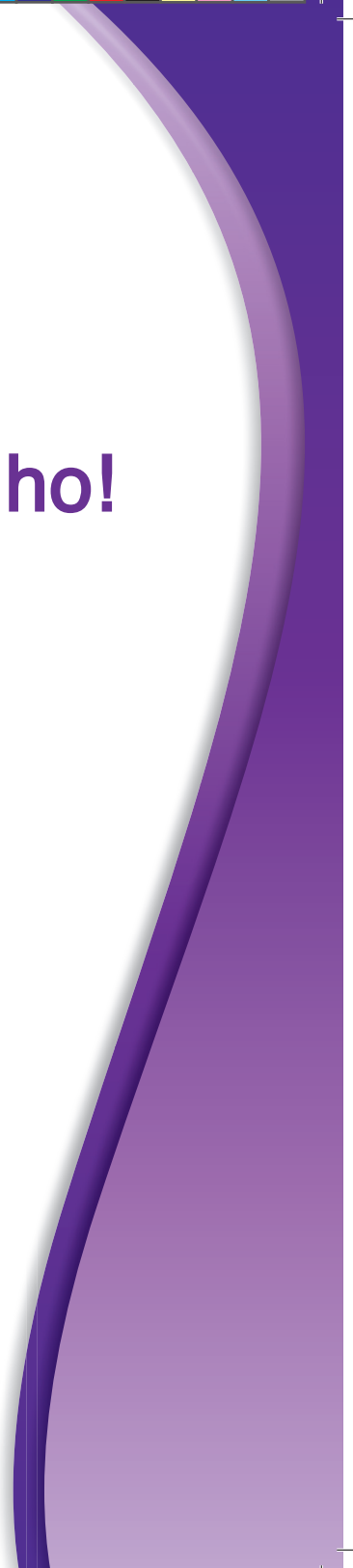




Phumu o takalaho!



Mishumo Maphaha





Phumu ndi musidzana o takalaho.

U takalela u tamba na mukomana wawe
Phuluso.

U takalela u tamba na Diego, tshimange
tshawe tshitshena.





Phumu u takalela u vha a tshikoloni.

U takala musi mudededzi vha tshi mu
humbela uri a ime phanḁa ha kiḁasi a vha
vhalele.

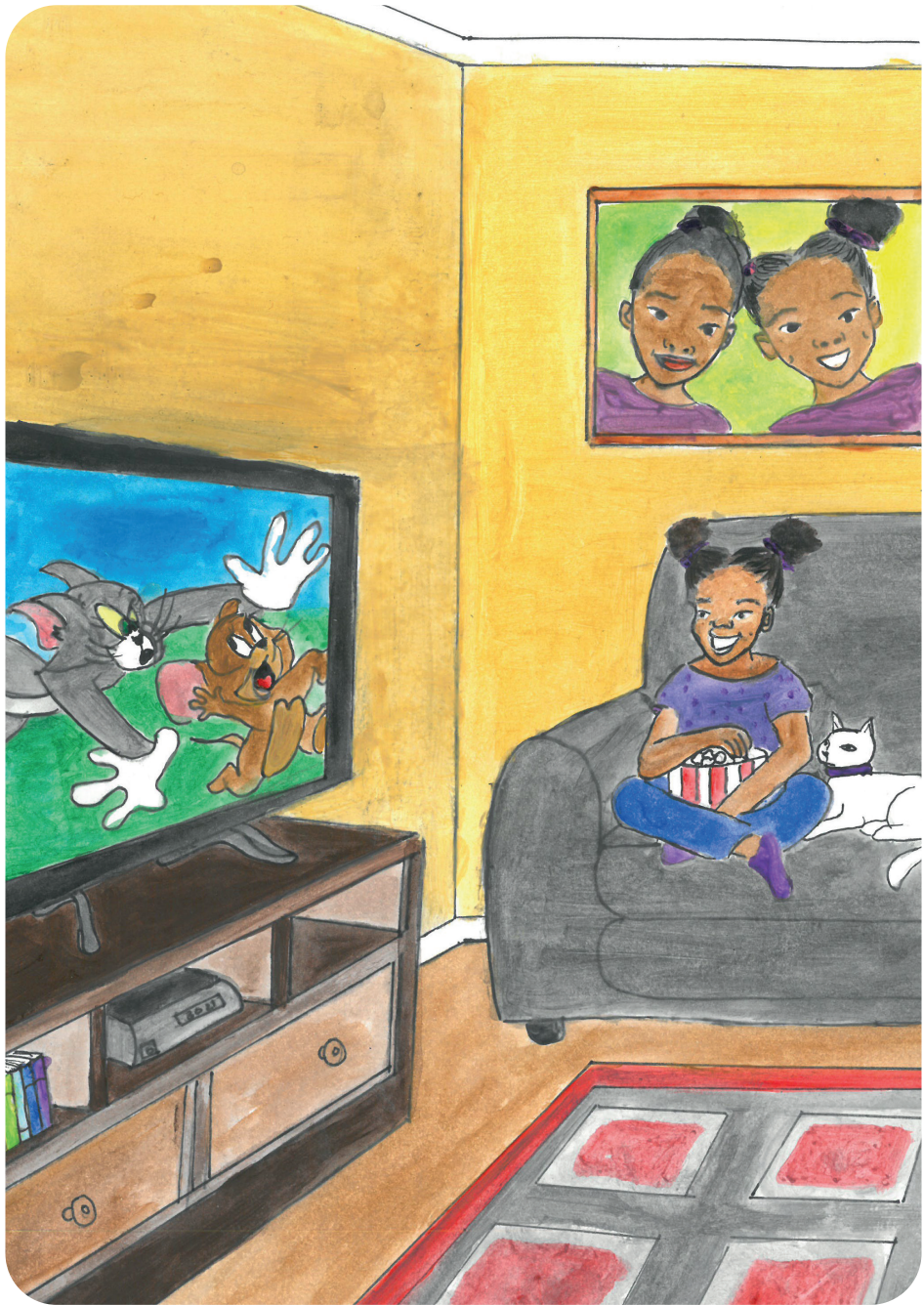




Phumu u a takala a tshi ṭalela zwiṭitshi zwa
zwipopai.

Diego u ṭalela nae.

Phumu u sea o sea!





Phumu u takalela u vha a phakhani.

U funesa u tamba kha devhu.

Phumu u vhona Diego murini.





Phumu u takala musi vha tshi ya
mavhengeleni.

U takalesa musi mme awe vha tshi vha
rengela zwiambaro zwavhuḽi!

Vhuvhili havho, Phumu na Phuluso vha funa
muvhala wa phephuḽu!

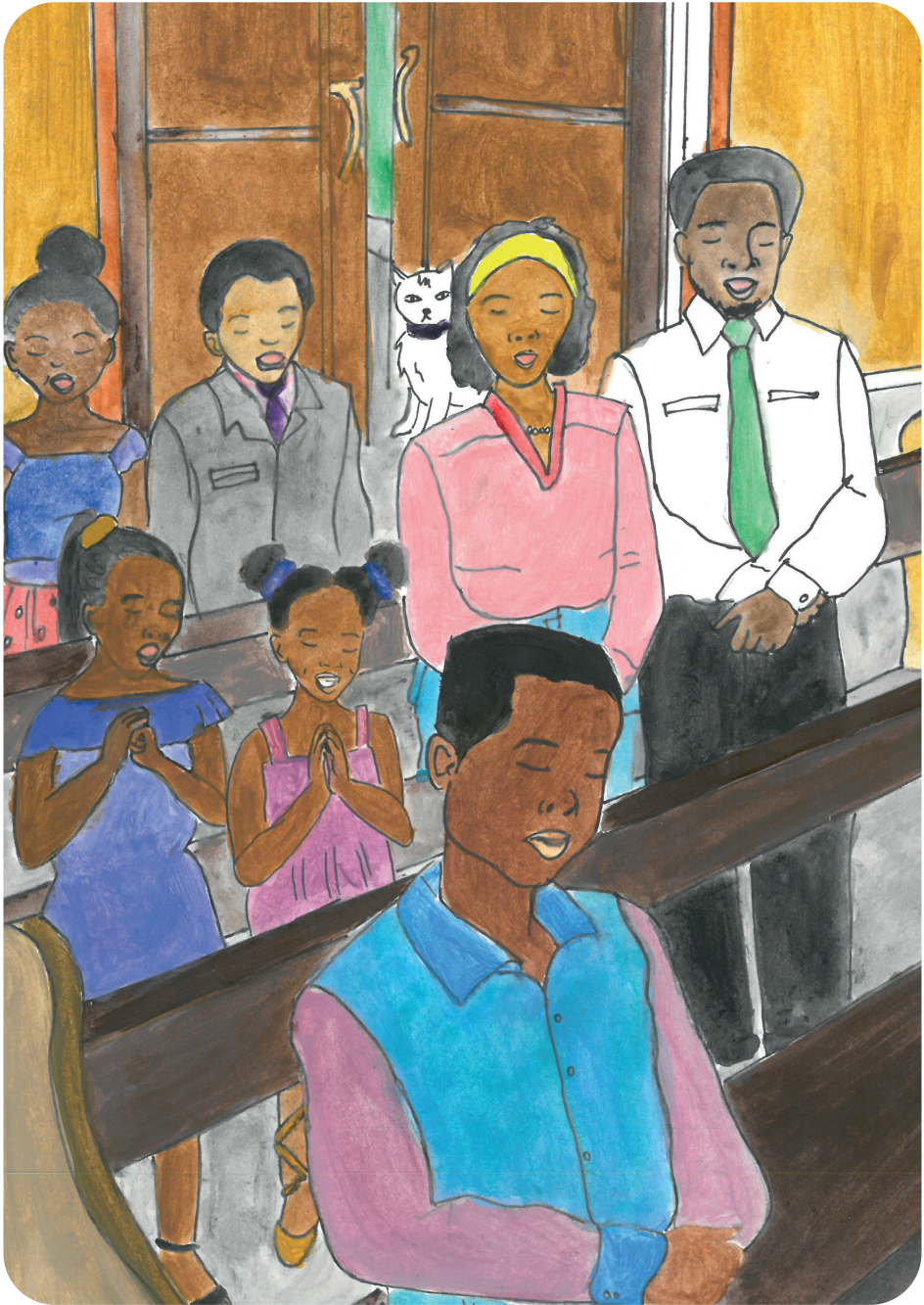




Phumu u takala musi a kerekeni.

U funesa u imba na u rabela.

Diego tshi mu imela muḽangoni.





Phumu u takala musi muṭa wa hawe u tshi kuvhangana.

U takalesa musi hu tshi ḽiwa ḽama ya khuhu na raisi.

Diego na tshone tshi funa ḽama ya khuhu.





Phumu u na vhutshilo vhu takadzaho!

Ngangoho ndi musidzana o takalaho.
U takalesa musi a na Diego!