



# Ingwenya lenelunya

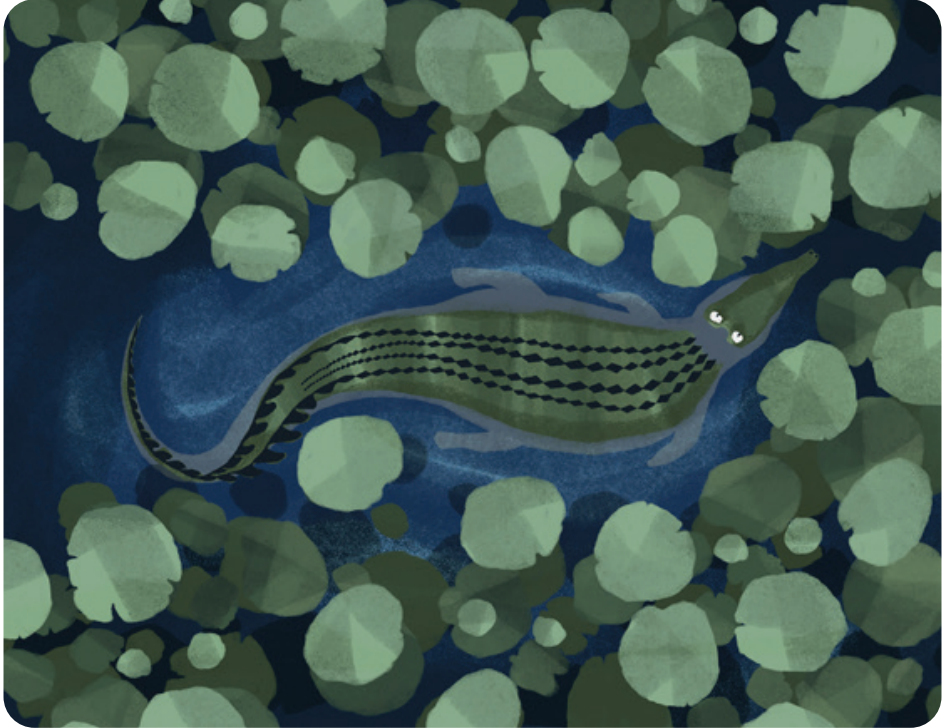


**Charlotte Galane**





Emfuleni lotsite bekuhlala ingwenya lenkhulu.  
Ligama layo bekunguMehlomabi. Mehlomabi  
abenesitunge. Lomfula bewuhlala ubindzile.





Wacasha tonkhe tilwane kute ativise  
ngekunatsa yedvwa emfuleni.

Abetsandza nekuchukuluta letinye tilwane.



Emini abetsandza kuhlala edwaleni  
atsamele lilanga.

Abetsanyela phansi ngemsila wakhe.





Ebusuku, tilwane tanyonyoba tifuna kunatsa emanti.

Mehlomabi watibona, wetama kutibamba.



Tilwane tatumela Gungumbane kutsi  
ayokhulumisana naMehlomabi.

Betifuna kucolisa kuMehlomabi.





Tavumelana kutsi tikhulumisane naye.

Gungumbane watjela Mehlomabi kutsi  
kufanele tonkhe tilwane letingasemfuleni  
tabelane ngalamanti.

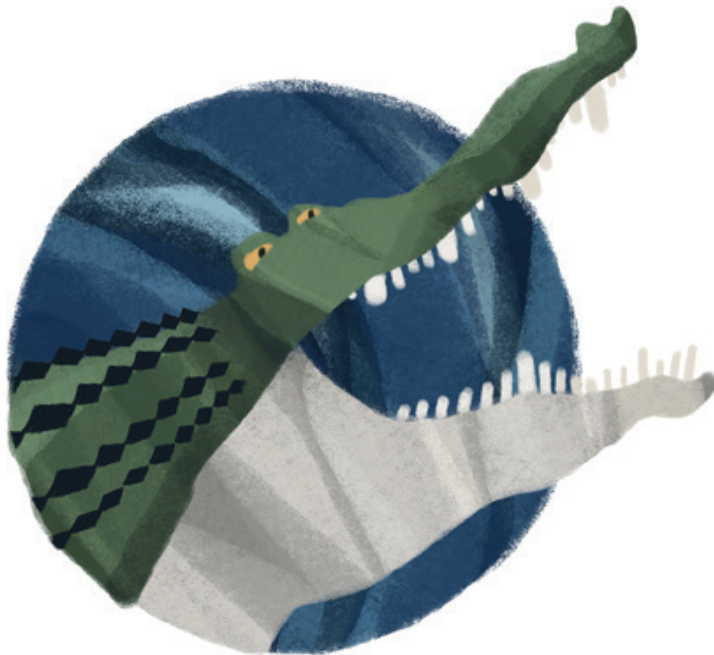
Mehlomabi wangavisisi.



Mehlomabi naGungumbane bagcina bangakavumelani.

Mehlomabi watsi, “Akwatiwe nguwo wonkhe. Ngiyinkhosi yemfula. Kute lotawunatsa emfuleni wami.”

Gungumbane wabuyela emuva etilwaneni aphotseke kabi.







Igungumbane yabuya nembiko. Yabatjela kutsi Mehlomabi uyachubeka ngekwalisa kwakhe.

Tilwane tahlela kutsi tibekele Mehlomabi lugibe.



Ngalelo lilanga ekuseni, Mehlomabi  
wabambeka elugibeni.

Mehlomabi wabona ligundwane ehlatkini.  
Wacela ligundwane kutsi lijube inethi  
yelugibe. Mehlomabi wetama kubaleka.





Letinye tilwane tambona. Tabamba  
Mehlomabi.

Tamtsatsa tamuyisa enkhosini Ndlovu.



Gungumbane wabika Mehlomabi enkhosini.

Watsi, “Nkhosi Ndlovu, imphilo lendze!  
Mehlomabi akasivumeli kunatsa emanti  
emfuleni.”

Mehlomabi abetfuke kakhulu.





Inkhosi yatsi, “Mehlomabi, unelichuku.  
Lamuhla lilanga lekugcina kutsi walele  
labanye kunatsa emfuleni.

Ngete sakuvumela kutsi uhlukubete letinye  
tilwane embusweni wami.”



Inkhosi beyiphatseke kabi.

Yatsi, “Nonkhe ningebami. Tonkhe tinsita embusweni wami kufanele tisite nonkhe.”

Mehlomabi watisola ngaloko lakwentile.





Ingwenya Mehlomabi wasivisisa sigwebo sakhe.

Wacela kutsetselelwa etilwaneni letinye.

Tilwane tacala kudzingidza loludzaba.

Tavuma kumtsetselela.



Kusukela lapho, tilwane taphila kahle  
ngekujabula.

Tonkhe tativisa ngekunatsa emfuleni  
tikhululekile.

