



O a tlhobaela



Gabogaisane Sikhipa





Bosigong ba gompiano, Dithwasana o a tlhobaela. Ga a na boroko. O fetoga a fetogile. Molato ke eng? A tsoga fa gare ga mpa ya bosigo. O tlaa dira eng kgotsa a leba kae?





Dithwasana o nna le mmaagwe,
MaDithwasana kwa motseng o o bidiwang
Thwaseng. Matsatsing a, Dithwasana o
akanya thata ka leina la gagwe. O ipotsa ka
metlha gore leina le letlile jang. Gongwe a ka
botsa mmaagwe. Gongwe mmaagwe o tlaa
tenega. A ipotsa dipotso tse di sa feleng.



“Kamoso re tshwanetse go tsoga ka mahube.
Ke go isa motseng wa Tlwadi go thwasa”ga
bua MaDithwasana a sa bontshe setshego”.
Dithwasana a sulafalelwa fa a utlwa mafoko
ao. A ipona a kuelelsa e bile a epa ditlhare.





“Ke a kopa tlhe MaDithwasana mme, ga ke batle go thwasa. Ke sale monnye, ebile ga ke rate dingaka. Ga ke rate go dirisa dithhare tsa setso. Ke batla go nna mooki.”



“Ke setse ke go tihopile. O tlike go thwasa.
Ke go theile leina Dithwasana gonne ke
baakanyetsa letsatsi le. Re tlike go tsamaya
ka mahube.”





Bosigogare, Dithwasana a tsoga. A leba phaposiborobalo ka lorato. Aa ga a kitla a tsema mathateng ka seo a se akanyang? A ga a kitla a gopola mmaagwe?



Thwa, thwa, thwa! Ga utlwala modumo. Ke Dithwasana a tsamaya ka mo ntlong a thoba. A leka go fitlha modumo. Go lefifi mme ga a batle go dira modumo. Fa a ka thula sengwe, se ka tsosa modumo.





Fa a le mo tseleng, Dithwasana a bona monna a mo lebile. A tshoga, a iphitlha mo ditlhareng. Ga utlwala, thwa, thwa! Monna a goeletsa, “Ke mang yoo, a o motho?” Dithwasana a araba, “Ke nna tlhe rra!”

“O lebile kae bosigo jana mosimane? A ga o tshabe diphologolo tse di tlhaga tsa naga? Nna ke Thutlwa. Bua ka bonako ke bosigo.”



“Leina la me ke Dithwasana, ke tswa motseng wa Thwaseng. Ke tshabela mme, MaDithwasana. O batla gore ke thwase. Ga ke batle go thwasa. Ke kopa thuso tlhe!”





“Tloga fa! Bana ba gompiano le tletse mekgwa e maswe. Ga le utlwelele batsadi. Le nna ke lethwasana, ebile ke dumelana le mmaago! Ga go na molato fa motho a thwasa!” Monna a bua a galefela Dithwasana.



Dithwasana a tloga ka pelo e e botlhoko a sa bona thuso. Ijoo wee! O tlike go dira eng? Dithwasana a utlwa medumo e e tshosang ya bosigo. Gongwe ke tau, kgotsa phokoje.





Thwa, thwa, thwa ! Dithwasana a tsamaya a leba kafa le kafa. Pelo e uba thata. A bona mosadi mongwe yo moleele a mo lebile. A leba kwa le kwa, a palelwa ke go tshaba. “Mosimane o ya kae? Nna ke Kgwako, bua ke utlwe”



“Leina la me ke Dithwasana, ke tswa
Motseng wa Thwaseng. Ke tshabela mme,
MaDithwasana. O batla gore ke thwase. Ga
ke batle go thwasa. Ke kopa thuso tlhe!”



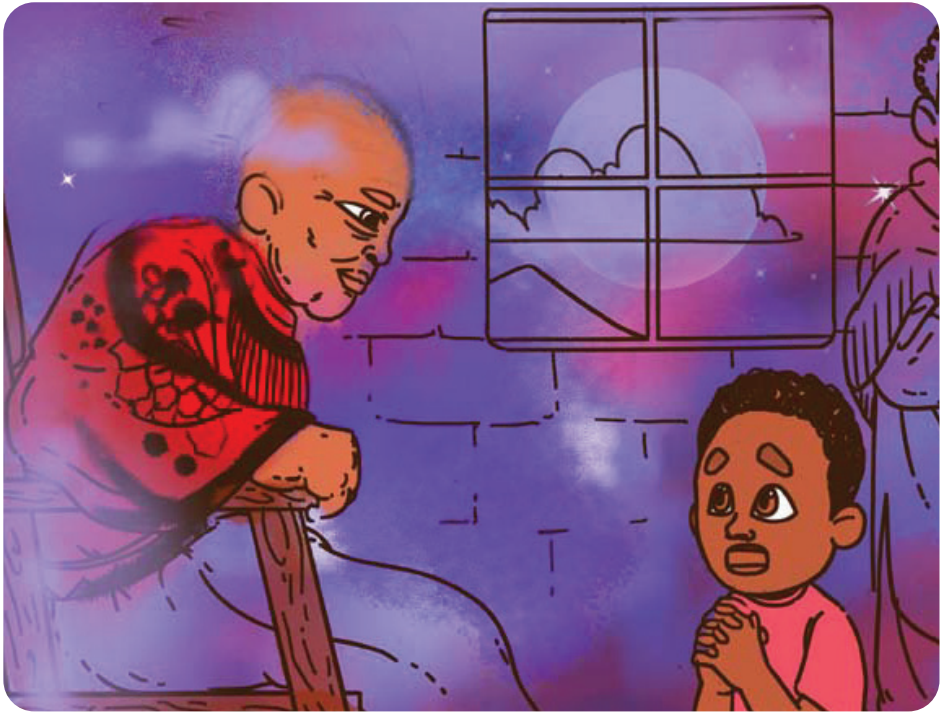


“Ga se mokgwa o siameng go tshabela batsadi,” ga bua mosadi. Dithwasana a simolola go lela. “Nka se kgone go go thusa. Goreng o sa batle thuso kwa go kgosi Kutlwanong kwa motseng wa Kutlwanong? Gatwe o rata go sireletsa bana” Kgwako a mo eletsa. Dithwasana a itumelela seo.



Thwa, thwa, thwa! Dithwasana a pagama dithaba le dithabana. A leba kwa ga kgosi Kutlwano, motseng wa Kutlwanong. O ne a bona thuso mme a ikutlwa a na le tshepo. Dinao tsa nna bofefe. A itlhaganela.



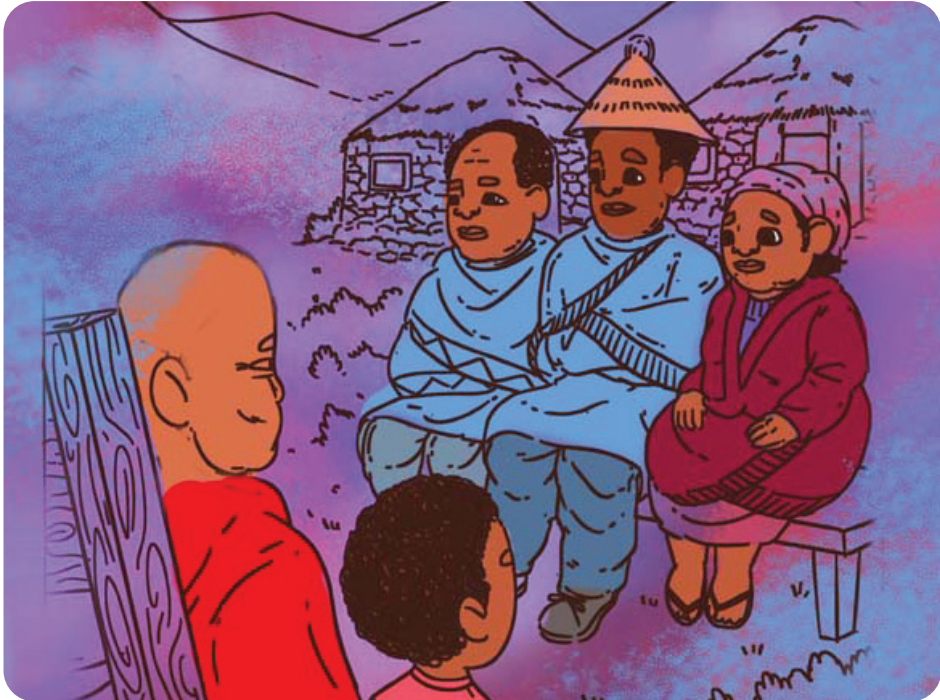


Dithwasana a fitlha kwa kgosing. A fitlhela monnamogolo yo o tlhogo e tshweu a ntse ka fa ntle. A kopa go bona kgosi, mme ba mo letlelela. A khubama fa pele ga kgosi a re, “Kgosi ya me, ke kopa thuso tlhe!”

“Tswelela, ke go thuse ka eng mosimane?” ga bua kgosi.



Leina la me ke Dithwasana, ke tswa
Motseng wa Thwaseng. Ke tshabela mme,
MaDithwasana. O batla gore ke thwase. Ga
ke batle go thwasa. Ke kopa thuso tlhe!





Thwa, thwa, thwa! Kgosi Kutlwano le
Dithwasana ba leba motseng wa Thwaseng.
Ba fitlha ka pele gonne motse o ne o se
kgakala. Kgosi a bitsa MaDithwasana. A bua
le ena. Dithwasana a itumela thata. A santse
a itumetse, a utlwa leina la gagwe le bidiwa.



“Dithwasana! Dithwasana! Tsoga! Ke nako ya go ya sekolong! O tlaa nna thari.”
Mmaagwe a mo tsosa. Fa a bula mathho, a lemoga fa a le fa gae. Dithwasana a itumela thata fa a lemoga go re o ne a lora. Bathong e ne e le toro fela!

