



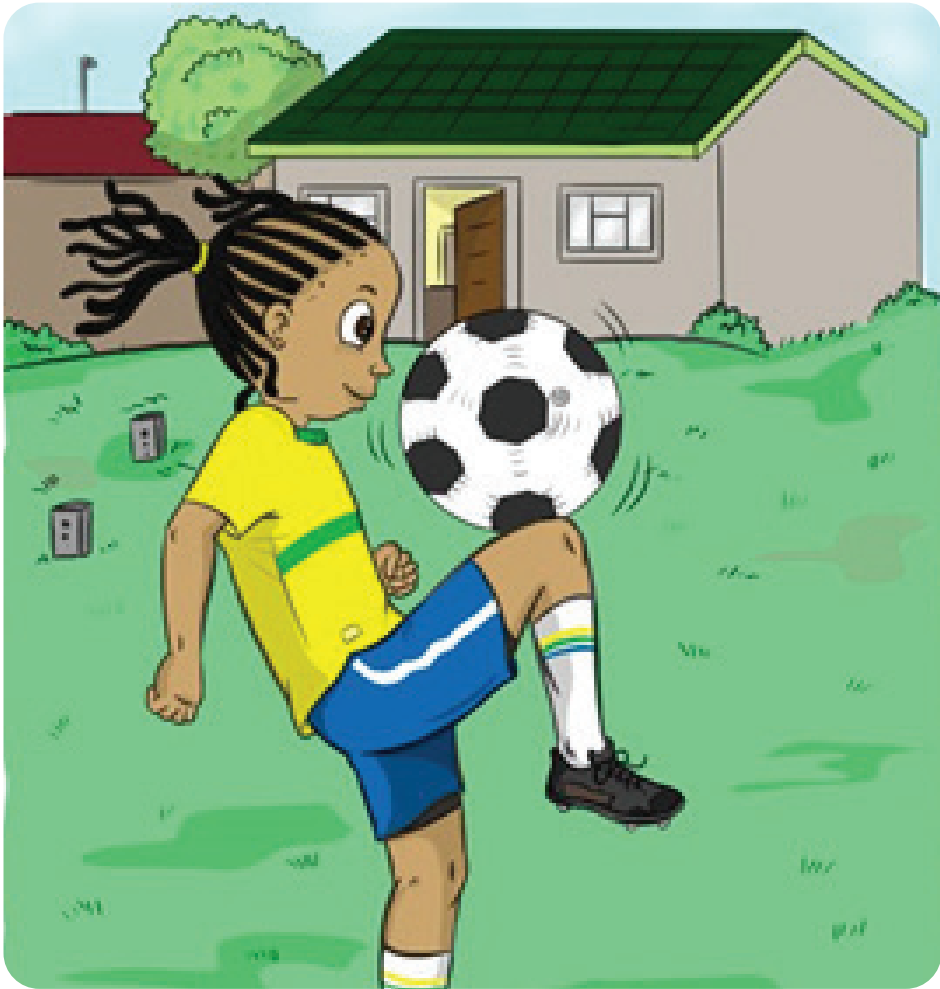
Umdlali obalaseleyo



NguErlina Makgalemele



UNolutsha wayeyintombazana eyayithanda ukudlala ibhola ekhatywayo namakhwenkwe. Wayethanda nokuyibukela kumabonakude. Yayingamonwabisi uMakhulu wakhe le nto kaNolutsha.





Ngenye imini uNolutsha wacela utata wakhe ukuba amthengele izihlangu zebhola ekhatywayo..



Wayesithi xa edlala ibhola ekhatywayo namakhwenkwe, amngcungcuthekise ngokumana ezingqubekisa kuye.





Ayizange imtyhafise loo nto kodwa
waqhubeka eziqhelanisa ekhaya
nomntakwabo owayesoloko emkhuthaza.



Umakhulu wayechasene nale nto emane emthethisa efuna atyhafe. Wayemgrogrisa ngelithi uza kufihla nezo zihlangu zakhe zebhola ekhatywayo.

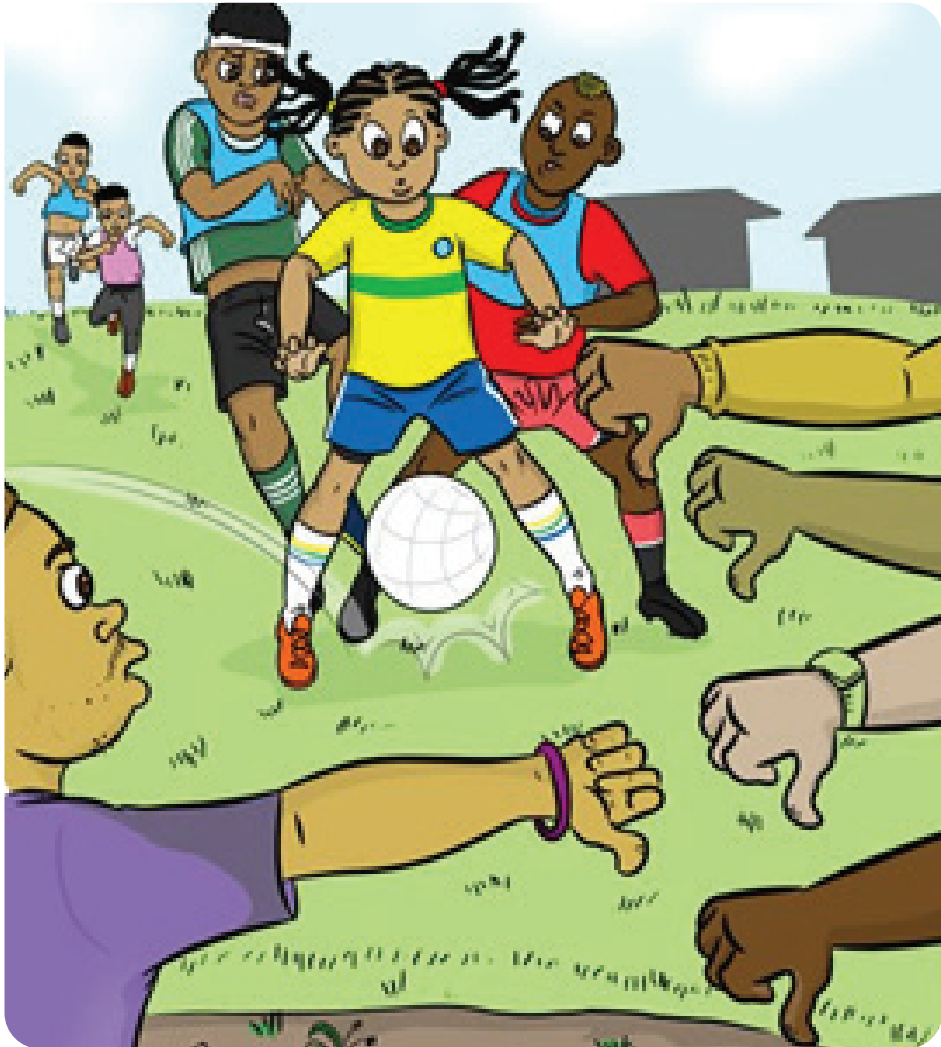




UNolutsha wayesiba nenkani aye kudlala namakhwenkwe. Wayenqwenela ukudlala ngentliziyo yakhe yonke.



Oku kwawacaphukisa ngakumbi amakhwenkwe asuka adlala gadalala naye. UNolutsha wayengatyhafi yile nto yala makhwenkwe.

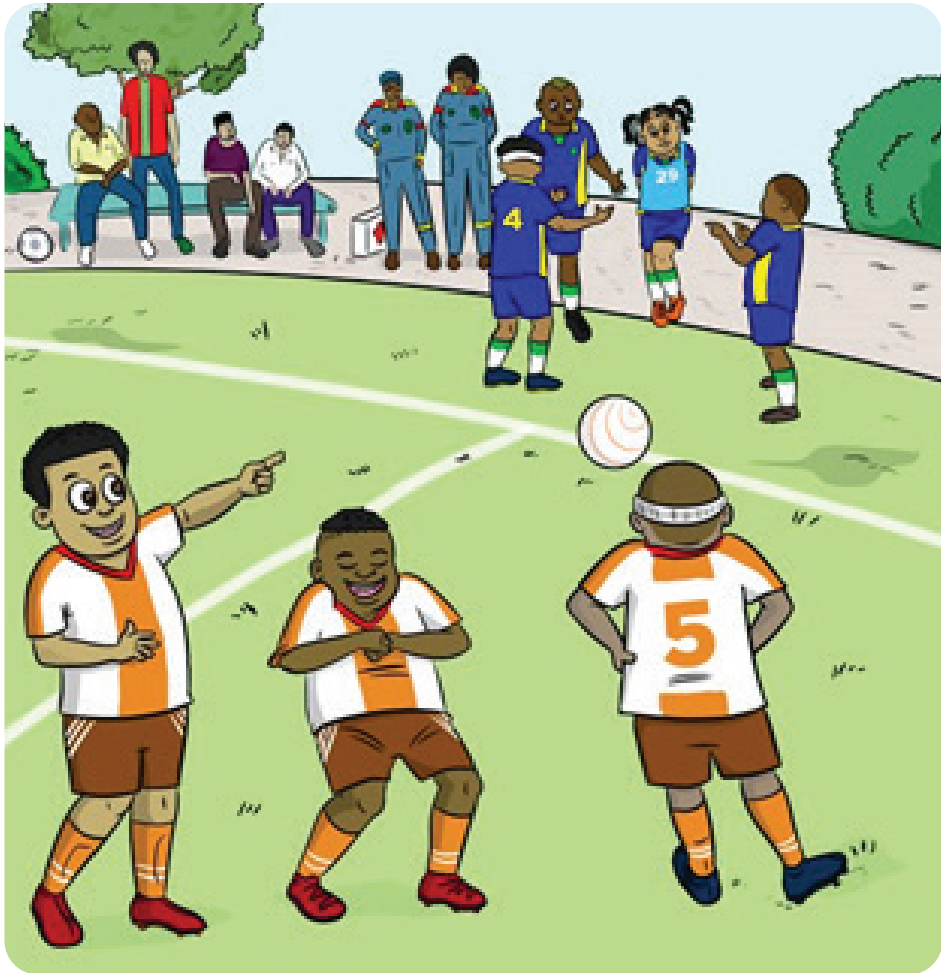




UNolutsha waqhubeka nokuzilolonga ekhaya ngokungathi akwenzeki nto. Wayeqhubeka edlala, naxa eyedwa.



Ngenye imini iqela lamakhwenkwe laliswele umdlali. Babemfuna ngokwenene umntu wokungciba indawo kwiqela labo. Abazange bamcenge nokumcenga uNolutsha ukuba athathe indawo yomdlali.





UNolutsha wangena ebaleni enamandla
angapha kokuqonda ebaleka egqiba ibala.
Wafaka inqaku lempumelelo ababukeli
bakhwaza ngebhongo besithi, No...lu ... tsha!
No...lu ... tsha!!!!



Ukusukela loo mini, amakhwenkwe
akonwabela ukudlala ibhola ekhatywayo
noNolutsha. Ayamkela into yokuba
uNolutsha ungumdlali webhola ekhatywayo
obalaseleyo





UNolutsha wawongwa ngendebe.
Umntakwabo wazimasa loo msitho eze
kumxhasa. Naye uMakhulu wayevuyisana
naye engasakhathali nokuba wayengafuni
ukuba adlale ibhola ekhatywayo
namakhwenkwe.



UNolutsha waba yintshatsheli kwibhola ekhatywayo. Amakhwenkwe ayefuna ukudlala ibhola ekhatywayo naye.





Uluntu lwaluzingca ngale ntombazana idlala ibhola namakhwenkwe. Abanye babenomdla wokubona le ntombazana idlala ibhola ekhatywayo namakhwenkwe.



UNolutsha waba lilungu eliphelelyo leqela lebhola ekhatywayo. Ukuba kuye kwenzeka nangasiphi isizathu angabikho ebaleni, iqela lakhe laliziva lingagqibelelanga.

