

Tshimange, kha tshi vhuye!

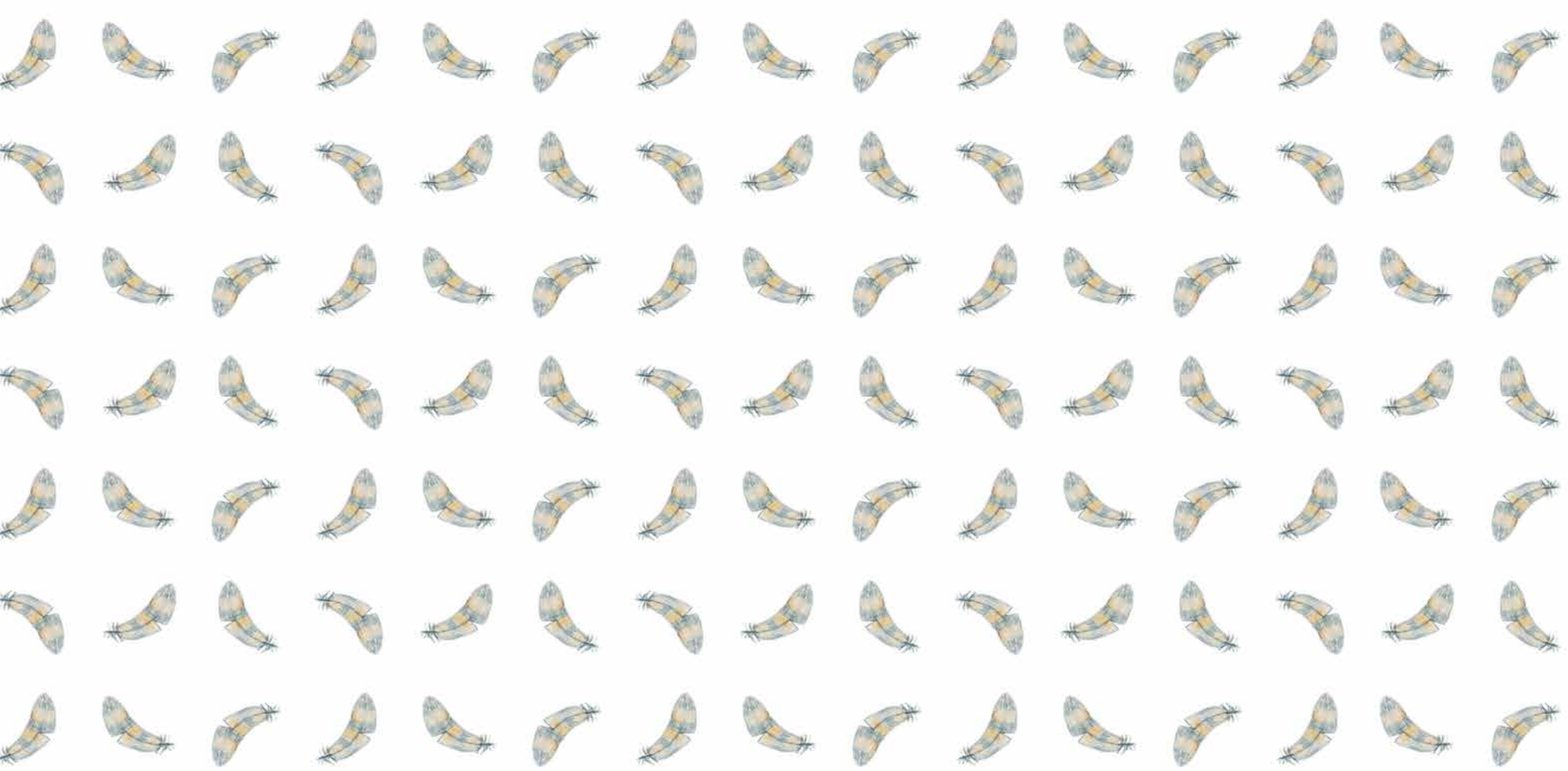


Karen Lilje Nicola Rijdsdijk Sam Scarborough

Tshimange, kha tshi vhuye!

Heyi bugu ndi ya:







Tshimange, kha tshi vhuye!

Illustrated by Karen Lilje

Written by Nicola Rijsdijk

Designed by Sam Scarborough

with the help of the Book Dash participants at Cape Town on 28 June 2014, listed here:

<http://www.bookdash.org/#20140628-cape-town>

Translated by Tshifhiwa Gangazhe

ISBN: 978-1-928365-05-1

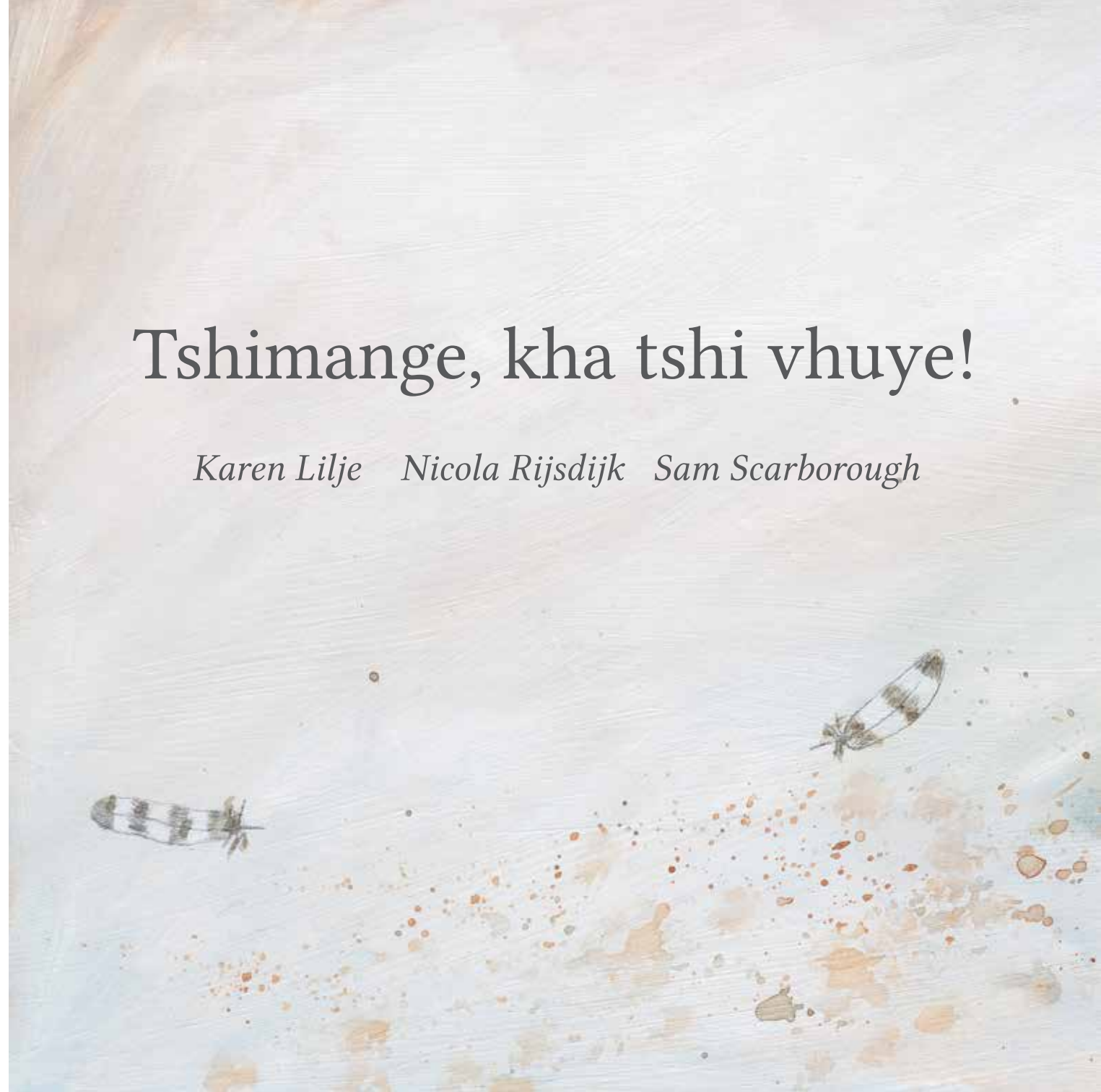
This work is licensed under a Creative Commons Attribution 4.0 Licence (<http://creativecommons.org/licenses/by/4.0/>). You are free to share (copy and redistribute the material in any medium or format) and adapt (remix, transform, and build upon the material) this work for any purpose, even commercially. The licensor cannot revoke these freedoms as long as you follow the following license terms:

Attribution: You must give appropriate credit, provide a link to the license, and indicate if changes were made. You may do so in any reasonable manner, but not in any way that suggests the licensor endorses you or your use. **No additional restrictions:** You may not apply legal terms or technological measures that legally restrict others from doing anything the license permits.

Notices: You do not have to comply with the license for elements of the material in the public domain or where your use is permitted by an applicable exception or limitation. No warranties are given. The license may not give you all of the permissions necessary for your intended use. For example, other rights such as publicity, privacy, or moral rights may limit how you use the material.

Tshimange, kha tshi vhuye!

Karen Lilje Nicola Rijsdijk Sam Scarborough



Tshimange, kha tshi vhuye!
Kha tshi ɔe tshi tambe na nɛe.





Kha tshi dzule manngini watsho.

Kha tshi dzule hafha!

Tshimange, kha tshi vhuye!
Hafho hune tsha kho gonya
hone ndi nthesa.





Tshimange, kha tshi vhuye!
Tshi songo bvela nnḁa.



Tshimange, kha tshi vhuye!
Hezwo a si zwatsho.





Tshimange, kha tshi vhuye!

Tsho fara mini afho?



Tshimange, kha tshi vhuye.



Heyo a si khonani yatsho!



Heyi, tshimange! Tsho vhuya?

Kha tshi dzule manngini watsho.
Ndi tshifhinga tsha vhukofhenyana zwino.



Tshimange?





