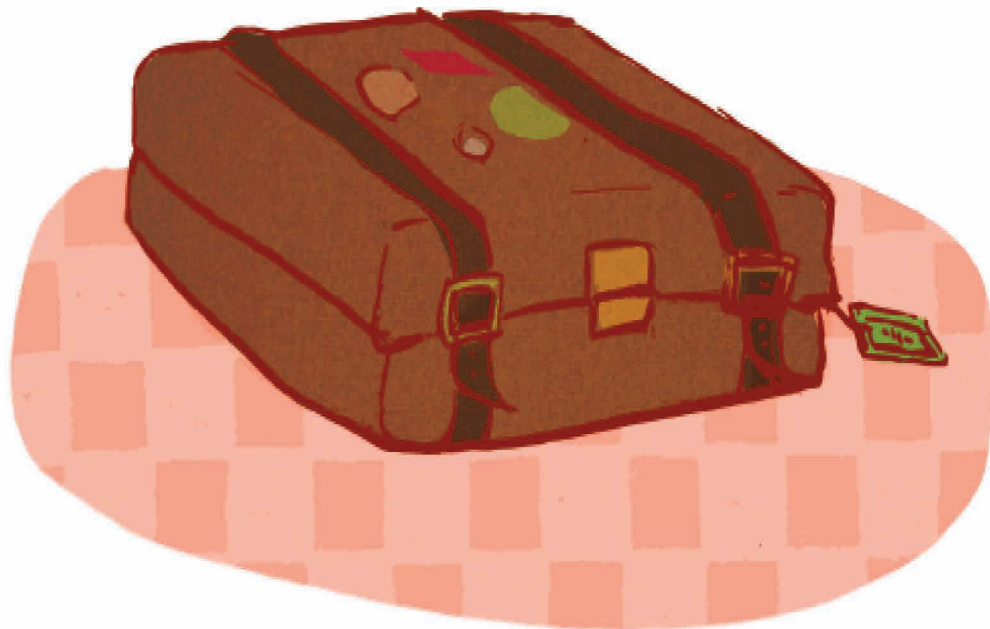




Phuthumennde

Heyi bugu yo thoma i kha isiZulu yo nwalwa nga Mbongeni Nzimande

Muoli ndi Elizabeth Pulles Mudzudzanyi ndi Leona Ingram



Yo talutshedzelwa u bva kha isiZulu nga Dorothy Mukhese





**Duvha la mutatisano wa u
tshina la sendela.**

**Hothe zwitteratani muñwe na
muñwe u khou amba nga zwine a
do ambara zwone.**







Lwazi u khou kanganyisea uri a nga ambara mini?
Gugu na vhone vha a vhilaela, vha ṭoda muḁuhulu a tshi
wina.

“Ndo ṭuvha gugu wa mukalaha,” Lwazi u humbula makhulu
wawe vho no lovhaho o ṭungufhala. “Gugu vho vha vha tshi
ḁo ḁivha uri vha itani.”







**Lwazi u hambela gugu uri vha rengise mafhuri u itela
u wana tshelede ya u renga zwiambaro.**

**Khoula Lwazi u khou rengisa mafhuri a so ngo vhibvaho
muḽi nga muḽi. A hu na ane a khou renga.**





Lwazi u dzula lufherani, a tshi elekanya zwine a nga ita.
A vhona phuthumennde n̄tha ha waidiropo,
ye gugu vha i vhetshela thungo.

A ima n̄tha ha tshidulo a tshi lingedza u fhahulula
phuthumennde ine ya vha na buse. Musi a tshi tou vula,
Lwazi ha kholwi maṭo awe.





**Kha phuthumennde hu na zwiambaro
zwavhuḍi zwa makhulu!**





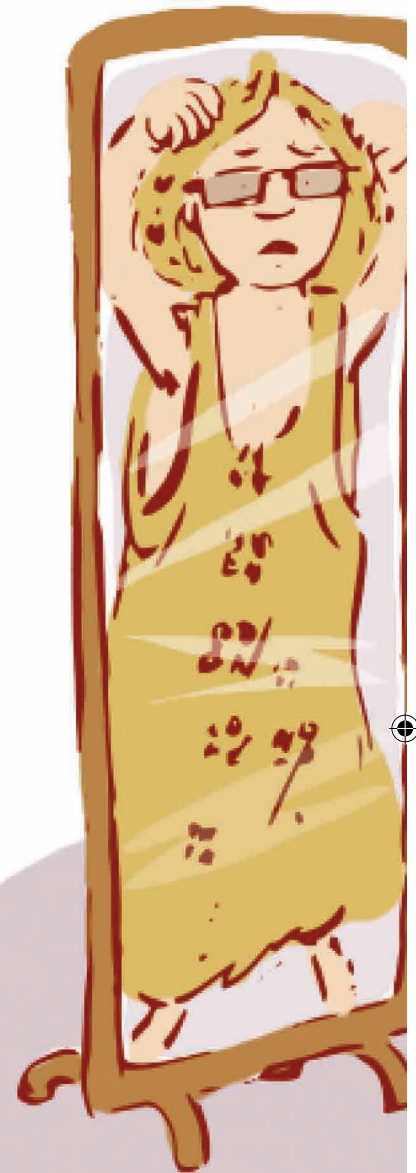
**Lwazi u a nyanyuwa
tshifhinga tshoṭhe a tshi humbula
nga muṭaṭisano.**





**Lwazi a ambara vese.
Ndi khulwanesa khae! Bannda la
muñadzi na lone a li khou mu lingana.**

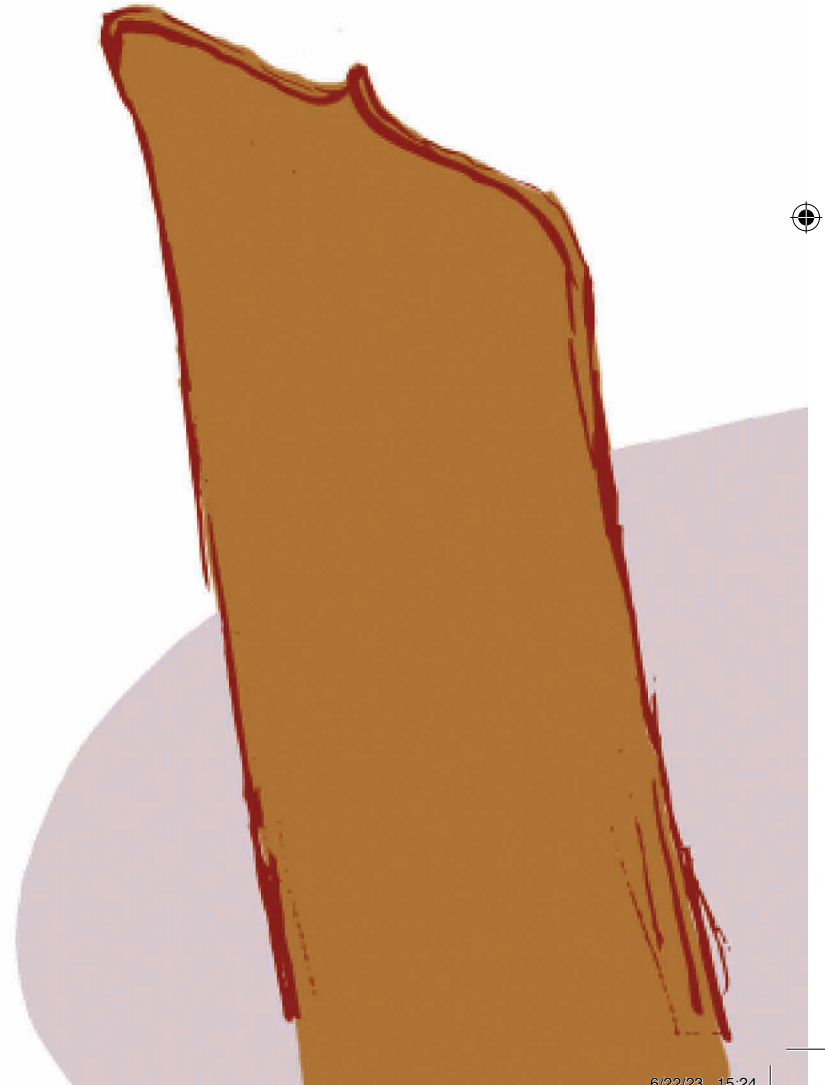
**O vhaisala muyani.
Tshiñwe na tshiñwe khae ndi tshihulu.**







**“Ni khou lilela mini Lwazi?” Gugu vha a mu vhudzisa.
“Tshiambaro hetshi ndi tshavhudi!”**





“A si tshavhudi,” ndi Lwazi a tshi femuluwa. “Muñwe na muñwe u do ntseza a ntsea!”

“Ndi a divha zwine nda tea u ita,” hu fhindula Gugu.



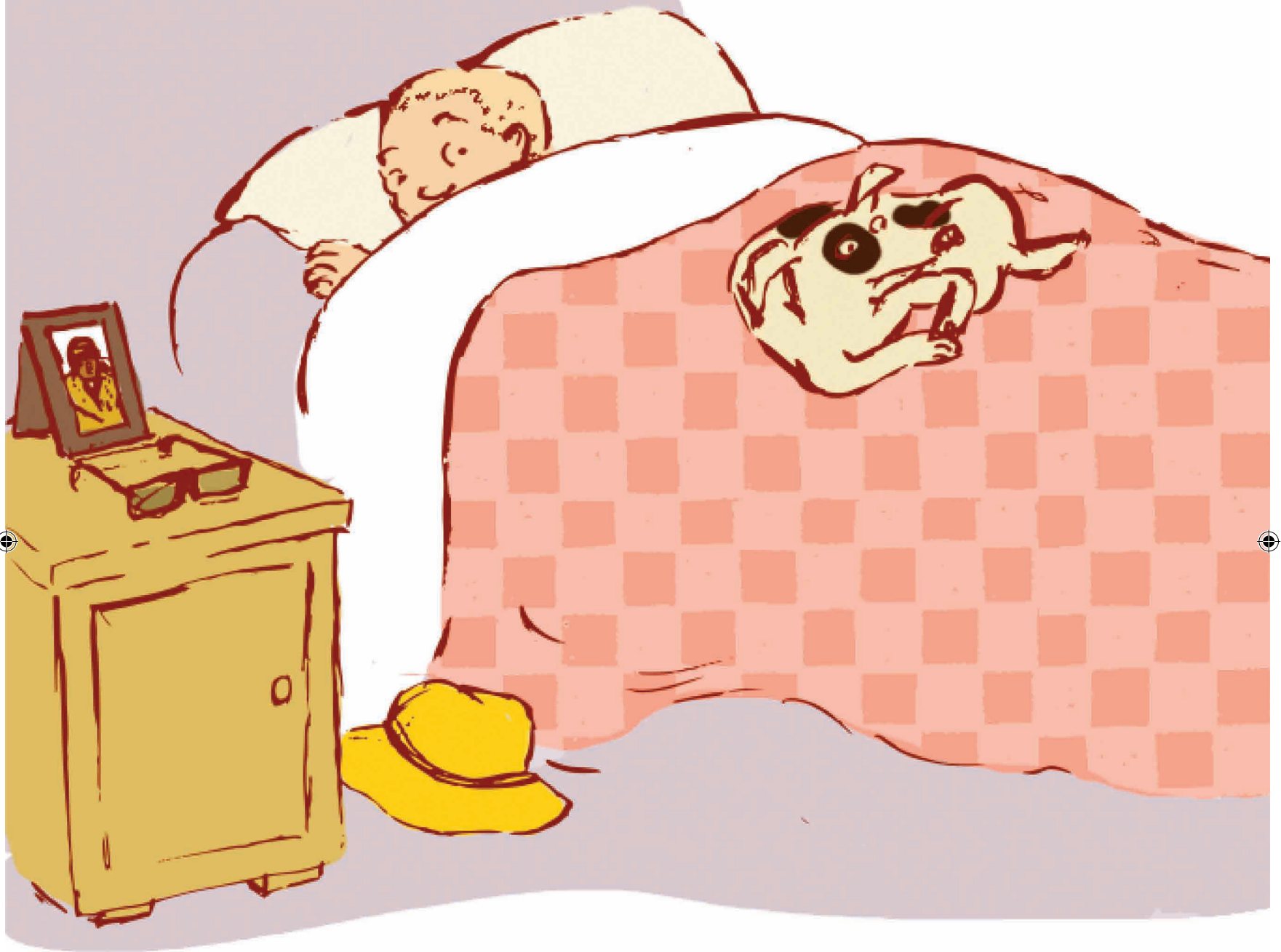


**Gugu vha vula mutshini wavho wa kale wa u
runga. A vha athu u u shumisa lwa
tshifhinga tshilapfu fhedzi nala dzavho dzo
dowela u runga, vha tshi shandukisa
zwiambaro zwa gugu vha mukalaha...**

**Muṭaṭisano ndi wa matshelo,
gugu vha runga vhusiku hoṭhe.**





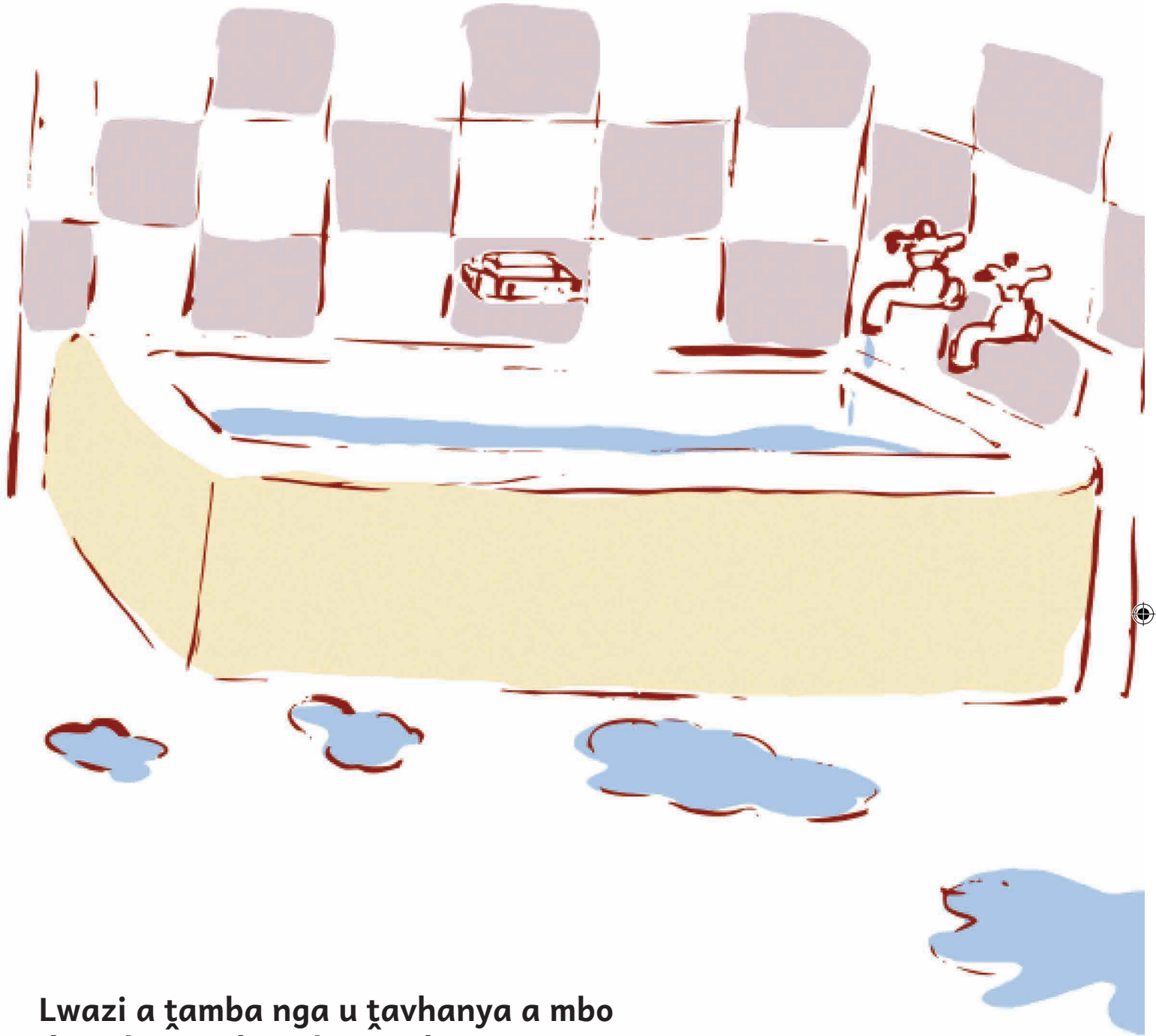




Nga ḍuvha la muṭaṭisano, Lwazi o edela mmbeteni a tshi
khou gungula. “A thi khou ya,” u amba e eṭhe.
“A thi na tsha u ambara.”

Gugu vha mu sumbedza tshiambaro. Lwazi ha khou
kholwa, u vhona tsho tou kwa, tshi tshi mu lingana!





**Lwazi a tamba nga u t'avhanya a mbo
di ambara tshiambaro tshawe.**





Tsha tou mu lingana kwa!





**Tshiambaro tshawe tsha penya sa naledzi
swiswini.**

A wina khaphu. Gugu vha takala nae!







Room to Read South Africa
1209 Francis Baard Street, The Gables, 1 Floor, Hatfield, Pretoria 0028,
South Africa
www.roomtoread.org

Nga 2018, thandela ya REACH yo thusa Room to Read na khamphani dza u gandisa bugu kha u bveledza bugu dza 20 ntswa nga nyambo dza Afurika Tshipembe. Inwe ya bugu dzenedzi vha nayo zwandani zwavho! Inwe na inwe ya bugu idzi yo nwalwa nga Sepedi, siSwati, Xitsonga, Tshivenda na isiZulu. Bugu dzothe dza 20 dzi hone kha nyambo idzo na kha English. U wana zwinzhi kha vha dalele onedayonebook.org.

Phuthumennde

The Suitcase

Muḽalutshedzeli ndi Dorothy Mukhese

Room to Read GSD ID: ZA-ABP-18-0099

ISBN: 978-1-928441-63-2

Bugu iyi yo ranga u gandiswa nga Indwa Publishers.

Heyi bugu yo thoma i kha isiZulu yo nwalwa nga Mbongeni Nzimande.

Muoli ndi Elizabeth Pulles na Julie Downing

Mudzudzanyi ndi Leona Ingram, Riaan Coetzee na Karma Bosman

Yo ṭolwa nga Katherine Hofmeyr

nga thusedzo ya vha One Day One Book vho shelaho mulenzhe ngei Johannesburg nga la 9 Fulwi 2018

Arali vha tshi ṭodou renga bugu nnzhi dza bugu ino, kha vha kwame vhagandisi.

Indwa Publishers

Meredale, Johannesburg South, 2091

Matthew Jabulani Mngadi | 011 942-5389

Heyi thandela yo lambudzwa nga tshikwama tsha masheleni a Education for All Children (REACH) tshi re kha World Bank na vha Global Book Alliance khathihi na thusedzo i bvaho kha vha Muhasho wa Pfunzo dza Fhasi (Department of Basic Education).



Khophiraithi kana vhone ha idzi bugu vhu zwandani zwa vhabveledzi vho bveledzaho tshipida tshinwe na tshinwe tshadzo. Vho nanga uri dzi langiwe fhasi ha tshitenwa tsha thanziela i no pfi Creative Commons Attribution 4.0. Zwine zwa amba uri bugu yothe, i wela kha thanziela yeneyo nthihi. Izwi zwi amba uri muñwe na muñwe a nga si thivhelwe u vhalala, u daunulouda, u ṭalutshedzela, u gandisa na u i phadaladza bugu iyi. Arali vha tshi ṭodou shumisa tshipida tshinwe na tshinwe tsha iyi bugu, vha tea u bula madzina a vhabveledzi vhayo.

