



Cristopher Alexi Barrientos Aguilar

ADÍBUHATU

Alejandra María Villatoro

AGARABAHEI

Xiomara M. Cacho, César Vargas Sabio

Panchu, aba megu
sarafangei.





Garensereiti; dábula,
halou, luma tubara
garüdia.



Sagü binafi
latatiruni liweyuri.



4

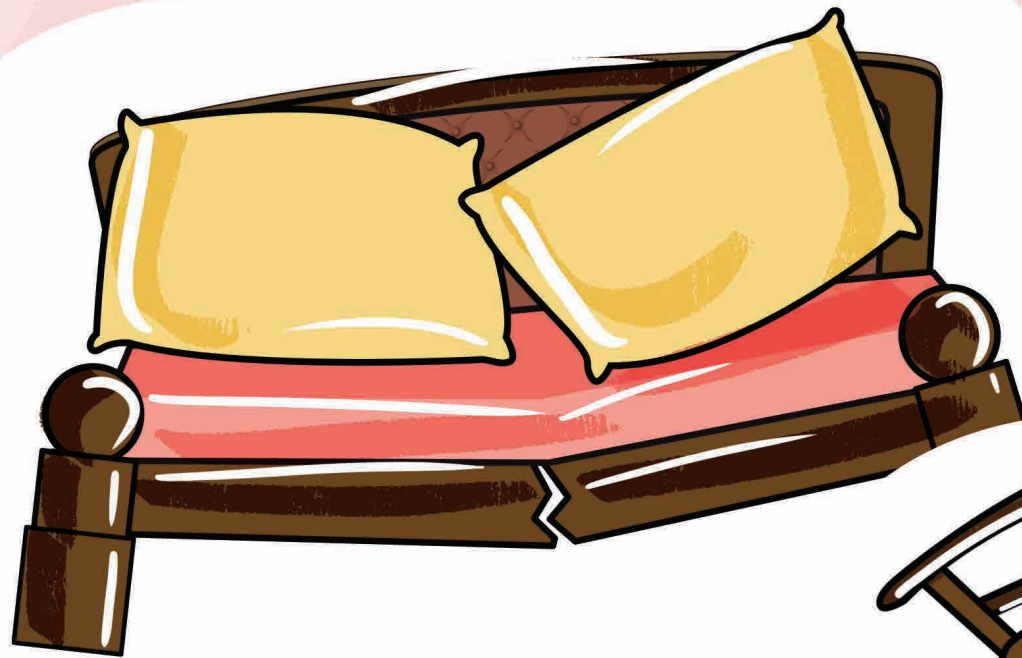




**Afurideina
lubiagian lau bandi igundani.**

Uguñe, Doris lumada to bagasu taguwahaña lun.





**Ladüga halagua
tan tala tabu tubari.**



7





**Aranseha lumuti
Panchu deregalei tun
lau suntaruma lanigi.**

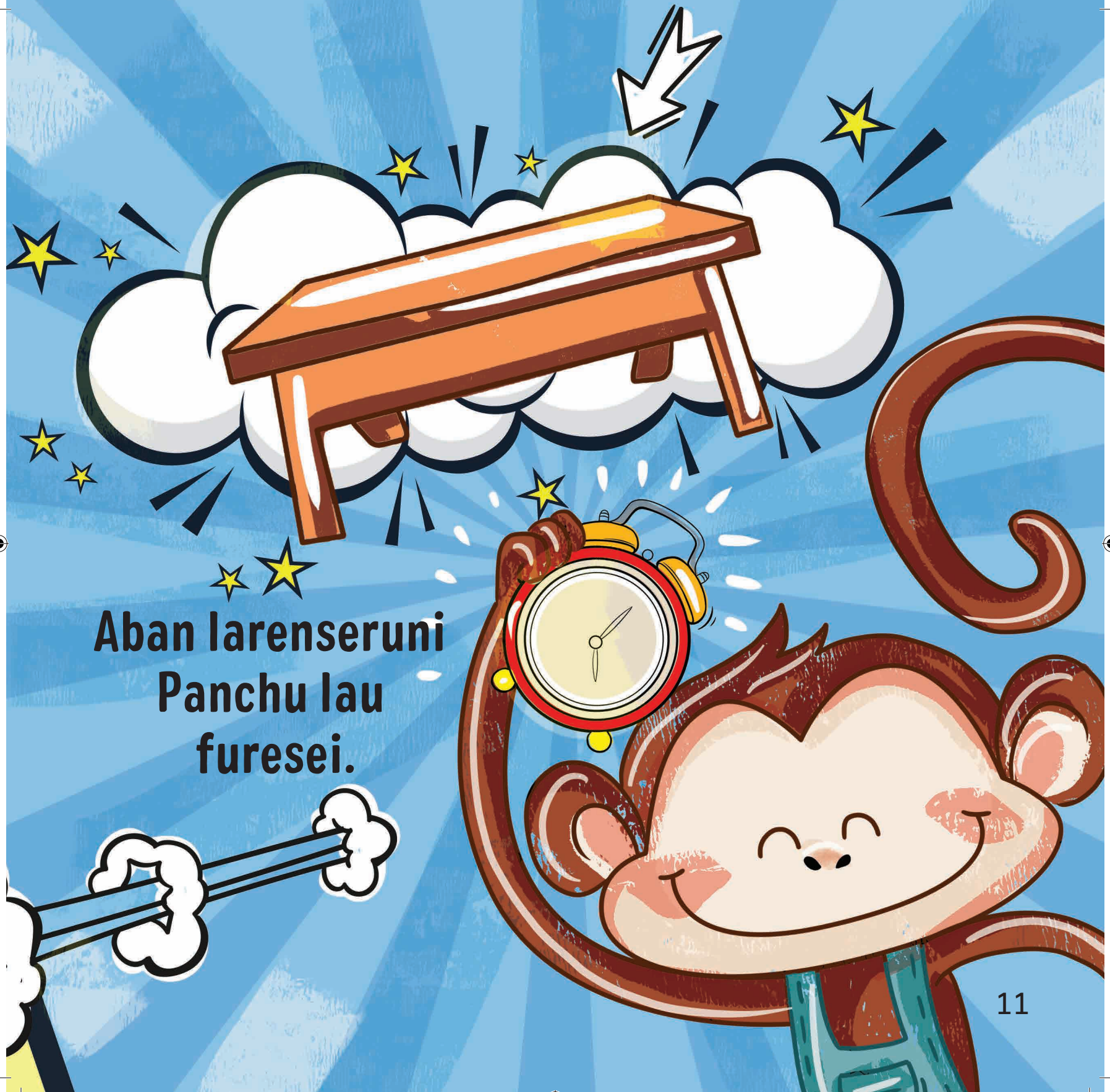




Huwa, aba lumada giriti Feduru,
aba giñe laguarun lun ladüga
halaguála didabula Susana to
lóubafurugu



10



**Aban lareneruni
Panchu lau
furesei.**



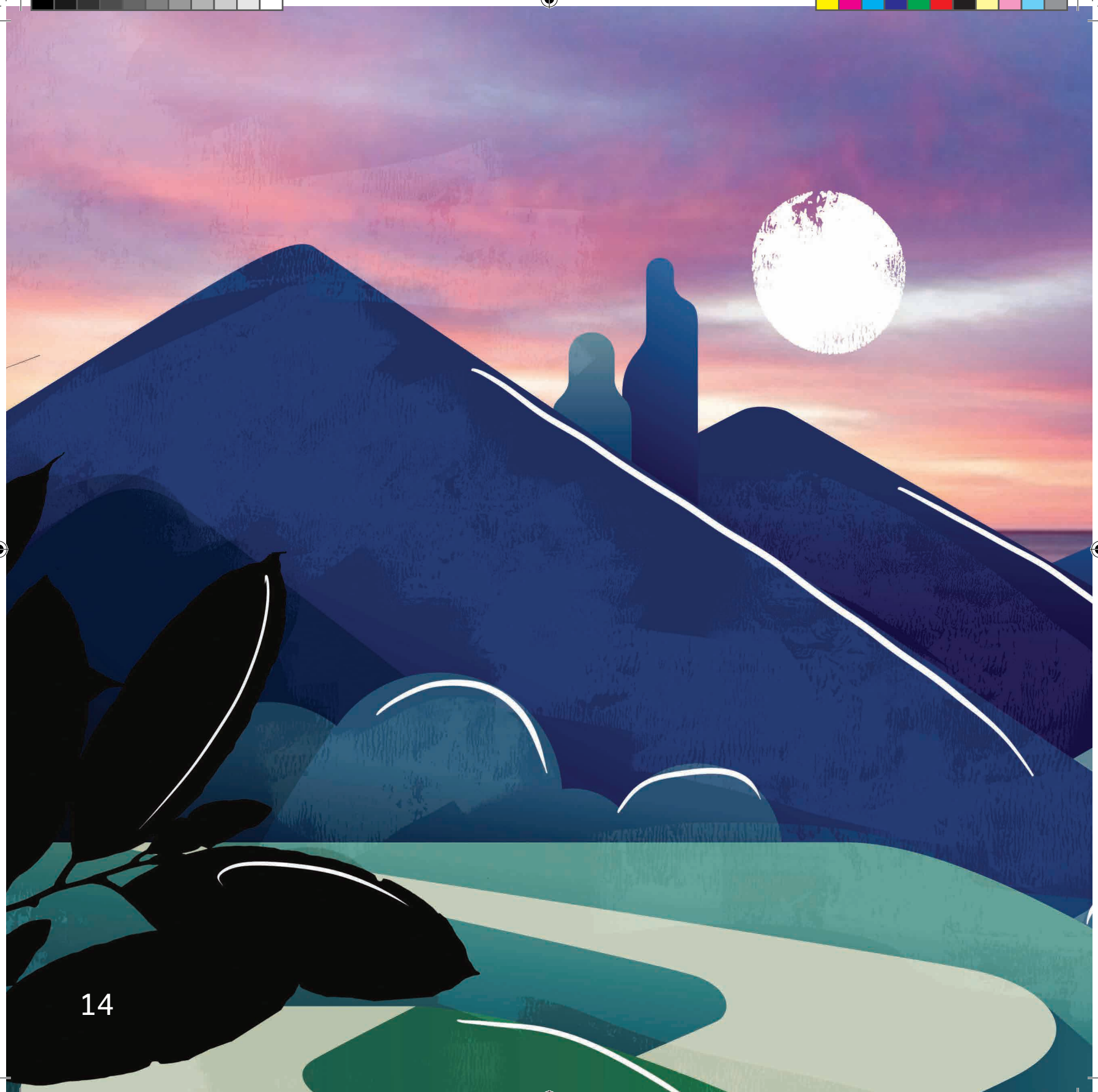
**Láu igundani
lichiga Feduru
serenei lun
lumada.**

i ragaqias!



Ladüga
mabonguabei
gisau
Uguñe.





Lida lagiribudun Panchu lubion
yagüta arabu.









**Agurabati
lawadugumaridun dari
larugan binafi.**







gabana



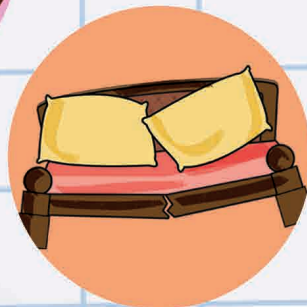
bagasu



dabula



halou



megu