

BOTA NÌ GVÈYN ÌWEYN

Kom



Author: Chuo Kain Godfrey

Illustrations: David Nka

Design: Victoire Samè

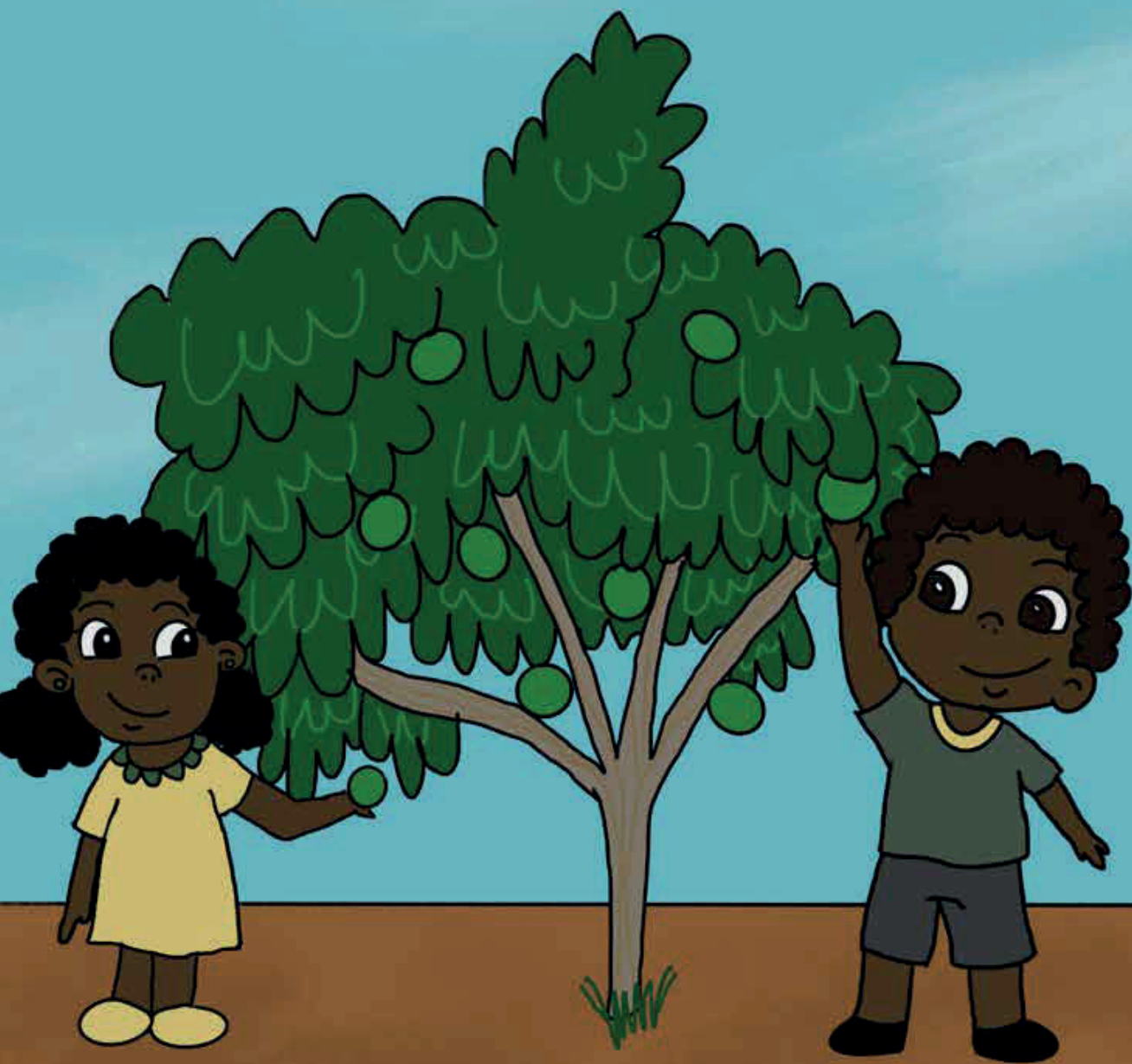
Bota nà n-keli woyn ghì bò.
Àjena nà n-se' ghayn ìfwo a gvêyn.
Bota nà n-keli ìfwo ì to'ni a gvêyn.



Bzyâesi Bota si kola meyn.

Afyef a nin se si chwò bzyâesi chemli.

Si n-chemli-à Tèṅ ṅêyn Mba' bonṭi.



Mìngvìlà m̀ Bota kola meyn.

T̀n̄ n̄ȳn Mba' n̄n ko' mìngvìlà.

Ànena n̄n ko' a ghi k̀e mìngvìlà.



Lamâysi Bota si kola meyn.

Ënkà' m̀ òteyn nin dyebl̀ wì.

T̀n̄ n̄eyn Mba' nin k̀et̀ì
mingv̀l̀à ǹ òwu.



Àjòṅ a Bota kola meyn.

Ènkà' m̀ òtèyn nì dyèbl̀ wì, gha'l̀f̀ wì.

T̀èṅ ṅèyn Mba' nìn kôê kì s̀i iwo i boli.



Asom a Bota kola meyn.

Bota nin ko' ìsom.

Wù n-ko' si gvèl asom kì a kì kòla.



Ibi i Bota i kola meyn.


Yi n-chema gheli bonṭi-à.

Woynda nin bonṭi-à ghi bey'li.



Bòbosi Bota si kola meyn.
Bòbosi ateynsi nin tofa.
Si n-gha'lê jofà, fî fom ichvè.

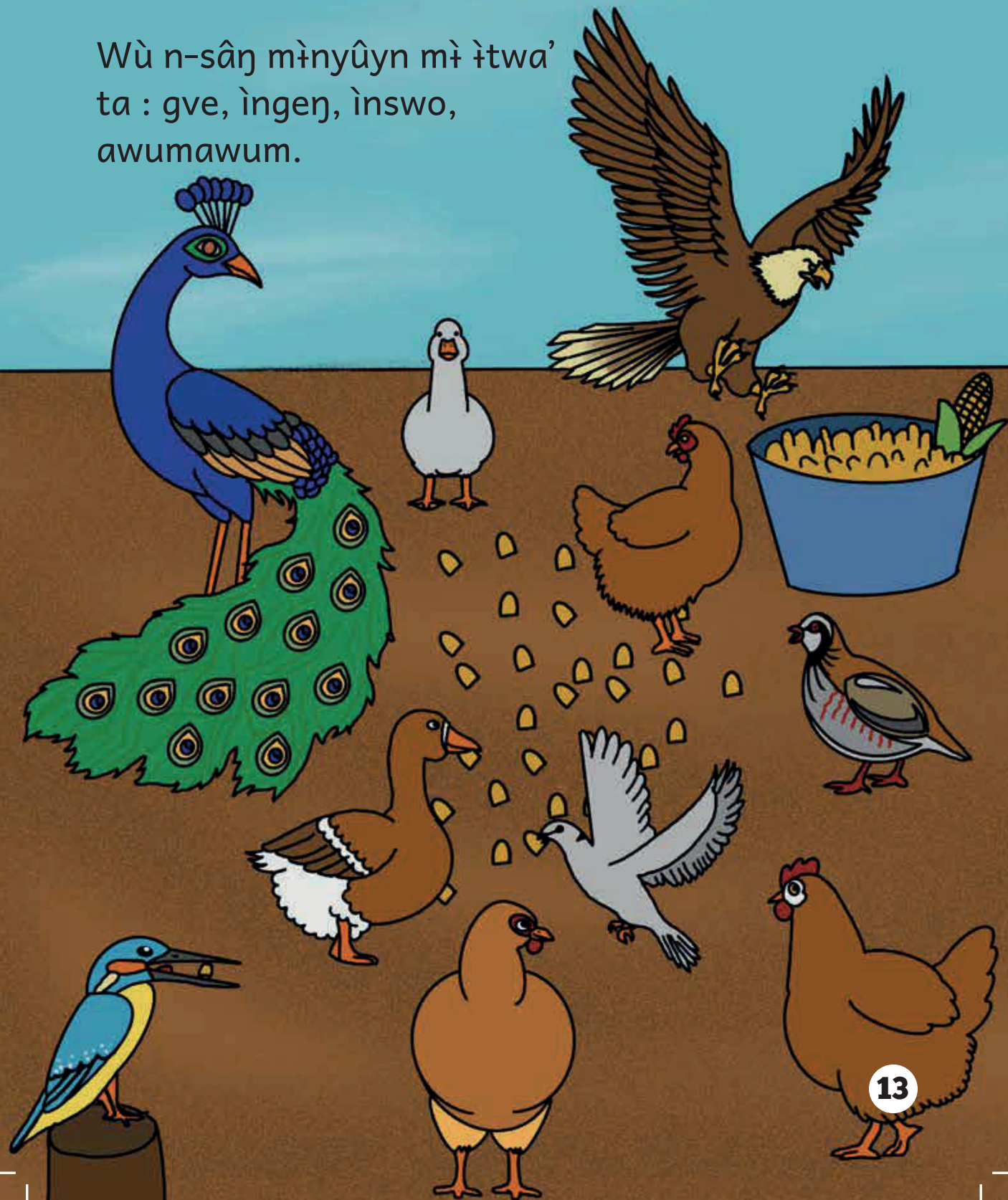




Mìtâm mì Bota kola meyn.
Tèn nêyn Mba' nin kôe mìtam.
Gheli nin yuyn mìtam mì àteyn.

Asaŋ a nɪn ghɪ a gvêyn nɪ Bota. Mɪnyûyn mɪ ndo
nɪn kfɪl àsaŋ ta: ngvɪsɪ, ngvɪsɪ jvâ, mɪlâyɪnɪ mɪ ndo.

Wù n-sâŋ mɪnyûyn mɪ ìtwa'
ta : gve, ìngen, ìnswo,
awumawum.



Bota nin yiŝ nyamsi ndo
ta: bzi, bi, nyâmbòlo', nkfi nyàm
Wù n-sâŋ nyamsi itwa' ta:
Kayn, fibu', ngè, fichue.

