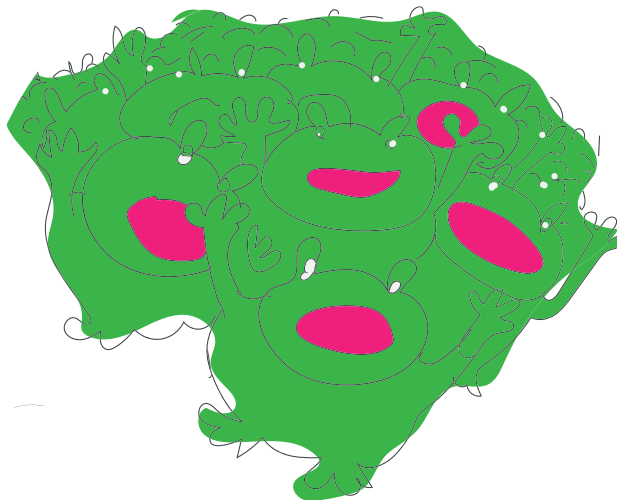


Besua ba Njou na Mukonge

Duálá

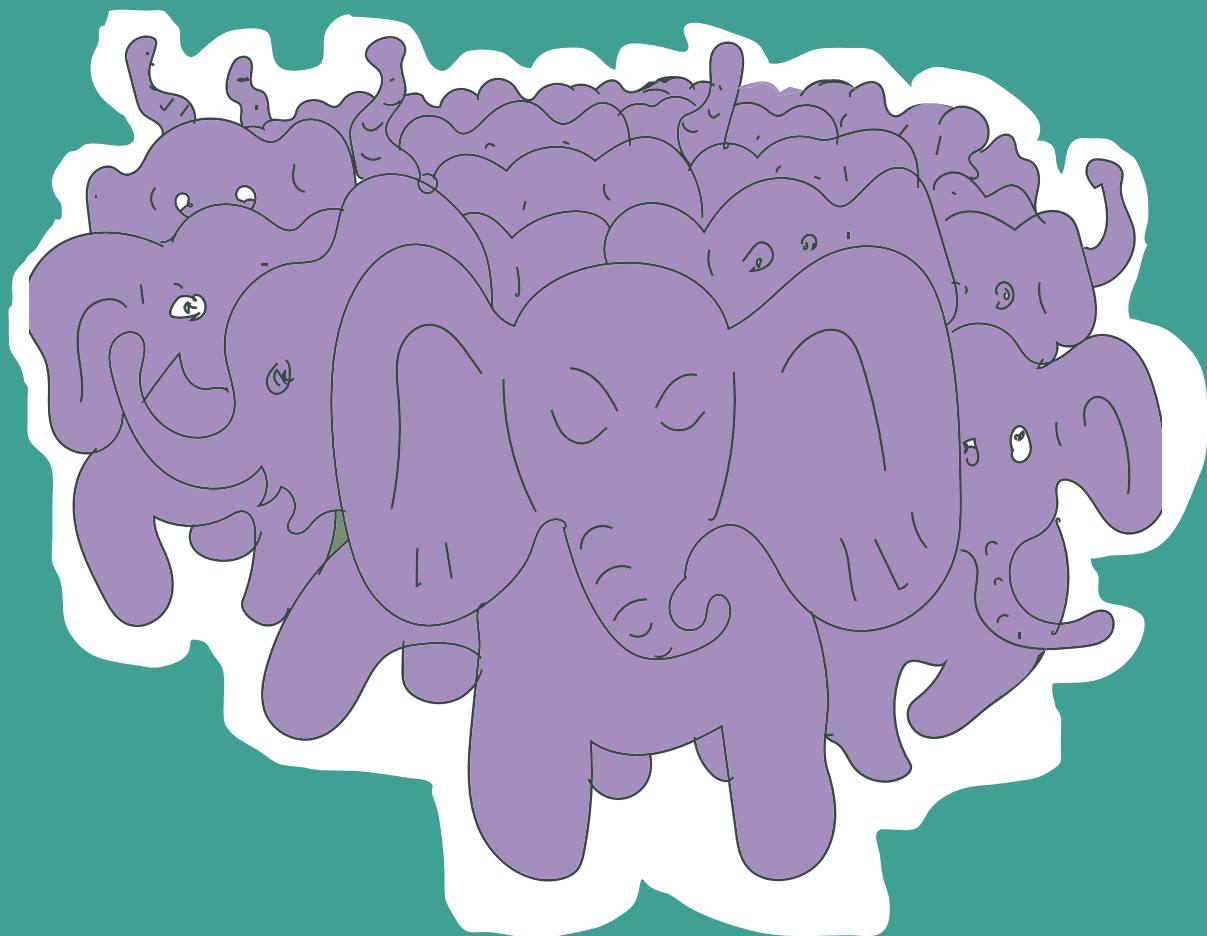


Auteur : Agnès Enjome Muanjo Mududu

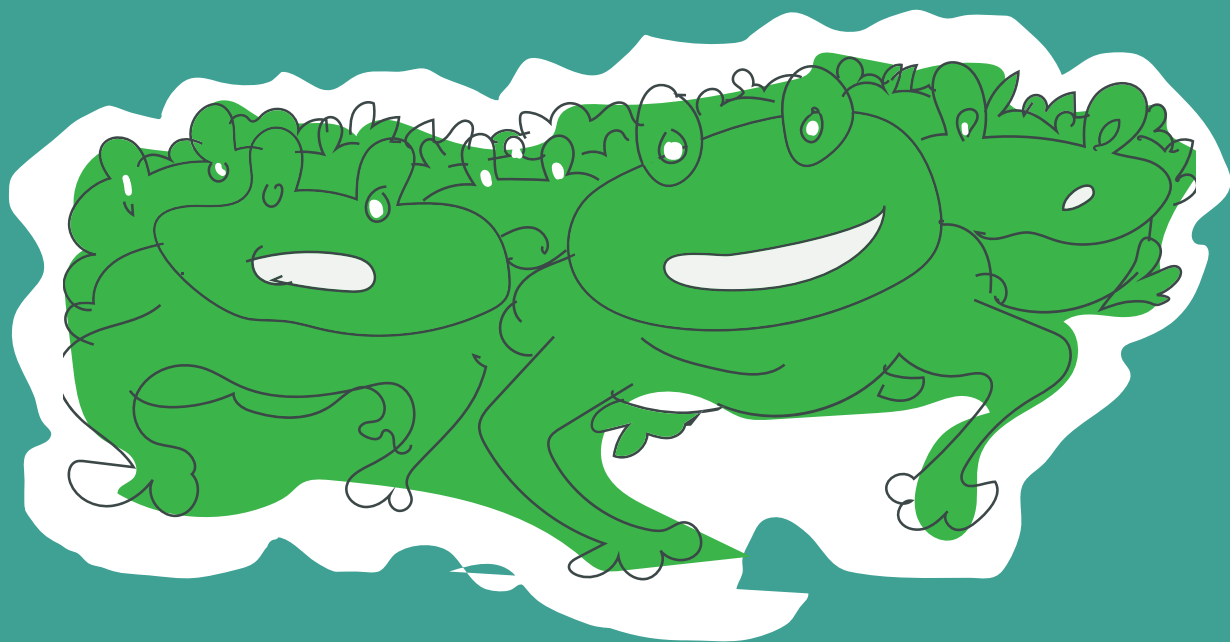
Illustrations : Maureen Etondi

Traduction : Soppi Ebondji Louise

Besua be ta o boko a Njou a ñama buña bō.
Bonañama bese su diwo, Bonamikoŋge pe labu su.
Njou a busino o boko, na mukoŋge mo pe mu busa,
mu leke mo.



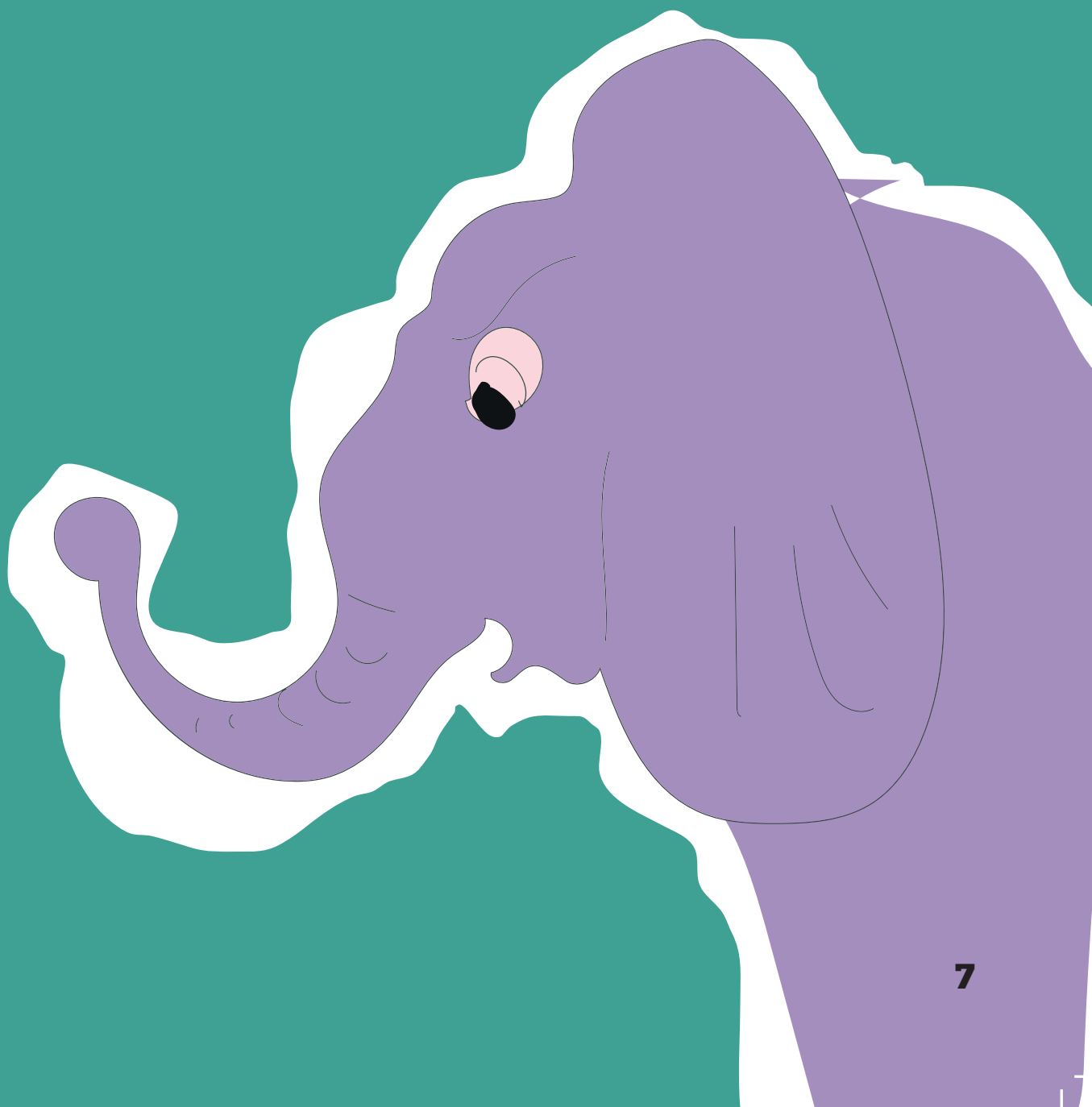
O bia na ba maya o nungame o jana besua,
Njou a sele yaña yi son a mukonđe, a yoye pe
Bonamikonđe bese.



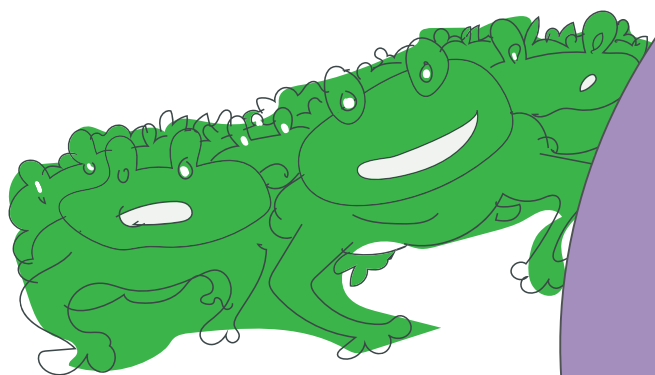
Biala ba mukonge be ta nde ná :
« Na si ma bwa wa bongo tom !
Ya nde won, jane ».



Ba lataneno so na mu mukoŋge mu kwalane Njou na a benge nungame, ebanja asam jita, bwambwam momene a ñume nde mabongo wase, nde ba wele jana bwam.



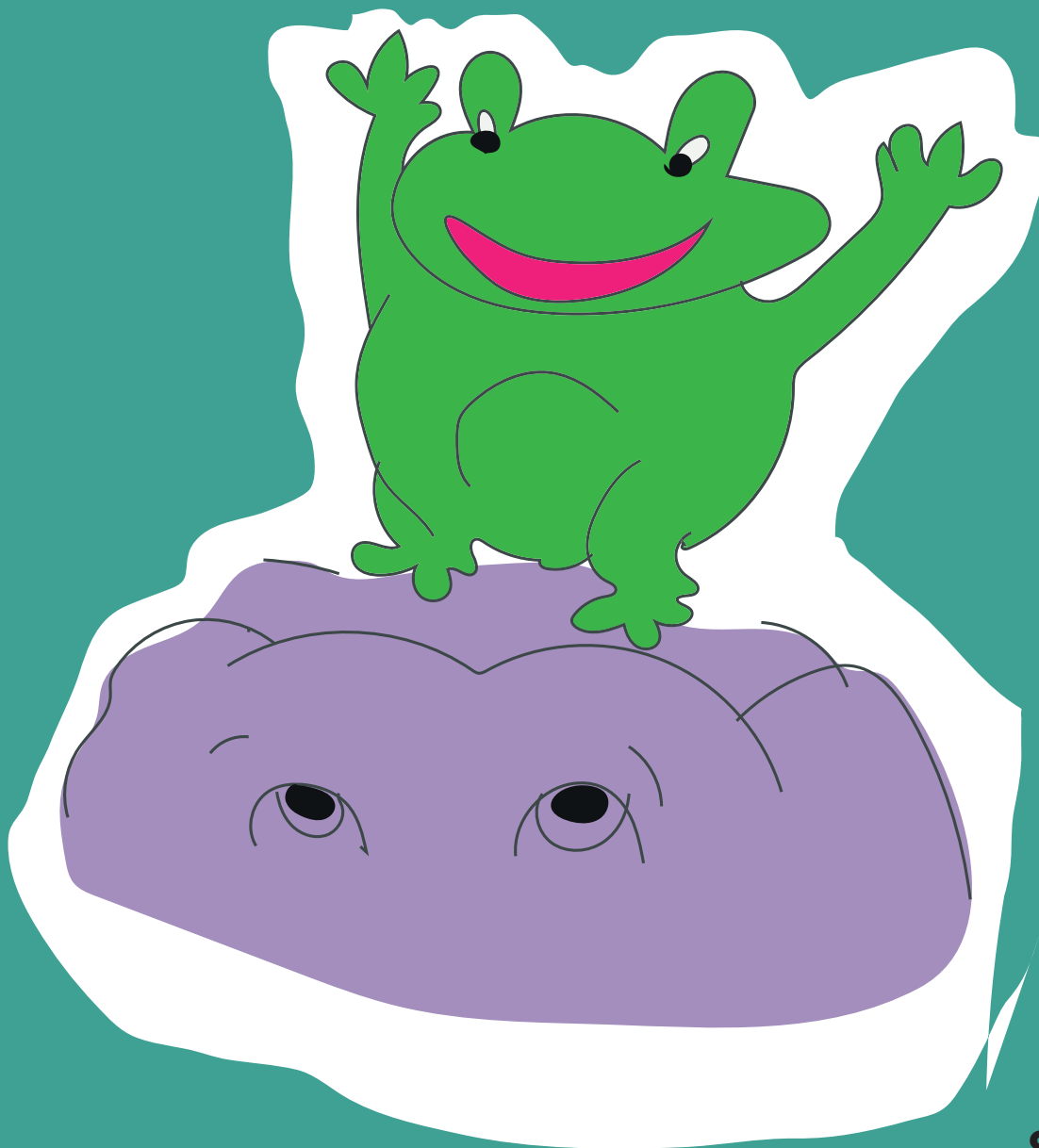
Njou a ñumno mabongo owase na mu mukoŋge
mwaŋgwe, mu jea mo la makata na ben byala ná :
« A Njou a ñama, O e wase ».



Na Bonamikoŋge ba kumwa tomba esimo, ba kwala ná

:

« Wo i ! wo i !; Njou a ñama a kwedi ».



Ba si emedi pe sengane Bonañama to eyala, ba kumo
nde kwala ná :

« Besua be boi, ebanja ngum'añu e kwedi, o nika di buki
biño ».

