



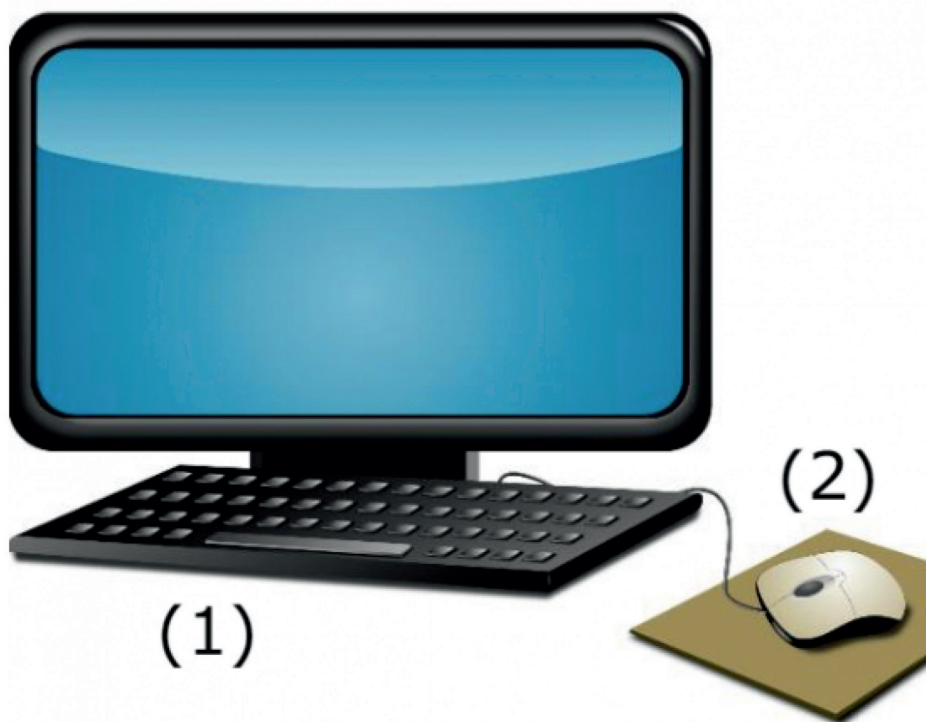
Khomphyutha dzi shumisa mafhungo ane a vhidzwa datha.

Datha i nga vha maļeļere, dziņomboro, zwifanyiso, na mibvumo.



Musi ni tshi dzhenisa mafhungo kha khomphyutha, ni vha ni tshi khou dzhenisa datha.

U thaipha kha khiibodo ya khomphyutha ndi inwe nḽila ya u dzhenisa datha.



U itela u dzhenisa datha kha khomphyutha, ri shumisa:

khiibodo (1)

mausu (2)



Musi ri tshi dzhenisa datha nga nqila ya mubvumo na zwifanyiso, ri shumisa:

khudzaipfi (3)

khamera (4)



Ri dovha ra wana datha u bva kha khomphyutha.

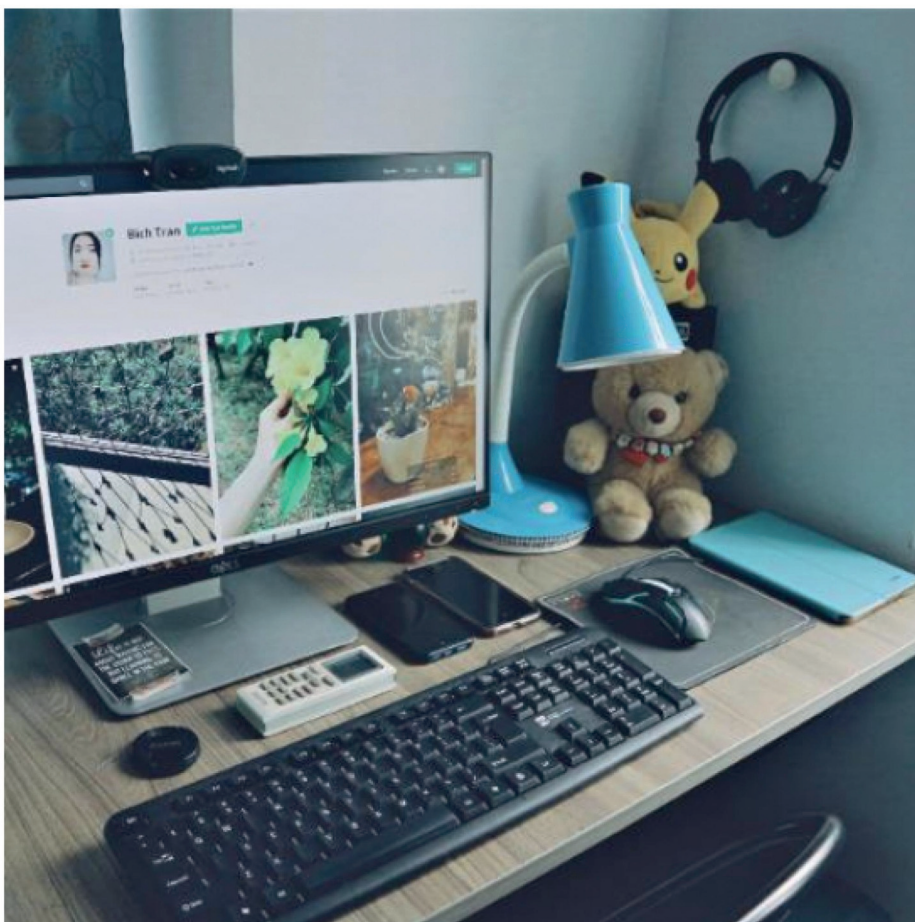
Datha ine ra i wana kha khomphyutha i vhidzwa 'output' (tshibveledzwa).

Tshipikara (5) na tshikirini (6) zwi bveledza 'output'.



Tshikirini (6) tshi bveledza zwifanyiso, maḽeḽere, na dziḽomboro.

Zwipikara, na dzi 'earphone' (7) zwi bveledza mibvumo.



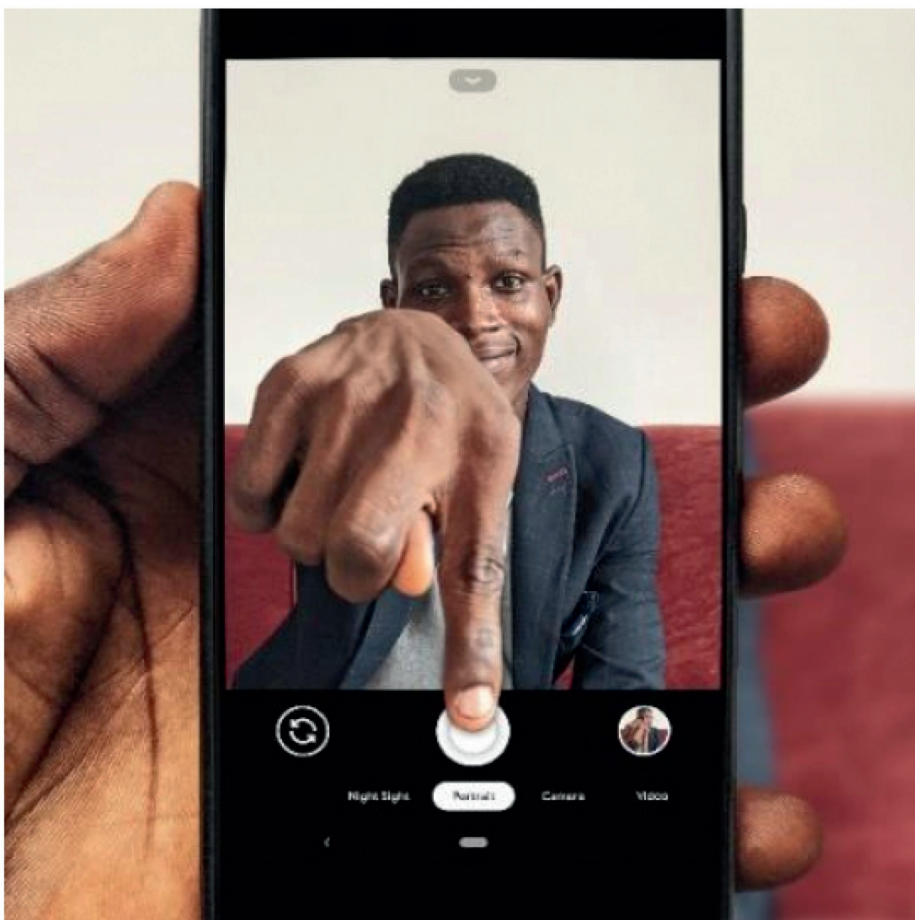
'Hardware' ndi zwiṗiḡa zwa khomphyutha; zwine na kona u zwi fara.

Tshikirini, khiibodo, zwipikara, mausu, khudzaipfi, na dzihedifouni zwoṗhe ndi 'hardware'.



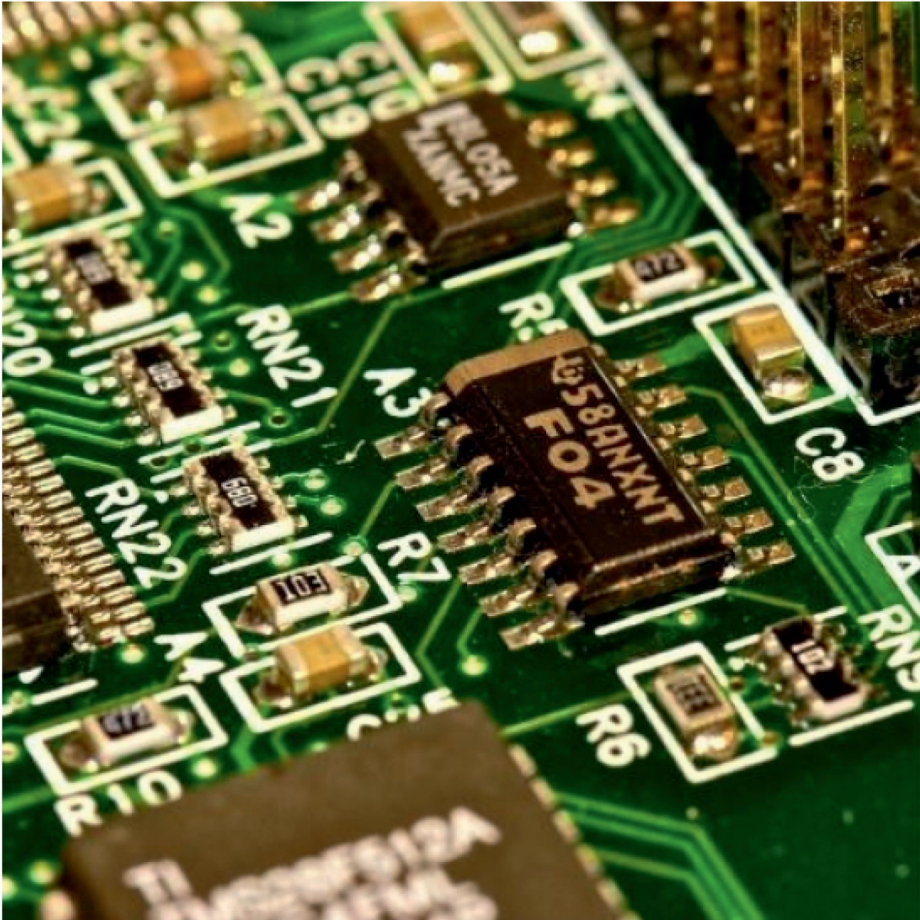
U itela uri khomphyutha i shume, i țođa 'software'.

'Software' i fha khomphyutha ndaela ya nđila ya u shumisa datha yo fhambafhambanaho.



Dziphurogireme na dzi *application* ndi miñwe mifuda ya *'software'*.

Sa tsumbo, ni fanela u vha na *'application'* ya khamera i re kha simathifouni u ri ni kone u foda zwinepe na dzividio.



Musi ni tshi sedza nga ngomu ha khomphyutha, ni ɔo vhona zwipida zwinzhi zwiṱukuṱuku zwine zwa ḍihwa sa 'chip' dza khomphyutha.

'Chip' dza khomphyutha dzi ita u ri khomphyutha i shume.



—Mbudziso

1. Mafhungo a re kha khomphyutha a vhidzwa mini?
2. Khiibodo na mausu ndi tsumbo dza ...
3. Datha ine ya bva kha khomphyutha i vhidzwa mini?
4. Neani tsumbo mbili dza hardware.
5. Software ndi mini?



Heyi bugu ndi ya vhuvhili kha mutevhe wa bugu
nna dzi ambaho nga thero ya thekinolodzhi ya
khomphyutha.

Bugu ya tshitori yo sikwa na u nwalwa sa tshipiḽa
tsha thandela ya matheriaḽa ya u vhala ya
ZenexUlwaziLwethu ya 2021.