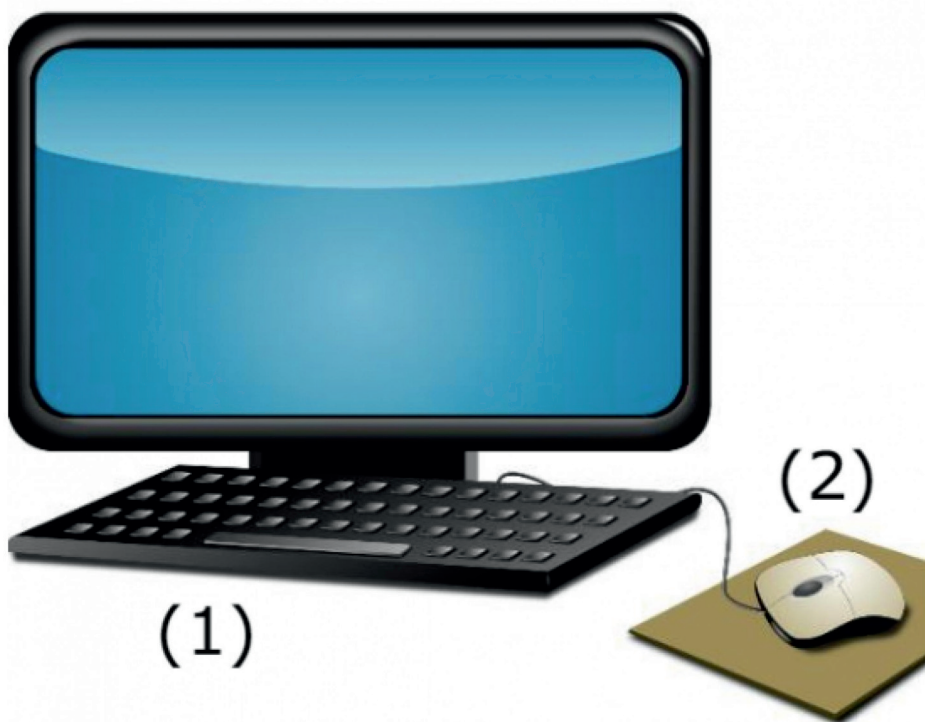




Amakhomphyutha asebenza ngelwazi elibizwa ngokuthiwa yidatha.

Idatha ingaba ngeendlela zamaledere, iinomboro, iinthombe kanye namatjhada.



Sisebenzisa amathulusi la ukubeka idatha kukhomphyutha:

Ikhithodi (1)

Imawusi (2)



Sisebenzisa amathulusi la ukubeka idatha ngaphakathi ngokwendlela yetjhada kanye neenthombe:

imayikhrofowunu (3)

ikhemera (4)



Siyayithola godu idatha nakukhomphyutha.

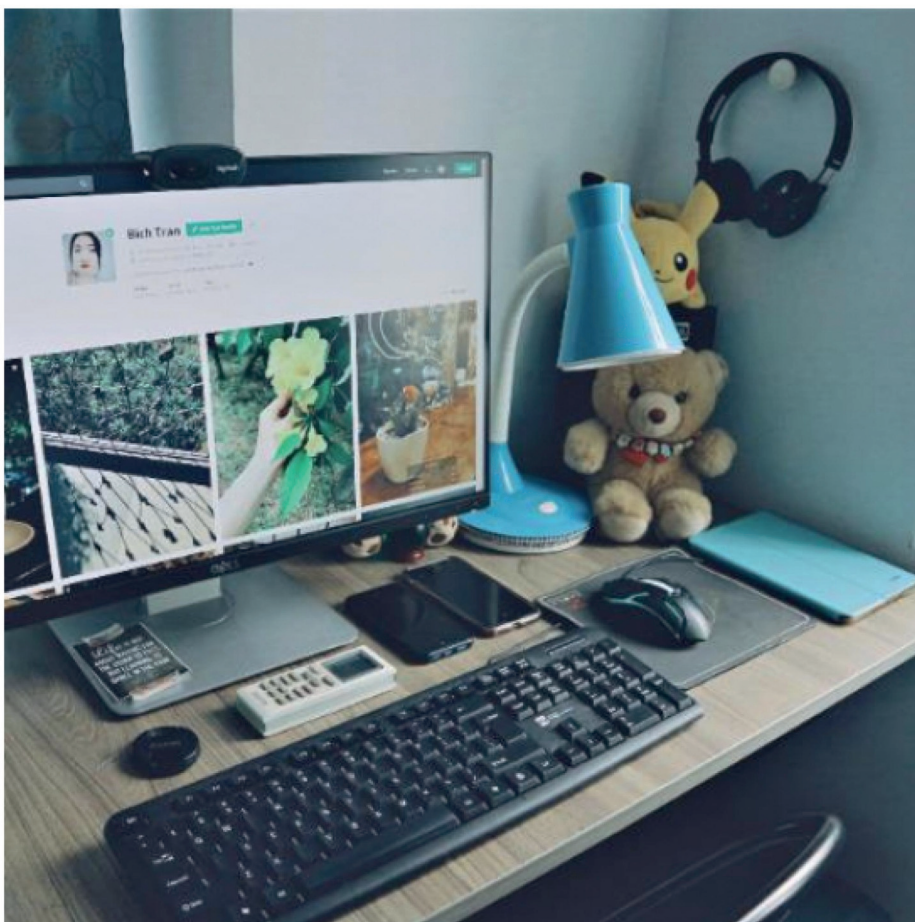
Idatha esiyithola kukhomphyutha ibizwa ngokuthiwa mkhiqizo.

Isipikara (5) kanye nesikrini (6) zisinikela umkhiqizo.



Isikrini (6) sinikela umkhiqizo eenthombeni, kumaledere kanye neenomborweni.

Iimpikara nezinto ezifakwa eendlebeni (7) zinikela umkhiqizo njengamatjhada.



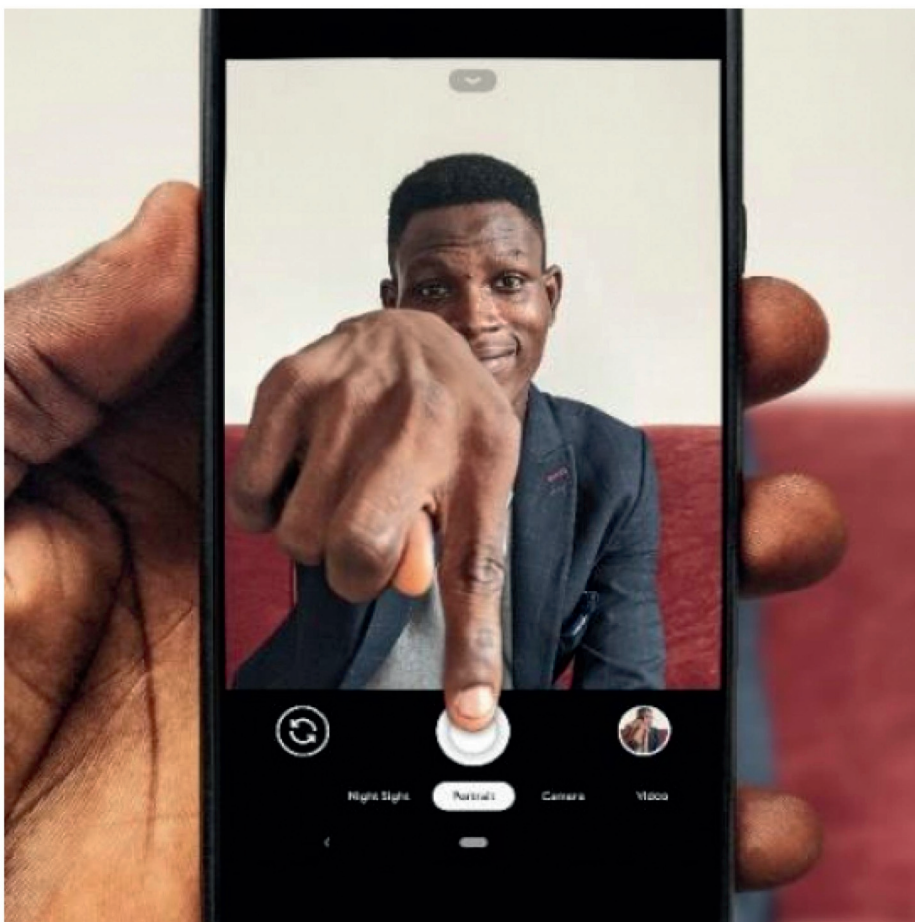
Ingceny ezakhi zekhomphyutha kuziingceny ezibonakalako zekhomphyutha; iingceny ongazithinta.

Isikrini, ikhibhodi, iimpikara, imawusi, imayikhrofowunu kanye namahedfowunu koke lokhu kuziingceny zezakhi zekhomphyutha.



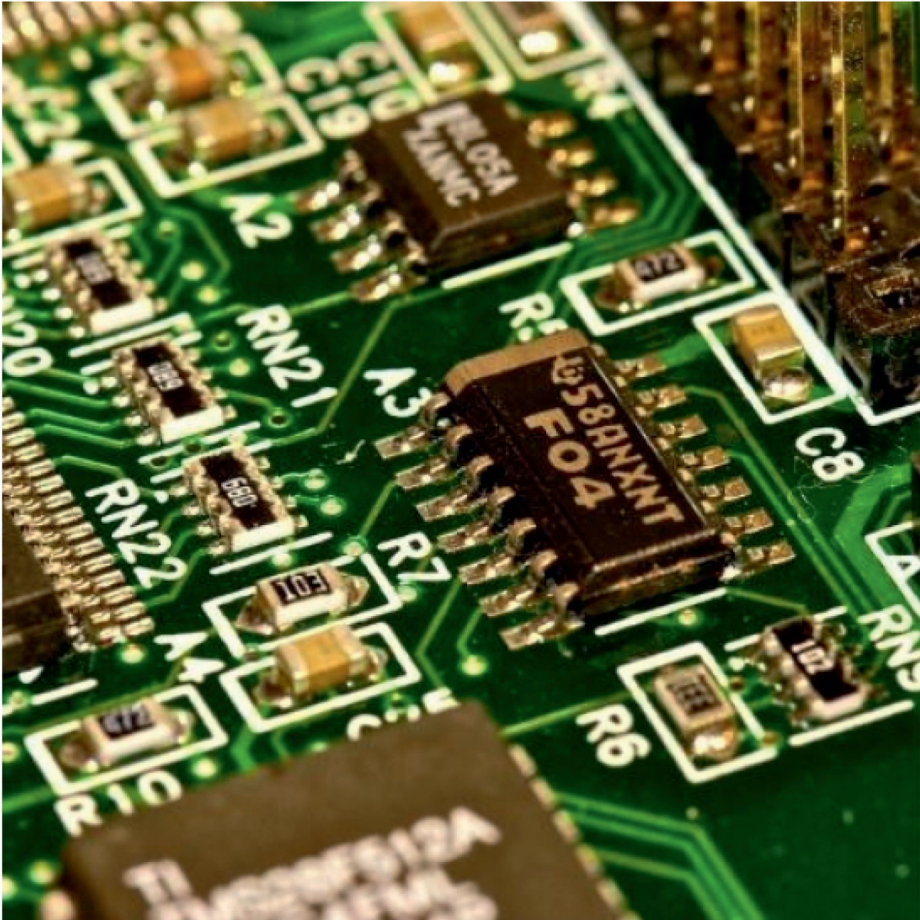
Ikhomphyutha ifuna ihlelo lokusebenza ukuze sikghone ukuyisebenzisa.

Ihlelo lokusebenza linikela imilayo kukhomphyutha emayelana nokuthi usebenze njani namadatha ahlukeneko.



Amahlelo kanye neenkghonakalisohlelo zibumba ingcenyehlelo lokusebenza.

Ukwenza isibonelo, utlhoga isikghonakalisihlelo sekhemera kusimathifowunu ukobana uthathe iinthombe namavidiyo.



Nawuqala ngaphakathi kwekhomphyutha, uzakubona iingcenyane ezincazana ezibizwa ngokuthiwa matjhiphu wekhomphyutha.

Amatjhiphu wekhomphyutha akhambisa ilwazi ukwenza bona ikhomphyutha isebenze.



—Imibuzo

1. Ulibizani ilwazi elikukhomphyutha?
2. Ikhithodi nemawusi ziinsetjenziswa begodu ziimbonelo za...
3. Siyibizani idatha esiyithola kukhomphyutha?
4. Nikela iimbonelo ezimbili zeengcenywe zezakhi zekhomphyutha.
5. Liyini ihlelo lokusebenza?



Incwadi le ingeyesibili yeencwadi ezine ezililungelunge ezethula iinhloko zethekhnoloji yekhomphyutha.

Incwajana yendatjana le yenzelwe iprojekthi yamamatheriyali wokufunda we-Zenex Ulwazi Lwethu ngomnyaka we-2021.