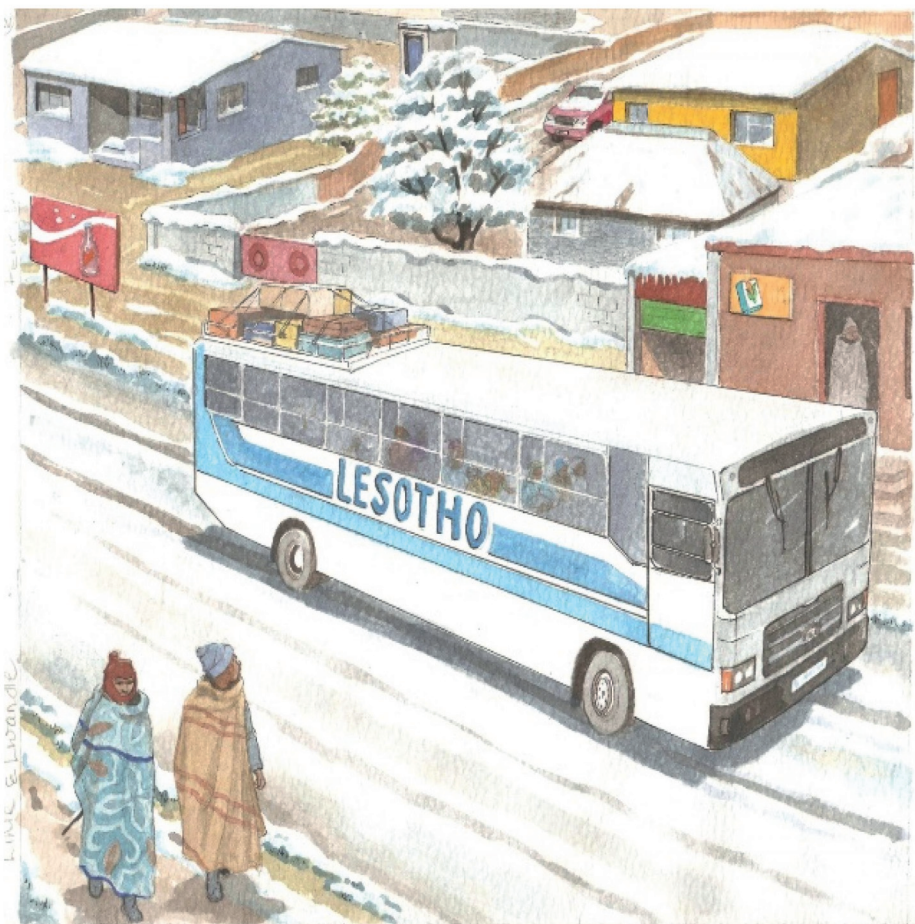




Lihle and Lwandle are travelling by bus to visit their uncle in Lesotho.

It's their first trip to the small country high in the mountains.



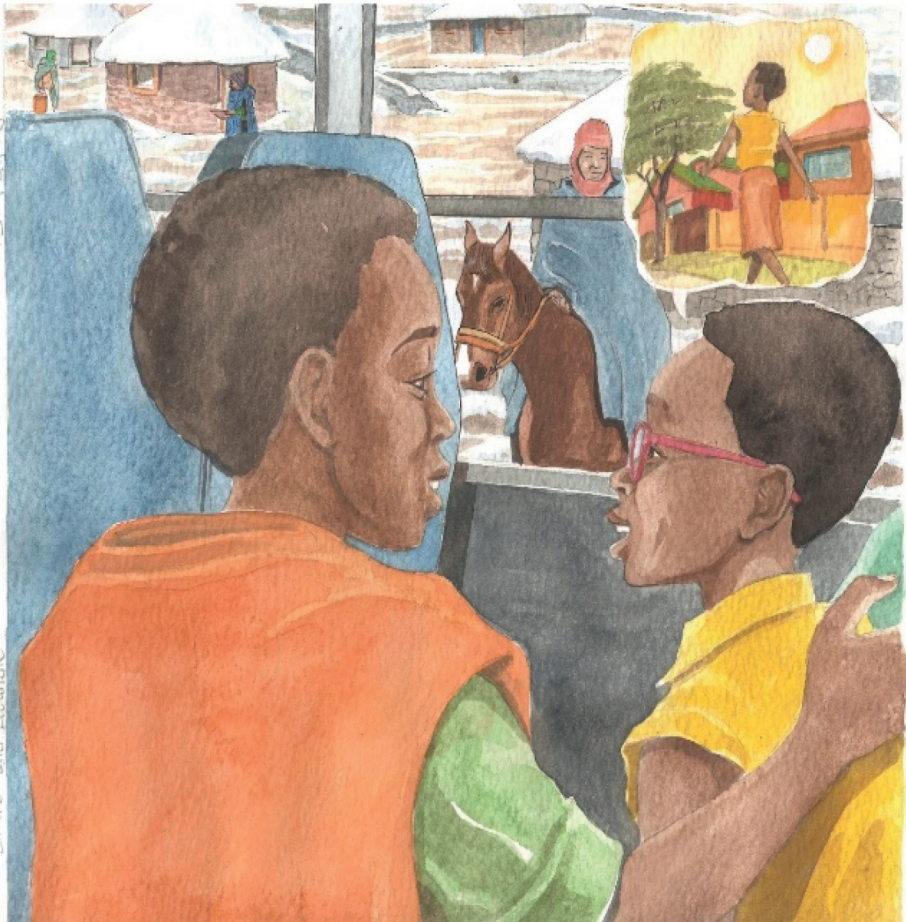
“There’s snow everywhere!” gushes Lwandle.

“It’s like a thick white blanket covering everything,” agrees Lihle.



"I'm glad this bus is heated!" exclaims Lwandle.

"Yes, it will be chilly outside. Winter temperatures here drop below freezing," says Lihle.



“Winter temperatures in Lesotho are much colder than at home in Limpopo,” continues Lihle.

“Brrr, I hope I packed enough warm clothes,” says Lwandle.



The bus arrives and the siblings wave to their uncle. He's wearing a big coat, scarf, and hat.

"Ee-ee!" shivers Lwandle as she steps outside.



Uncle has brought beautiful warm blankets for Lihle and Lwandle.

“Welcome to winter!” he greets them.



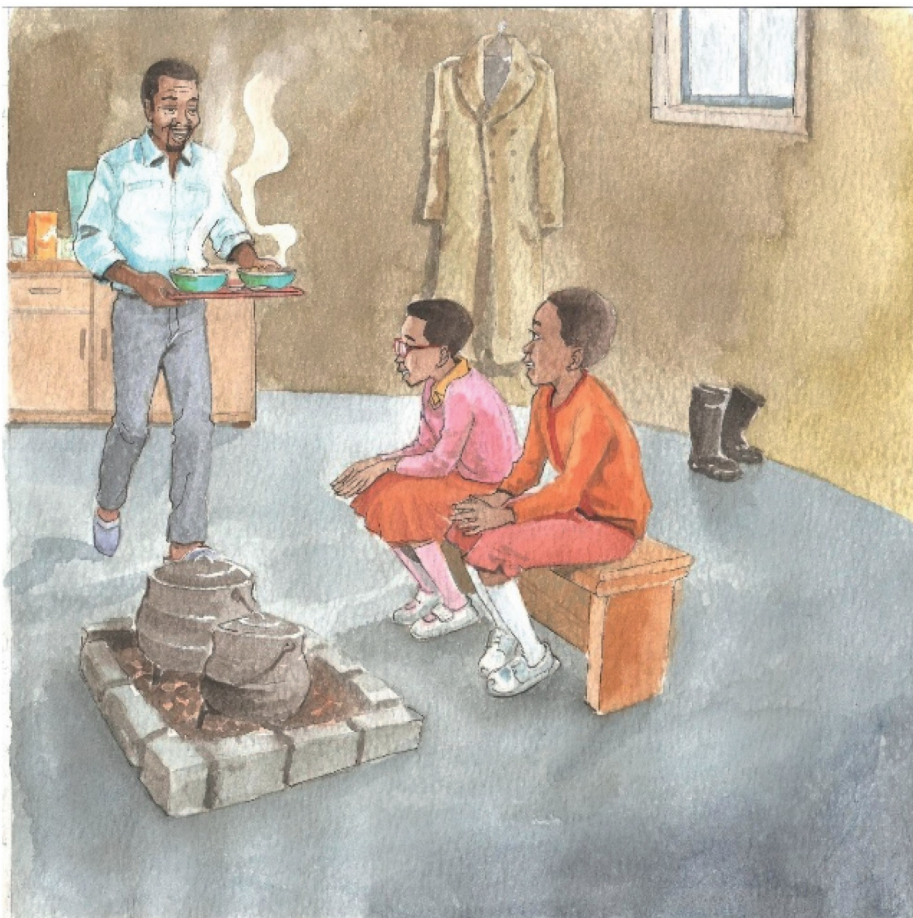
“Careful where you walk, the ground is icy and slippery,” warns Uncle.

They pass a group of woolly sheep huddled together for warmth.



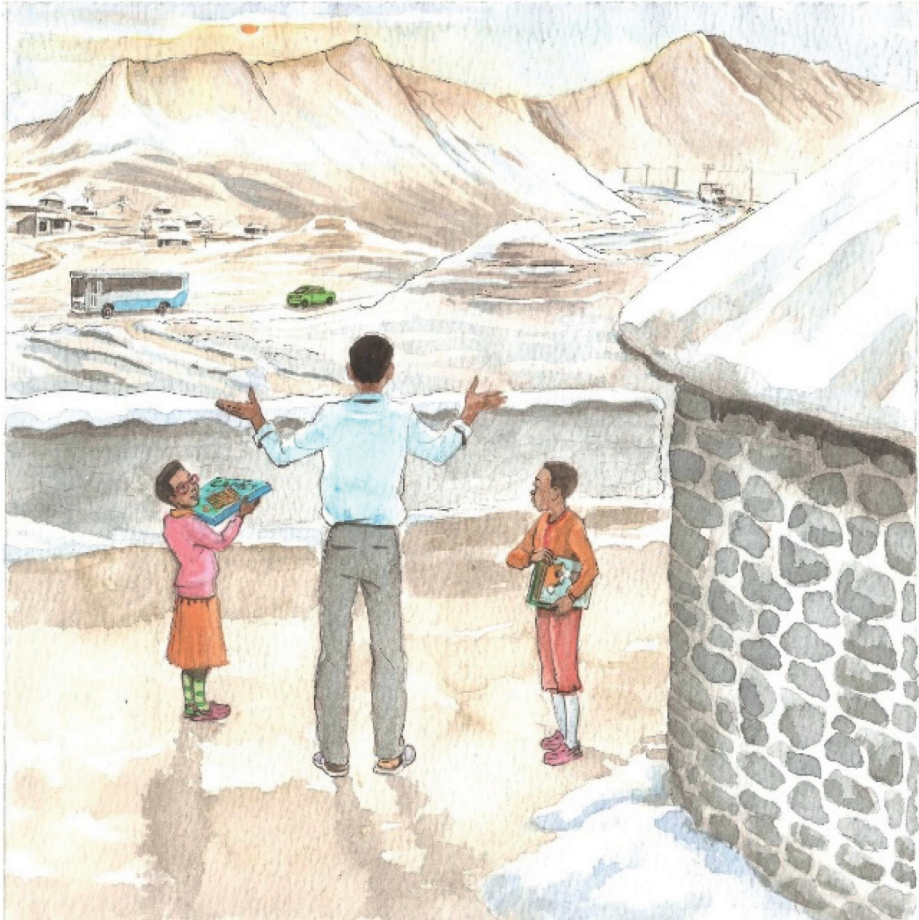
Below the snow, grasses are dry and brown. There isn't much grass for animals to graze on.

Many plants stop growing or die during winter.



Lihle and Lwandle sit by the fire in their uncle's hut.

He gives them steaming beef and potatoes, saying, "This traditional lekotloane will warm you."



“In winter, sunrise is late and sunset is early. We’ll be inside for hours,” says Uncle.

“We came prepared with books and games!” chorus Lihle and Lwandle.



—Questions

1. Where are Lihle and Lwandle? Find the place on a map.
2. What season is it?
3. Find 3 words describing this season.
4. List 4 winter clothes.
5. Is Lesotho's winter the same as winter where you live? Explain.
6. Which winter do you like most? Why?