

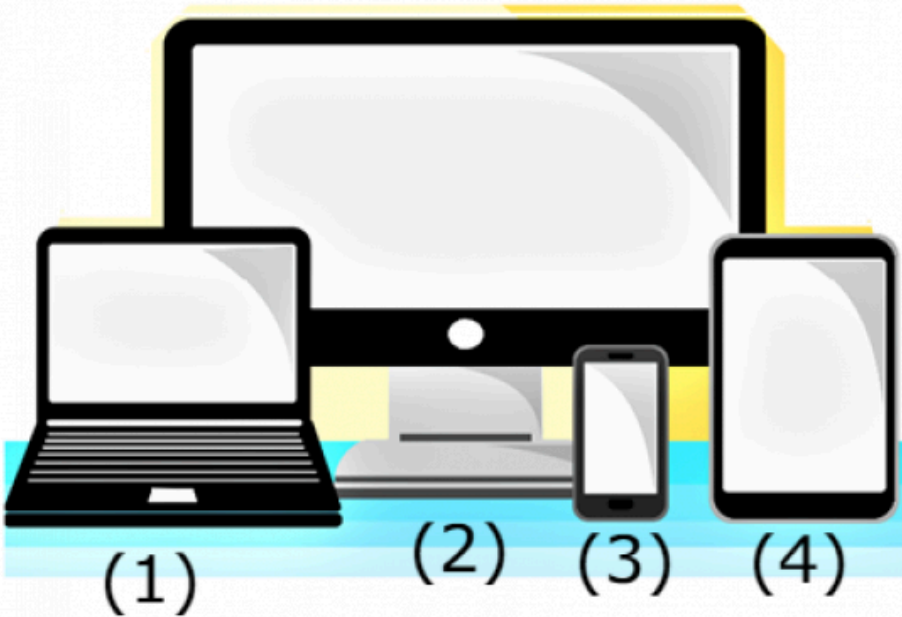


Iyini Ikhomphyutha?

Patricia Ndlovu

Pexels; Pixabay





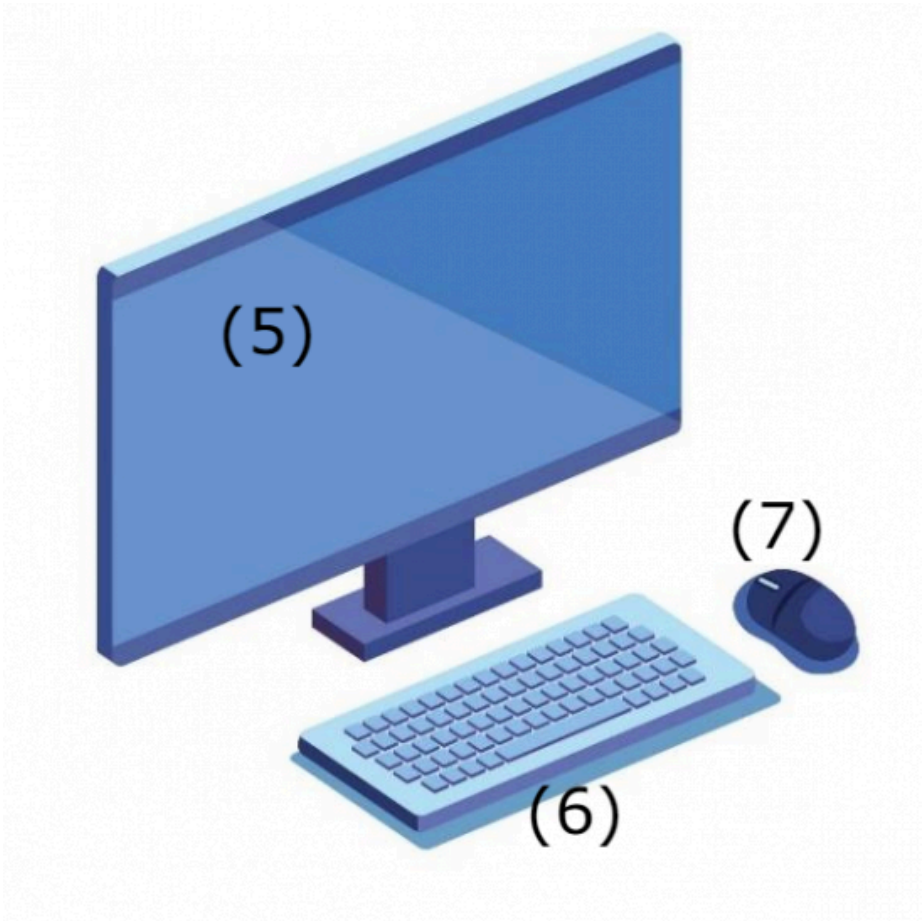
Ikhomphyutha imutjhini osebenza ngelwazi.
Nasi imihlobo emine yamakhomphyutha:

ilebthophu (1)

ideskthophu (2)

isimathifowunu (3)

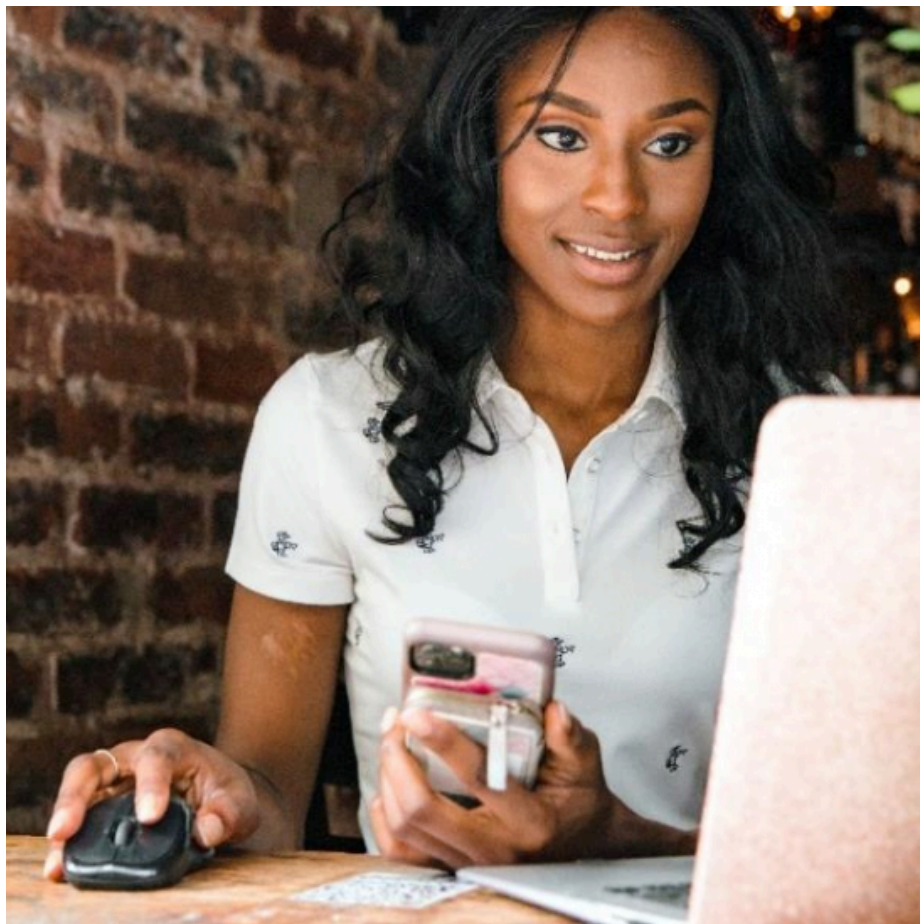
ithebhulethi (4)



Uqala ilwazi esikrinini (5).

Uthayipha ilwazi kukhibhodo (6).

Usebenzisa imawusi (7) ukobana ikukhambise magega nesikrini.



Ukhambisa imawusi lokha nawuqala esikrinini.

Ukhetha ilwazi elisesikrinini bese uyagandelela ukhambise imawusi ngomunwakho.



Inengi lamakhomphyutha amalebthobhu anepedi ethintwako (8) kunokobana abe nemawusi.

Ukhambisa umunwakho hlangana nepedi ethintwako.

Ugandelela kancazana ukobana utjhinge elwazini.



Qala ikhibhodi bese uthola iinkunubhe ezineenomborwezi:

1. Amaledere
2. Iinomboro
3. Amatshwayo wokufunda

Iinkunubhezi zikusiza ukobana uthayiphe ilwazi kukhomphyutha.



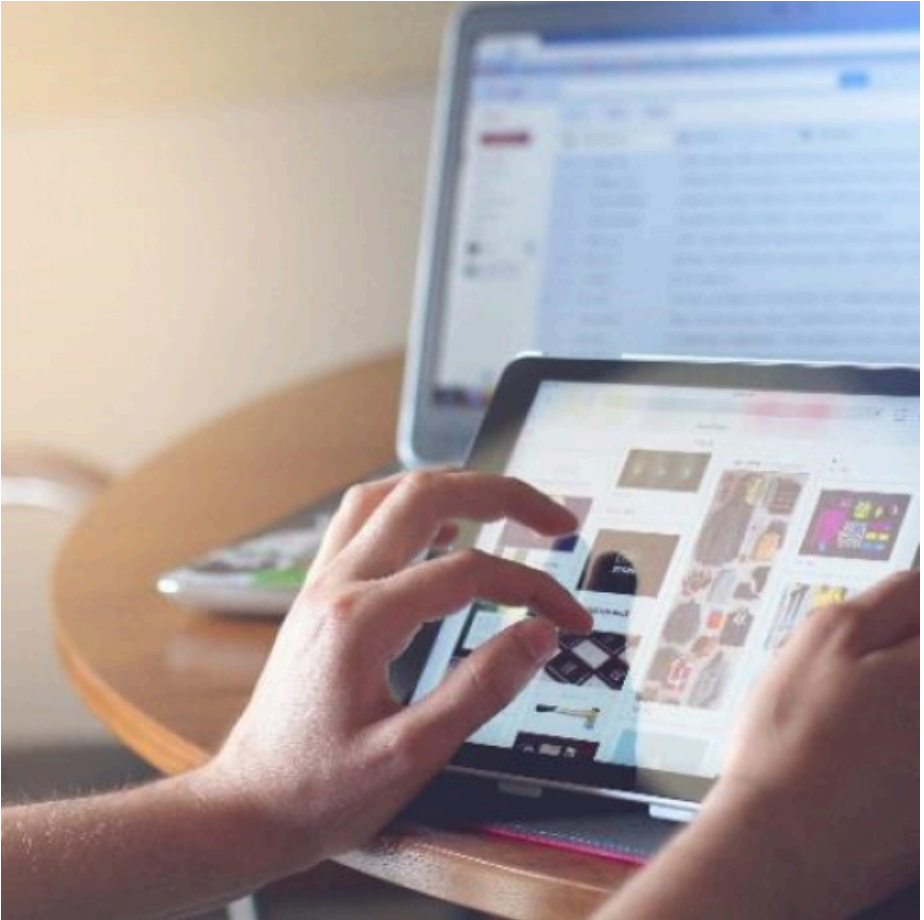
Qala ikhibhodi kilesi isimathifowunu.

Isikrini sesimathifowunu sethu, ungathayipha ngabothubhakghuru bakho.



Amanye amakhomphyutha anesikrini esithintwako (9). Ukwenza isibonelo, amathebhelethi kanye namasimathifowunu.

Usebenzisa umunwakho kanye nothubhakghuru ukobana usebenze ngelwazi elisesikrinini esithintwako.



Lokha nawukhambisa umunwakho nothubhakghurwakho bahlukane, isithombe sizakuba sikhulu.

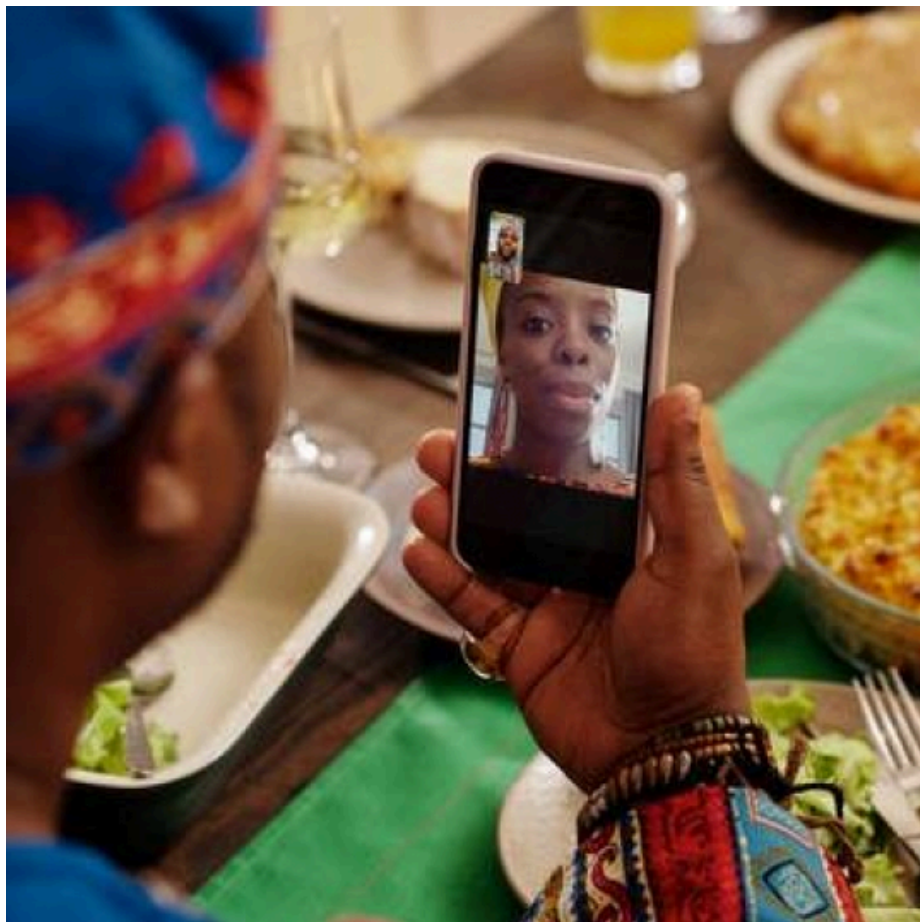
Khambisa umunwakho nothubhakghurwakho kanye kanye ukwenza isithombe sibe sincani.



Amakhomphyutha siwasebenzisela ukusebenza nokufunda.

Amakhomphyutha siwasebenzisela ukuthintana.

Amakhomphyutha siwasebenzisela ukufunda nobumnandi.



Isisetjenziswa ngelinye igama lekhomphyutha.

Ngiziphi iinsetjenziswa ezisetjenziswa mndenakho, begodu uzisebenzisela miphi imisebenzi?

—Imibuzo



1. Kopa isithombe bese uyasileyibula:

- a. Ikhithodi
- b. Imawusi
- c. Isikrini

2. Ukusebenzisa njani lokhu:

- a. ikhithodi?
- b. imawusi?
- c. isikrini?

—Incwadi le ingeyesibili yeencwadi ezine ezililungelunge ezethula iinhloko zethekhnoloji yekhomphyutha.

Indatjana le yenzelwe iphrojekthi yamamatheriyali wokufunda we-Zenex Ulwazi Lwethu ngomnyaka we-2021.



Ulwazi Lwethu is a Zenex Foundation funded and initiated project to develop a series of graded and leisure African language readers and teacher support materials. This project is targeted at teaching and supporting learners in the Foundation Phase to improve their home language reading and understanding. The readers have been originated in nine African languages in collaboration with Molteno Institute for Language and Literacies, Nelson Mandela Institute for Education and Rural Development, Room to Read South Africa, and Saide. All resources are developed as Open Education Resources (OER).



NELSON MANDELA
INSTITUTE FOR
EDUCATION AND
RURAL DEVELOPMENT



Room to Read®
World Change Starts with Educated Children®

Your attribution should include the following:

Title: Iyini Ikhomphyutha?

Author/s: Patricia Ndlovu

Translator/s: Sponono Mahlangu

Illustrator/s: Pexels; Pixabay


Assurer/s: Vusi Mahlangu

Language: isiNdebele



© Zenex Foundation - Saide 2023

CC BY includes the following elements:

BY  - Credit must be given to the creator

