

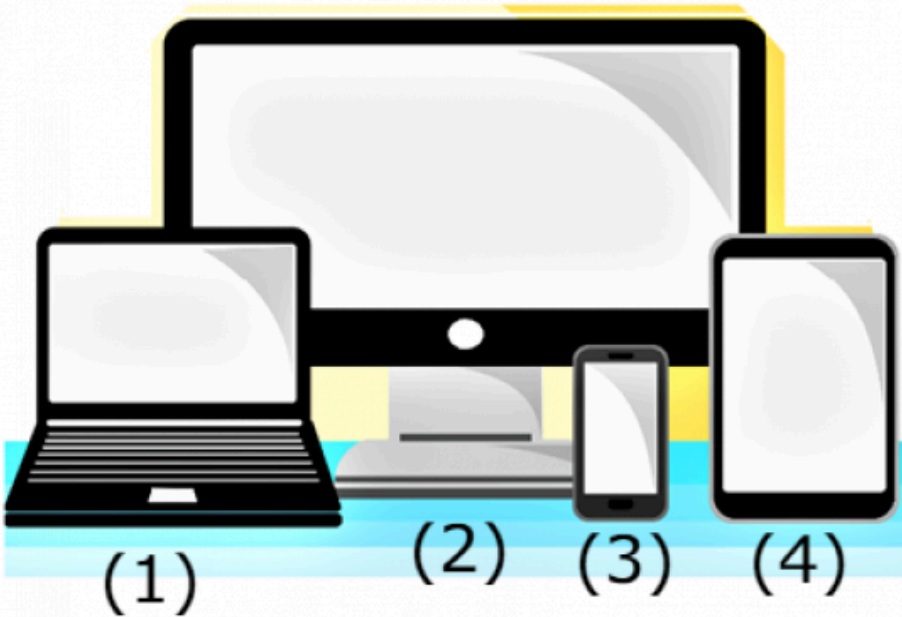


Iyini ikhompuyutha?

Patricia Ndlovu

Pexels; Pixabay





Ikhompyutha ingumshini osebenza ukuthwala ulwazi.

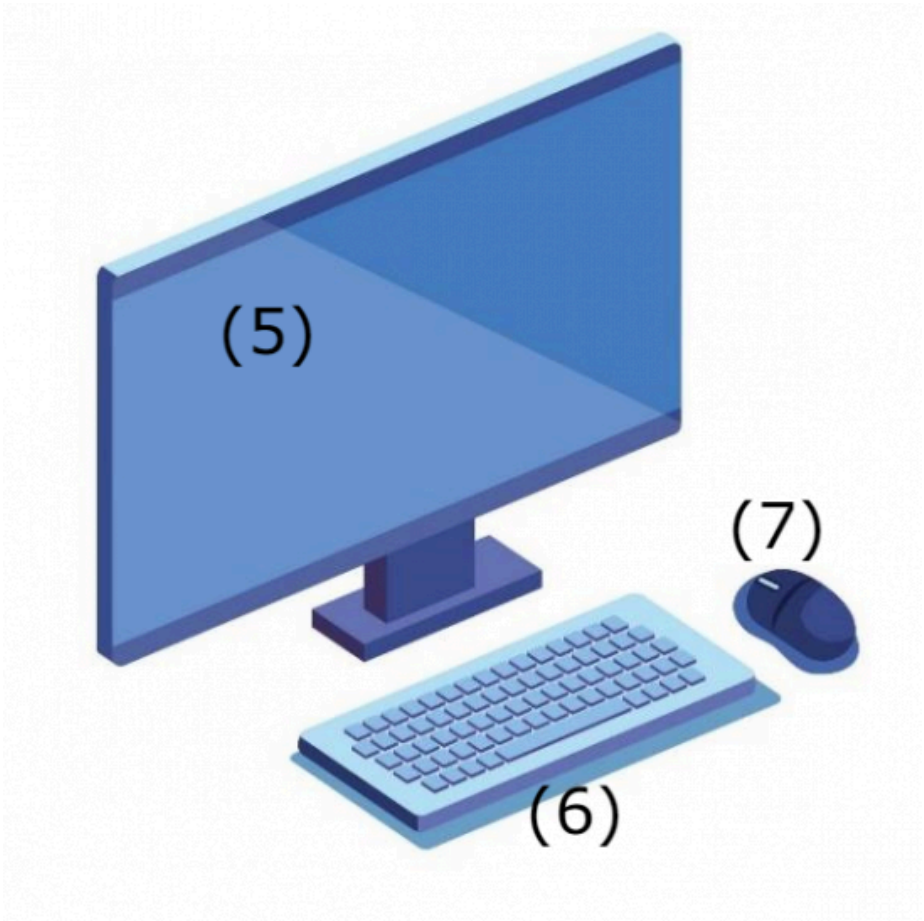
Nazi izinhlobo ezine zamakhompyutha:

Ilephuthophu (1)

Ideskithophu (2)

Ismartphone (3)

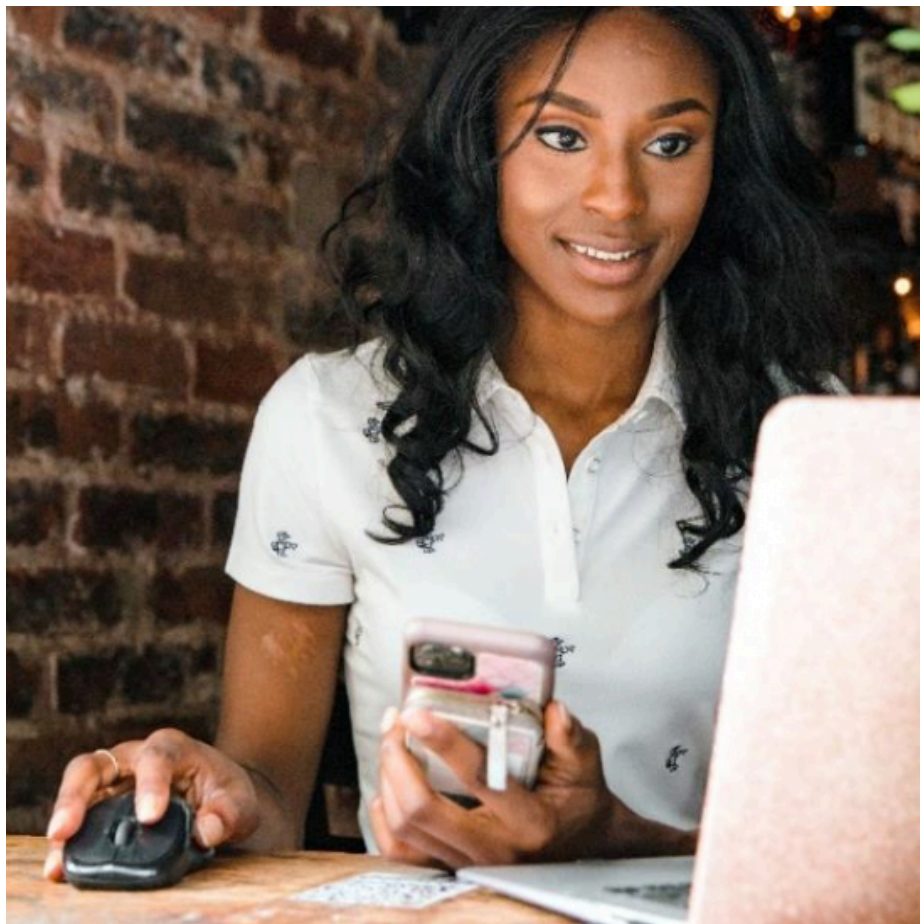
Ithablethi (4)



Ubona ulwazi ebusweni bekhompyutha, iskrini (5).

Ufaka ulwazi ngokubhala usebenzisa izinhlamvu ezibhalwe oqwembeni olubizwa ngokuthi yikhibhodi (6).

Usebenzisa igundanyana okuyilona elikukhomba lapho uzobhala khona kuskrini elibizwa ngokuthi imawusi (7).



Uma ufuna ukubuka noma yini kuskrini uhambisa imawusi uyise ngapha nangapha ube ubuka.

Ukhetha lolo lwazi olufunayo kuskrini ngokucindezela bese uchofoza imawusi ngomunwe wakho.



Amakhompyutha agonwayo wona anendawo okuthintwa kuyo awasebenzisi imawusi.

Uhambisa umunwe wakho kule ndawo okuthintwa kuyo.

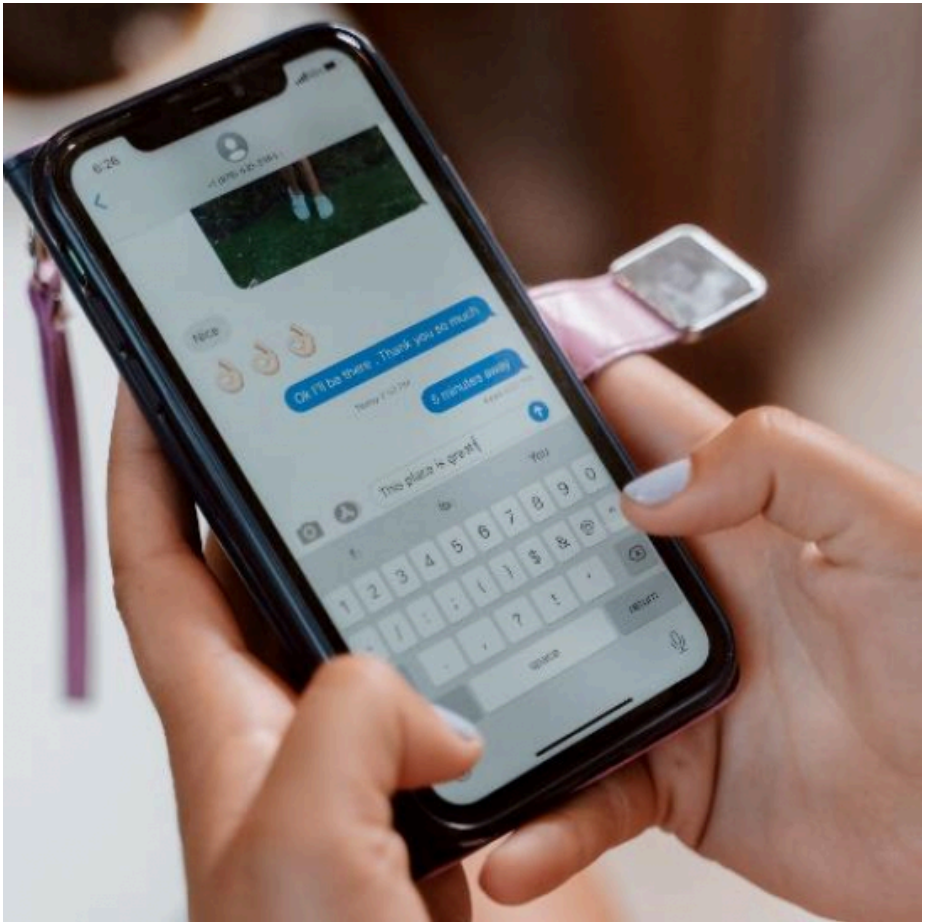
Ucindezela kancane nje ukuze uchofe ulwazi olufunayo.



Ake ubheke ikhibhodi uthole lezi zinkinobho:

1. Izinhlamvu zokwakha amagama
2. Izinombolo
3. Izimpawu zokubhala

Lezi zinkinobho zikusiza ukufaka ulwazi ngokubhala kukhompuyutha.



Manje, bhaka ikhibhodi kumakhalekhukhwini ohlakaniphile.

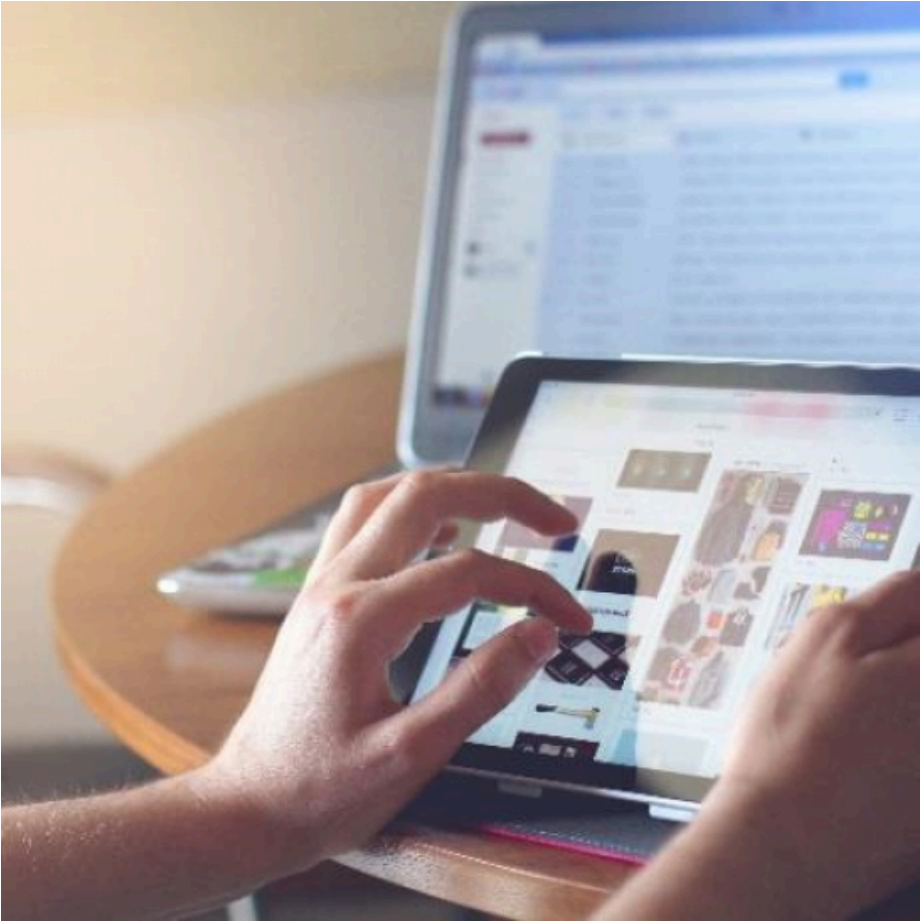
Ebusweni bukamakhalekhukhwini ohlakaniphile, iskrini, ungabhala ngezithupha zakho nje.



Amanye amakhompyutha aneskrini esithintwayo (9).

Izibonelo zalawa, amathablethi nomakhalekhukhwini abahlakaniphile.

Kulawa, usebenzisa umunwe wakho nesithupha ukusebenza ngolwazi olusesikrinini esithintwayo.



Uma umunwe wakho nesithupha
ukuqhelelanisa, isithombe siba sikhulu.

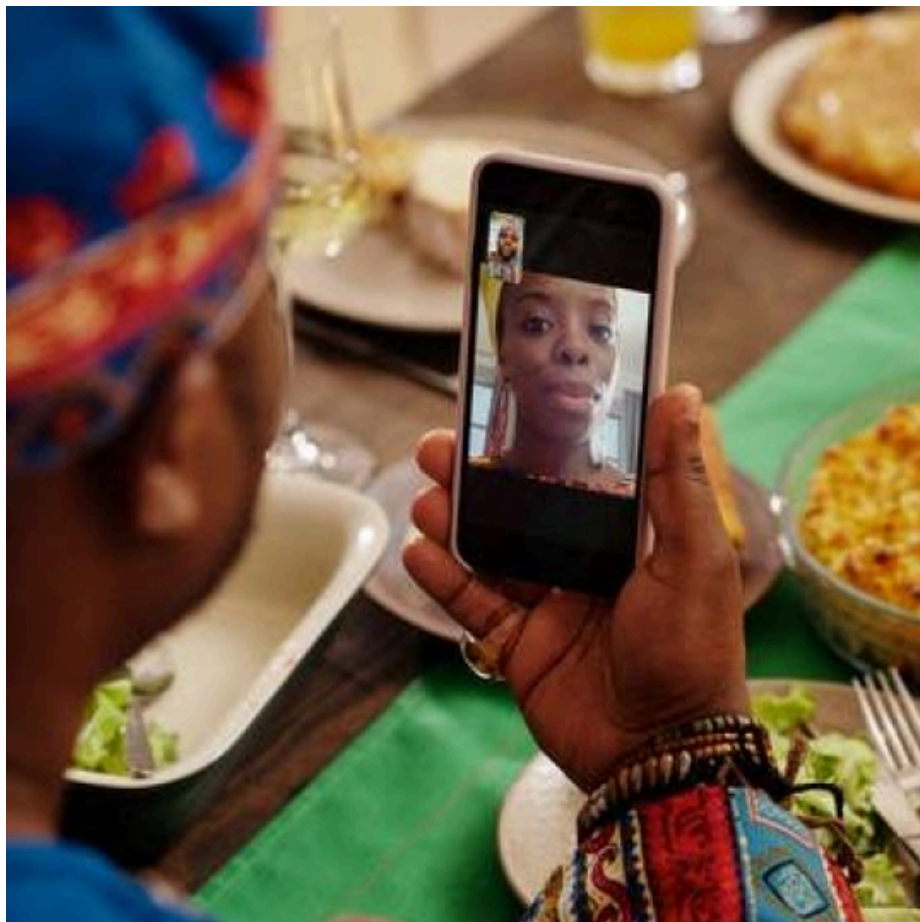
Uma umunwe wakho nesithupha
ukusondelanisa, isithombe siba sincane.



Amakhompyutha siwasebenzisa uma sisebenza emisebenzini kanjalo noma sitadisha.

Siphinde siwasebenzisele ukuxhumana.

Ayasetshenziswa futhi uma sifunda noma sizijabulisa.



Elinye igama lekhompyutha idivayisi.

Ngabe umndeni wakho usebenzisa ziphi izinhlobo zamadivayisi ekwenzeni izinto ezehlukene?

—Imibuzo



1. Kopisha isithombe esinikeziwe bese ukhombisa:

- a. ikhibhodi
- b. imawusi
- c. iskrini

2. Ngabe uyisebenzisa kanjani ingxenye ngayinye yekhomyutha kwezilandelayo?

- a. ikhibhodi?
- b. imawusi?
- c. iskrini?

—Le ncwadi ingenye yezincwadi ezine eziwuchungechunge ezabhalwa ngenhloso yokwethula izihloko zokufunda ngobuchwepheshe bekhompyutha.

Iyingxenye yezinsiza zokufunda zeprojekthi yeZenex Ulwazi Lwethu ezabhalwa ngo-2021.



Ulwazi Lwethu is a Zenex Foundation funded and initiated project to develop a series of graded and leisure African language readers and teacher support materials. This project is targeted at teaching and supporting learners in the Foundation Phase to improve their home language reading and understanding. The readers have been originated in nine African languages in collaboration with Molteno Institute for Language and Literacies, Nelson Mandela Institute for Education and Rural Development, Room to Read South Africa, and Saide. All resources are developed as Open Education Resources (OER).



NELSON MANDELA
INSTITUTE FOR
EDUCATION AND
RURAL DEVELOPMENT



World Change Starts with Educated Children®

Your attribution should include the following:

Title: Iyini ikhompuyutha?

Author/s: Patricia Ndlovu

Illustrator/s: Pexels; Pixabay


Assurer/s: Zanele Zuma

Language: isiZulu



© Zenex Foundation - Saide 2023

CC BY includes the following elements:

BY  - Credit must be given to the creator

