



# Yebo na lidyavhathu

Ntombifuthi Ncwayiba

Kamogelo Matlawe





Yebo na vhabebi vhawe vha dzula ḡakani.

Tsini na hune vha dzula hone, hu dzula Zim zim,  
ḡidyavhathu.

Zim zim u ḡivhelwa u ḡa vhana.



Vho Sikwebu, khotsi a Yebo vho vha vhe muzwimi. Musi vha tshi vhuya hayani, vho vha vha tshi vhidzelela vha ri, “Yebo! Yebo! Kha ɔ nwananga.”

Yebo o vha a tshi ri kha mme awe, “Baba vha khou mmbidza. Ndi fanela u ya khavho.”

Zim zim a vhona hezwi zwithu zwoṭhe.



Zim zim a lingedza u edzisa Vho Sikwebu, “Yebo! Yebo! Kha ɔe nwananga.”

O vha a tshi zwi ɔivha uri ha pfali sa Vho Sikwebu.

“Ndi nga shandukisa hani ipfi ɔanga?” a tshi humbula.



Zim zim a ṭoda thuso kha muloi.

Ndi nga shandukisa hani ipfi ḷanga uri ḷi nge ḷa muthu?" a tshi vhudzisa.

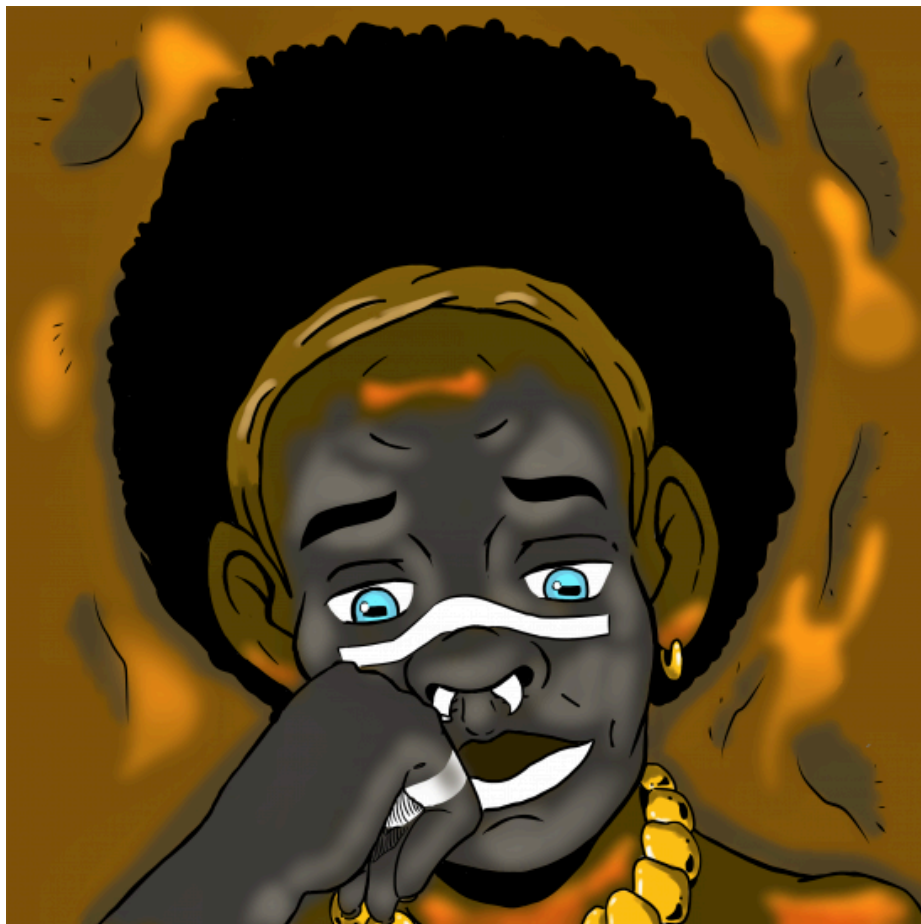
"Fhisa mbaḁo u swikela i tshi vha tswukutswuku, nahone u i mile yoṭhe," muloi a tshi eletshedza.



Zim zim a ya hayani a mila mbaḁo i fhisaho.

Nga murahu a vhidzelela, “Yebo! Yebo! Kha ḁe ṅwananga.”

Hai! Ipfi ḁawe ḁo vha ḁi sa fani na ḁa Vho Sikwebu.  
ḁo vha ḁi ḁidenya nga maanḁa.



Zim zim a songo takalaho a vhuyelela kha muloi.

“Ndi fanela u ita mini uri ndi vhe na ipfi lo sekenaho la muthu?” a tshi vhudzisa.

“Zwino, fhisamba vhusiku hothe nahone nga matsheloni u i mile yothe,” muloi a tshi fhindula.



Nga murahu ha uri a ite zwe a vhudzwa zwone, Zim zim a ya a vhidzelela, “Yebo! Yebo! Kha ǃe ñwananga.”

Ipfi ǃawe ǃo vha ǃi tshi fana kokotolo na ǃa Vho Sikwebu. Yebo a gidimela nǃda.

Fhedzi ho vha hu si khotsi awe.





Yebo o thogomela vhukhakhi hawe fhedzi o vha o no lenga!

O lingedza u gidimela nga ngomu, fhedzi Zim zim a mu fara nga hu leluwaho.

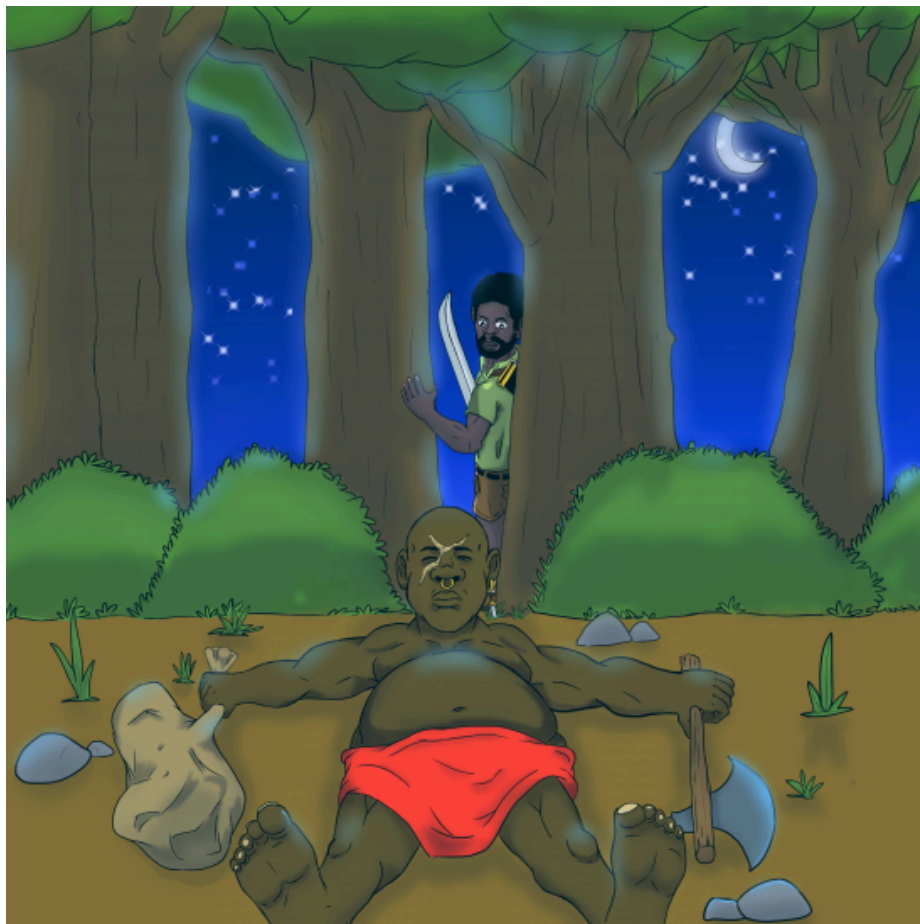
O fara Yebo sa danda nahone a mu isa ngomungomu dakani.



Nga u ṭavhanya, Vho Sikwebu vha vhuya hayani nahone vha vhidzelela, “Yebo! Yebo! Kha ḡe ṛwananga.”

Fhedzi Yebo a sa ḡe. Mme awe vha fhindula, “Vho no ḡi mu vhidza.”

Vha zwi ṭhogomela uri ṛwana wavho o dzhiwa nga Zim zim.



Vho Sikwebu vha dzhia thanda yavho ya u zwima nahone vha ya dakani uri vha tode murwa wavho.

Vhe kule, vha vhona Zim zim o edela philiphilini ya mulambo. O vha e na saga lihulwane tsini nae.



Vho Sikwebu vha n̄nga vha tshi ya kha Zim zim.  
Musi vho no vha tsini, vha dzhia thanda ndapfu  
vha rwa Zim zim.

Zim zim e vukuluku, a fhufhela n̄tha o ḍaḍa a  
shavha.

Vho Sikwebu vha vhofoholola saga nahone vha  
bvisa murwa wavho.



Vho Sikwebu vha kuvhatedza murwa wavho, vho takalela u dovha vha țangana nae. Yebo o vha o takala u vhona khotsi awe.

Vha hangwa nga ha Zim zim nahone vha humela hayani.



Ulwazi Lwethu is a Zenex Foundation funded and initiated project to develop a series of graded and leisure African language readers and teacher support materials. This project is targeted at teaching and supporting learners in the Foundation Phase to improve their home language reading and understanding. The readers have been originated in nine African languages in collaboration with Molteno Institute for Language and Literacies, Nelson Mandela Institute for Education and Rural Development, Room to Read South Africa, and Saide. All resources are developed as Open Education Resources (OER).



NELSON MANDELA  
INSTITUTE FOR  
EDUCATION AND  
RURAL DEVELOPMENT



Room to Read®  
World Change Starts with Educated Children®

Your attribution should include the following:

Title: Yebo na Ijidyavhathu

Author/s: Ntombifuthi Ncwayiba

Translator/s: Tshedza Tlhako

Illustrator/s: Kamogelo Matlawe


Assurer/s: Doris Manyamalala

Language: Tshivenda



© Zenex Foundation - Saide 2023

CC BY includes the following elements:

BY  - Credit must be given to the creator

