



Yebo le Lekgema

Ntombifuthi Ncwayiba

Kamogelo Matlawe





Yebo le batswadi ba gagwe ba be ba dula sethokgweng.

Gona tikologong yeo, go be go dula lekgema la go bitšwa Zim-zim.

Zim-zim o be a tumile ka go ja bana.



Tatago Yebo, Sikwebu e be e le motsomi. Ge a boa gae, o be a bitša a re, "Yebo! Yebo! Etla o ntlhakanetše ngwanaka."

Ke moka Yebo o tla re go mmagwe, "Tate o fihlile, o a mpitša. Ke swanetše go yo mo hlakanetša."

Zim-zim o be a di lebeletše tše ka moka.



Zim-zim o ile a leka go ekiša Sikwebu, “Yebo! Yebo! Etle o ntlhakanetše ngwanaka.”

O ile a lemoga gore lentšu la gagwe le be le sa swane le la Sikwebu.

“Na nka fetoša bjang lentšu la ka?” a ipotšiša.



Zim-zim a ya go kgopela thušo go ramahlale.

“Na nka fetša bjang lentšu la ka gore le swane le la motho?” a botšiša.

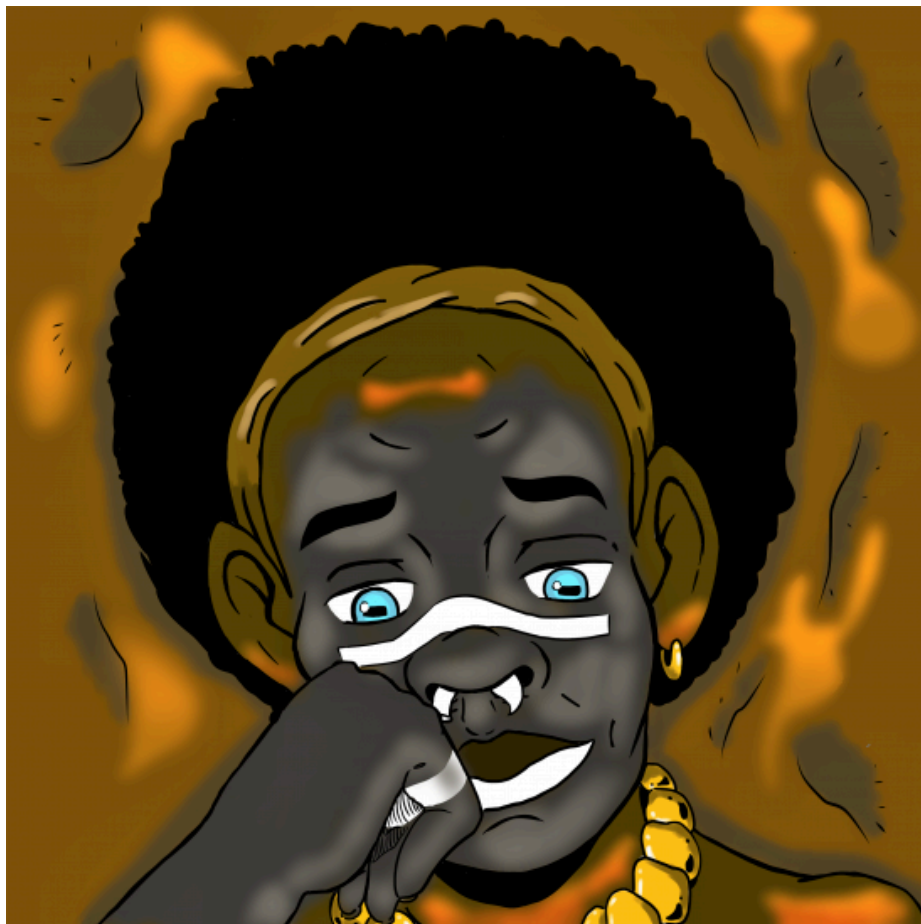
“Fiša selepe ka mollo go fihlela se eba se se khubedu gomme o se metše ka moka ga sona,” ramahlale a mo eletša bjalo.



Zim-zim a ya gae gomme a metša selepe sa go fiša.

Ke moka a bitša, "Yebo! Yebo! Etl a o ntlhakanetše ngwanaka."

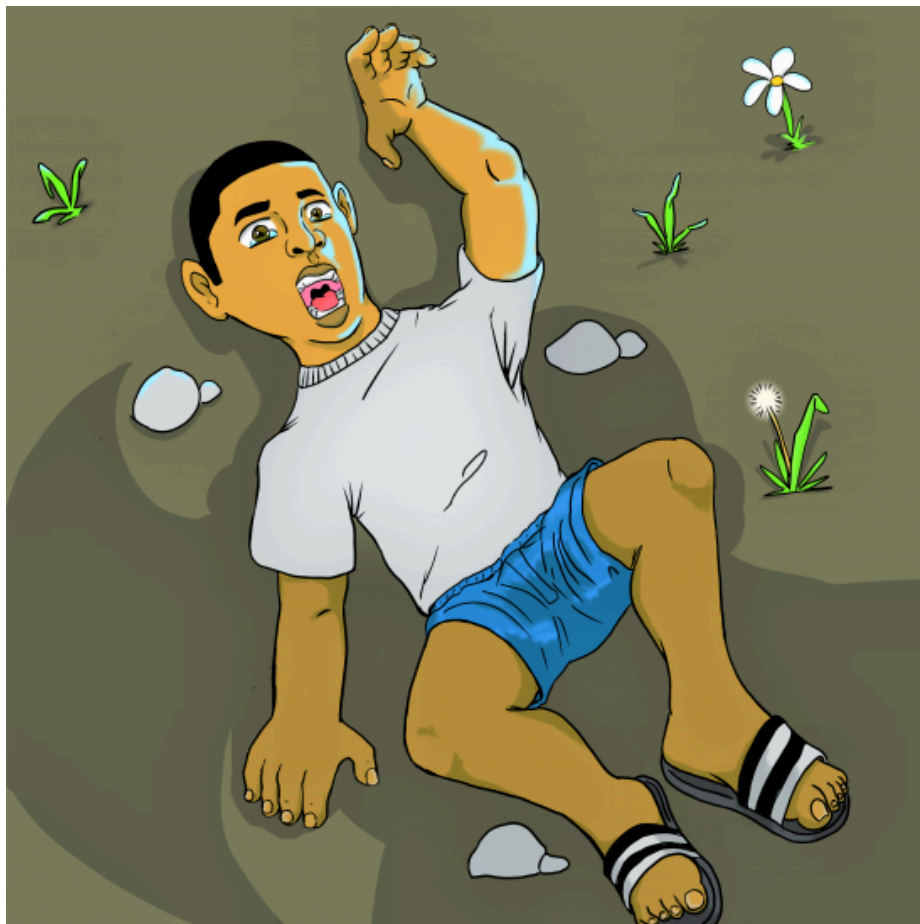
Aowa! Lentšu la gagwe le be le sa swane le la Sikwebu. Le be le na le makgwakgwa.



Zim-zim o be a nyamile gomme a boela go ramahlale.

“Na nka dira eng gore ke be le lentšu le le sesane la motho?” a botšiša.

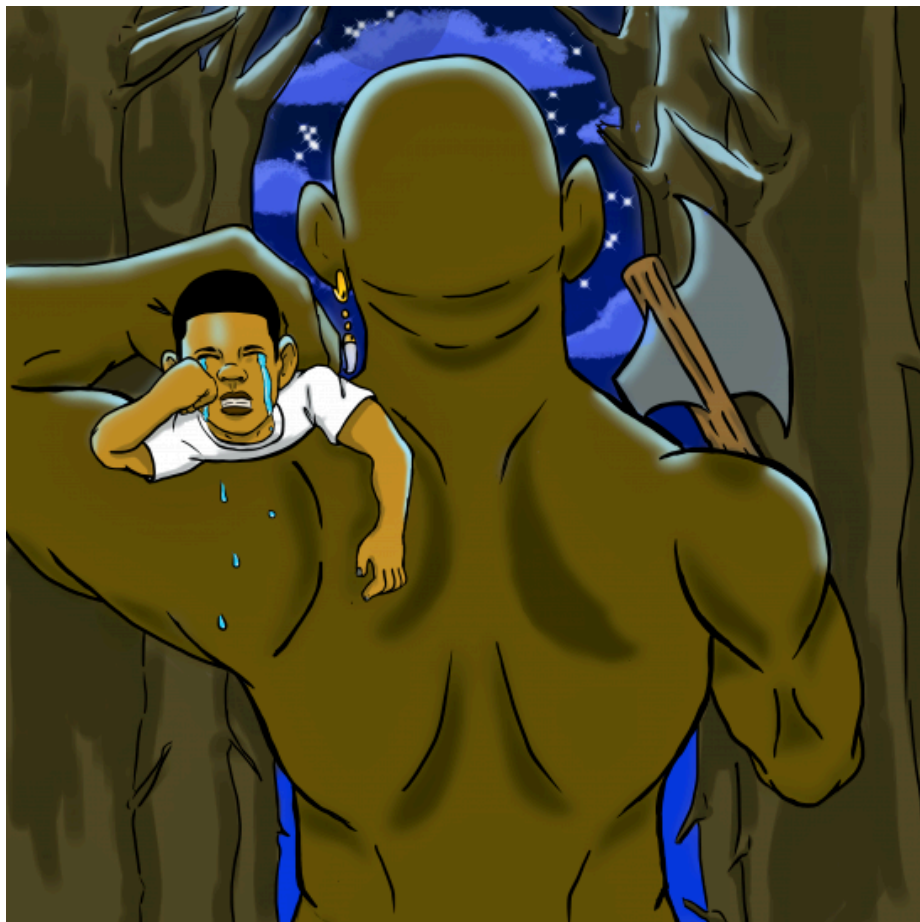
“Bjale o swanelwa ke go fiša selepe bošego ka moka gomme o se metše ka moka ga sona mesong,” ramahlale a araba.



Ka morago ga go dira seo a boditšwego, Zim-zim a ya a bitša, “Yebo! Yebo! Etla o ntlhakanetše ngwanaka.”

Lentšu la gagwe le be le swana gabotse le la Sikwebu. Yebo a kitimela ka ntle.

Efela e be e se tatagwe.



Yebo o lemogile phošo ya gagwe morago ga nako!

O ile a leka go kitimela morago efela Zim-zim a mo swara gabonolo.

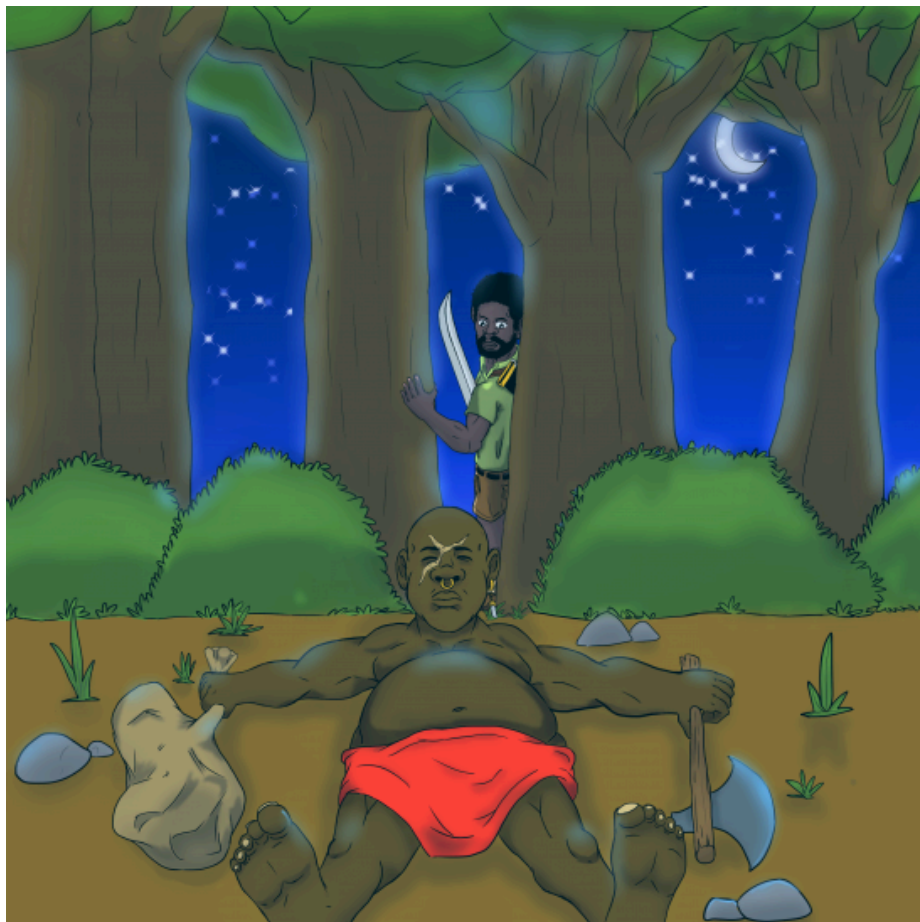
A kuka Yebo go swana le legong gomme a ya le yena kua sethokgweng.



Go se go ye kae, Sikwebu a boa gae gomme a bitša,
“Yebo! Yebo! Etla o ntlhakanetše ngwanaka.”

Efela Yebo a se tšwelele. Mmagwe a mo araba a re, “O
šetše o mmiditše.”

Ba ile ba lemoga gore ngwana wa bona o tšerwe ke
Zim-zim.



Sikwebu o ile a tšea molamo wa gagwe wa go tsoma gomme a tsenä sethokgweng go yo nyaka morwa wa gagwe.

Ge a sa le kgojana, a bona Zim-zim a ikotlolla, a robotše lebopong la noka. Go be go na le mokotla wo mogolo kgauswi le yena.



Sikwebu a khukhunetša Zim-zim. Ge a le kgauswi, a hwidinya molamo wo motelele a betha Zim-zim.

Zim-zim a fofa go tšwa moo a bego a robetše, a gakanegile gomme a tšhaba.

Sikwebu a bofolla mokotla gomme a lokolla morwa wa gagwe.



Sikwebu o ile a gokarela morwa wa gagwe, a thabetše go mo hwetša a sa phela. Yebo le yena o be a thabetše go bona tatagwe.

Ba ile ba lebala ka Zim-zim gomme ba boela gae.



Ulwazi Lwethu is a Zenex Foundation funded and initiated project to develop a series of graded and leisure African language readers and teacher support materials. This project is targeted at teaching and supporting learners in the Foundation Phase to improve their home language reading and understanding. The readers have been originated in nine African languages in collaboration with Molteno Institute for Language and Literacies, Nelson Mandela Institute for Education and Rural Development, Room to Read South Africa, and Saide. All resources are developed as Open Education Resources (OER).



NELSON MANDELA
INSTITUTE FOR
EDUCATION AND
RURAL DEVELOPMENT



Room to Read®
World Change Starts with Educated Children®

Your attribution should include the following:

Title: Yebo le Lekgema

Author/s: Ntombifuthi Ncwayiba

Translator/s: Dikeledi Queen Shai

Illustrator/s: Kamogelo Matlawe


Assurer/s: Connie Makgabo

Language: Sepedi



© Zenex Foundation - Saide 2023

CC BY includes the following elements:

BY  - Credit must be given to the creator

