



Mixo wun'wana, swiharhi swi hlanganile ku hlawula hosi ya swona.

Swiharhi swo hambanahambana na switsotswana swi tile ehlengeletanini.

Hinkwavo va hlamarile. Tindlopfu, xiharhi lexikulu, a ti tangi ehlengeletanini.



Nhlengeletano yi yile emahlweni tindlopfu ti nga ri kona.

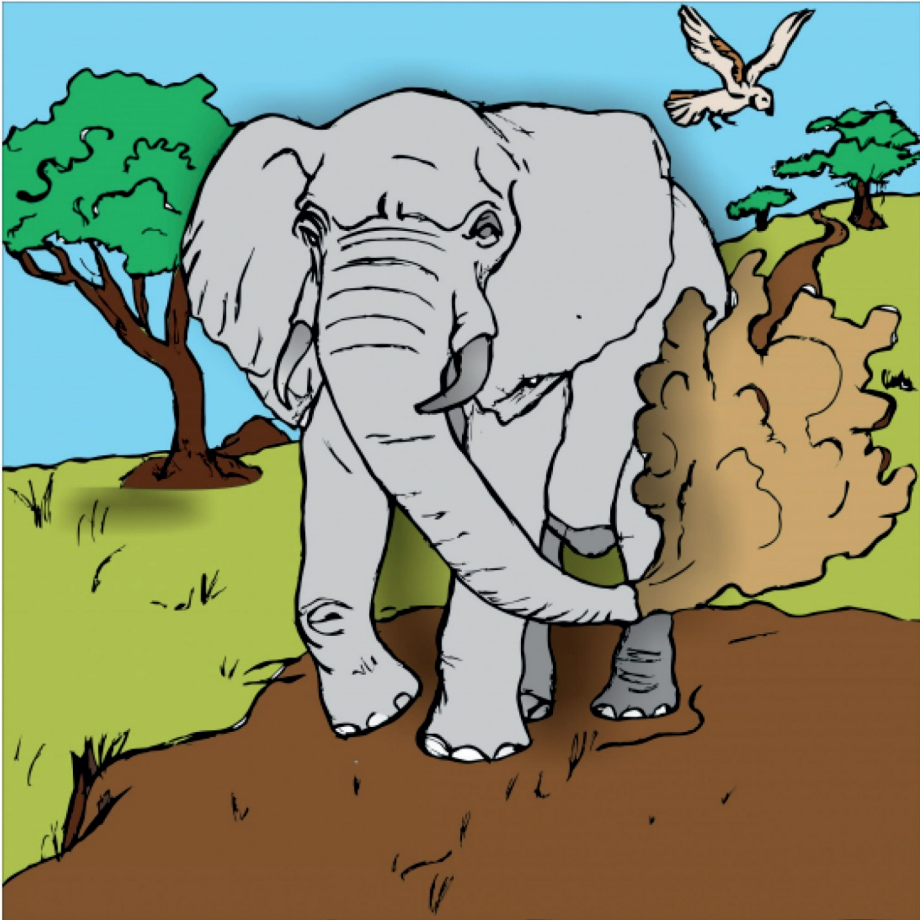
“Hi ta va ni nhlawulo hambiloko tindlopfu ti xwile. Hi fanele hi tiva hosi namutlha,” ku vula Xikhovha.



Swiharhi swi hlawurile Risokoti tanihi hosi yintshwa.

Risokoti ri pfumerile ku va murhangeri hambileswi a ri ri na ku chava.

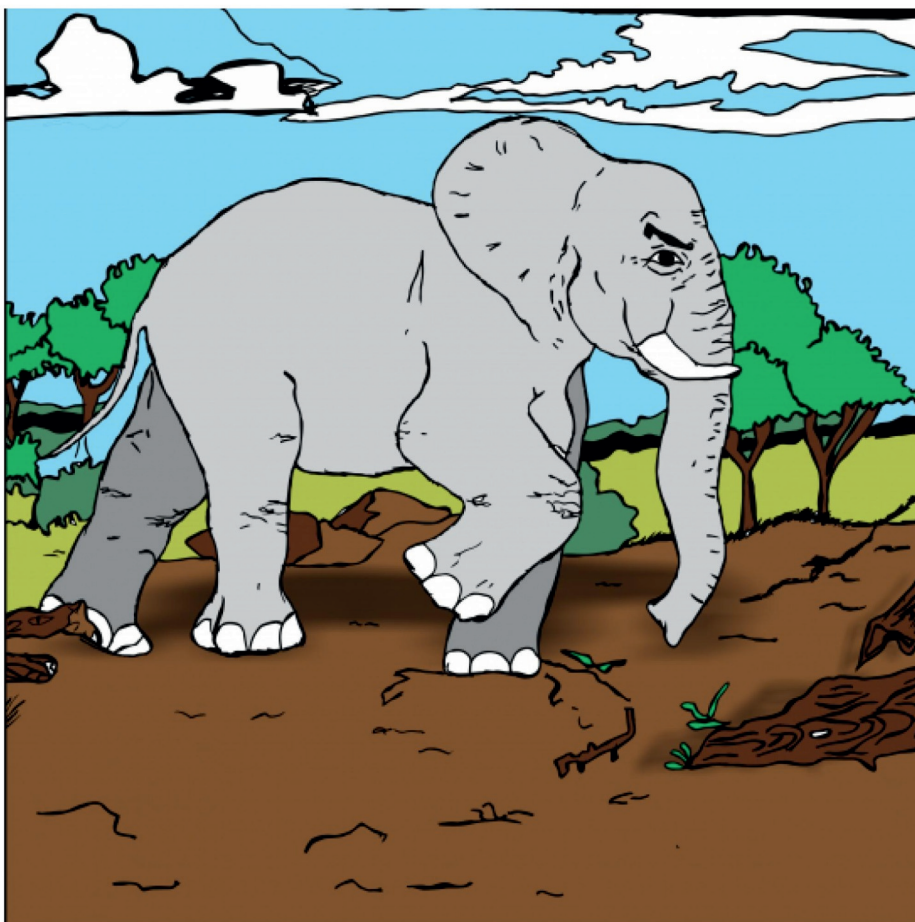
“I vutihlamuleri lebyikulu lebyi katsaka ntirho wo tala,” ri anakanya.



Mahungu ma leswaku Risokoti ri hlawuriwile ku va hosi ma hangalakile hi xihatla.

Ma fikelerile etindleveni ta hosana ya tindlopfu.

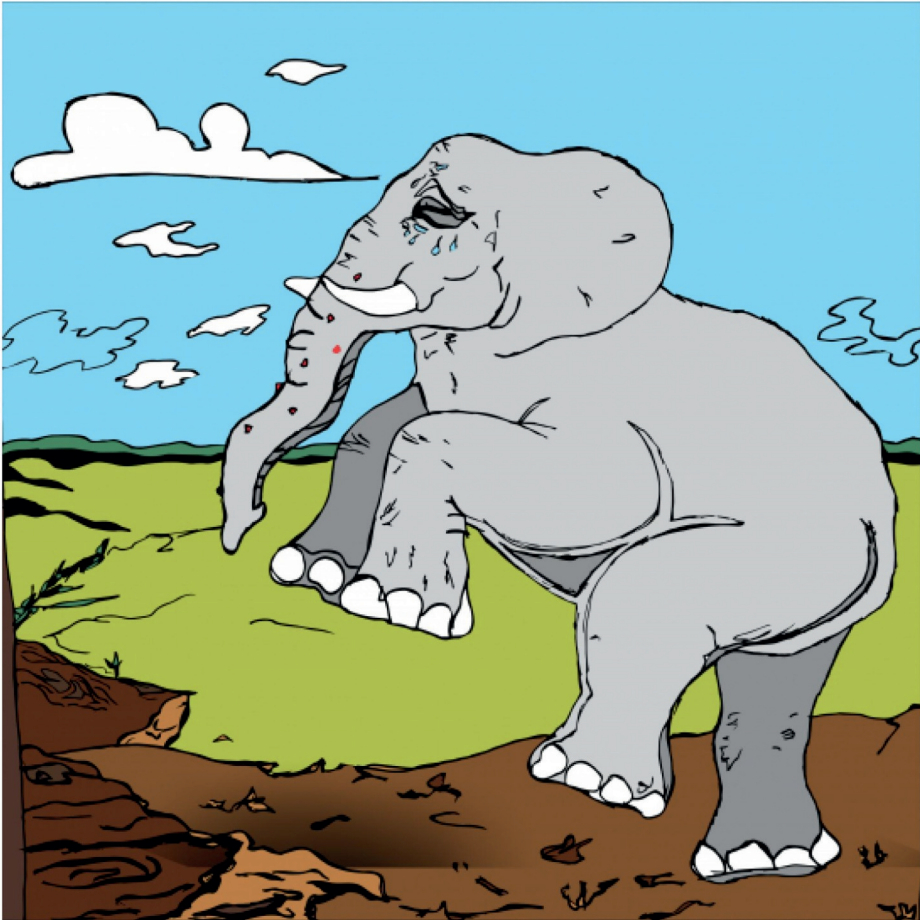
A hlundzukile.



Hosana ya tindlopfu yi yile enhoveni ku ya lava swakudya.

A ku ri xiharhi xa matimba na ku nga hloniphi munhu,
ngopfungopfu swihadyana swo fana na masokoti.

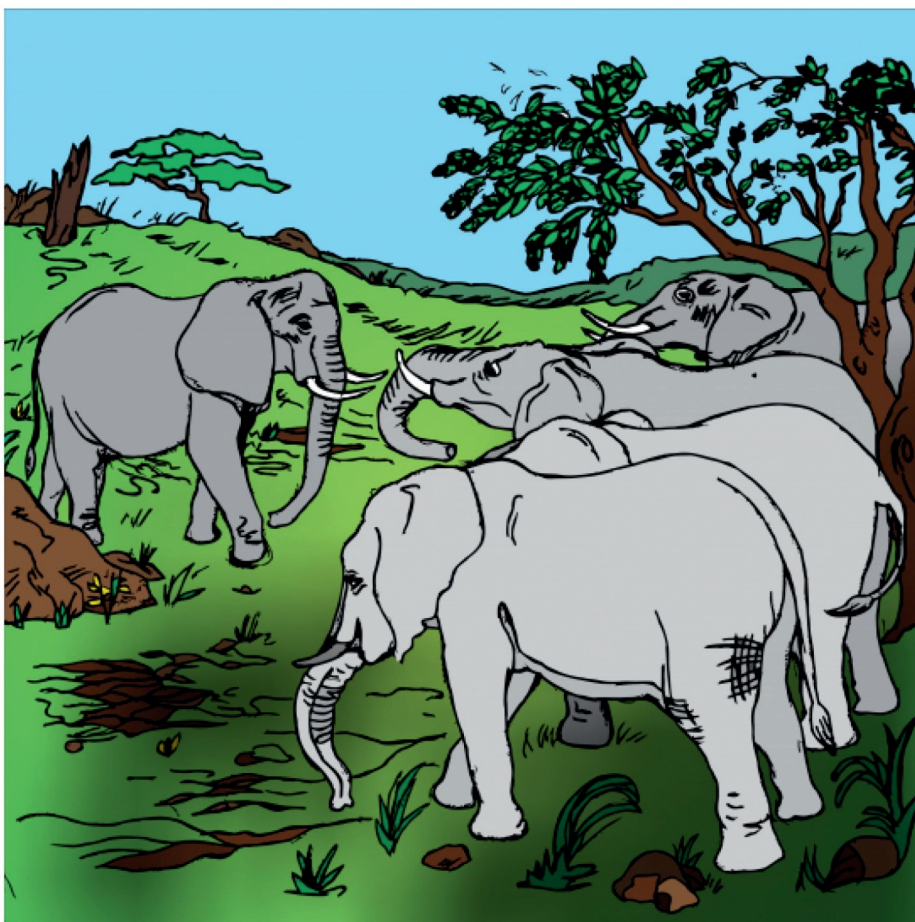
A yi nga ri na mhaka na leswaku yi nghanile endzilikanini wa
masokoti.



Hosana leya matimba yi hlahlile xigodo loko yi ri karhi yi famba. Tshungu wa masokoti wu baleka!

Hosi Risokoti lontshwa loyi a nga ha ku hlawuriwa a kasa endzeni ka xakwa.

Risokoti ri ku, "U fanele u xixima un'wana na un'wana." Ri lumile hosana ko hlaya swinene.



Hosana leyitsongo ya ndlopfu yi rila na ku kombela ku rivaleriwa.

Siku rero yi yile ekaya yi hlundzukile swinene naswona yi ri hava swakudya.

Tindlopfu tin'wana ti hlamarile hi switshembiso leswi hosana ya vona yi nga swi endla eka Hosi Risokoti.



Tindlopfu a ti tsakile ku ri hosana ya vona yi vuyile eka vona.
A ti nga ri na mhaka na leswaku Risokoti ri ri yini.
Masokoti ma fumile hambileswi a ma ri lamatsongo.