



UNala noNaka basekampeni yesikolo.

Bahloma iintende zabo bese babukela ilanga esele libovu litjhinga.

“Lihle,” kutjho uNala ngokuthaba.



Babukela ilanga litjhingela ngemva kwehorayizoni etjingalanga.

“Namhlanje kunenyezi ezeleko,” kuyelela uNaka njengoba inyezi iphuma epumalanga.

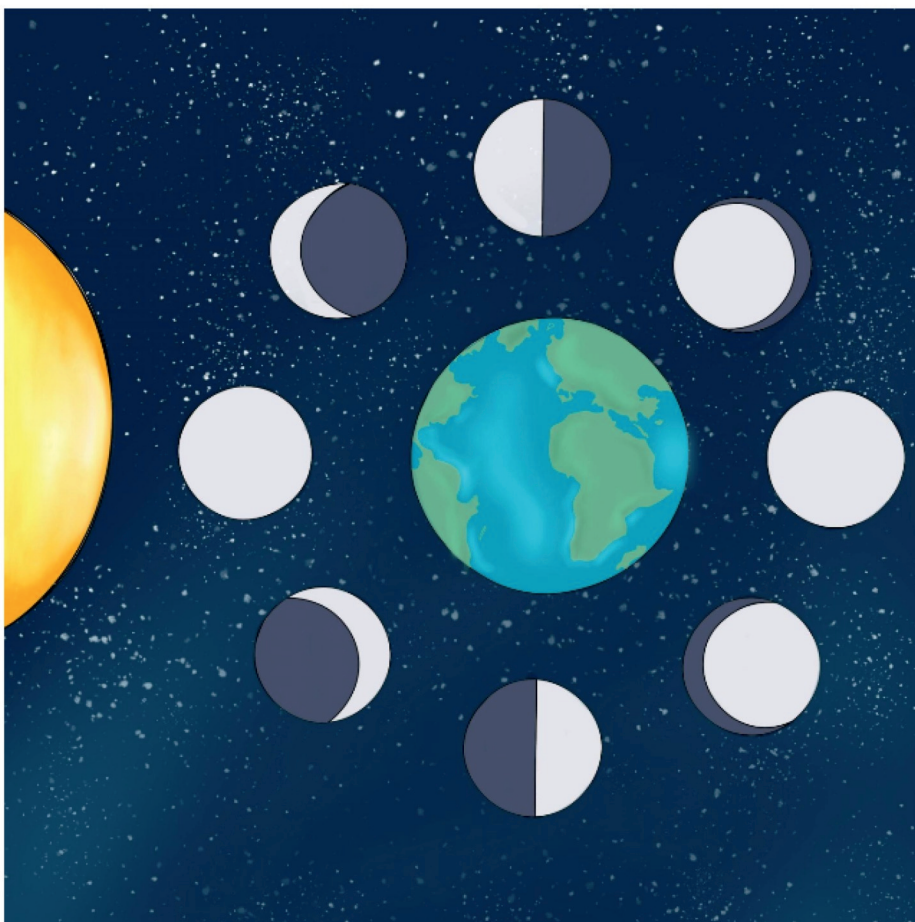


Abantwana balala ngemigogodlha yabo bese bafunda isibhakabhaka sebusuku.

UNaka uyababaza, "Wuu, kuneenkwekwezi ezinengi, begodu ziphazima njengamadayimani!"



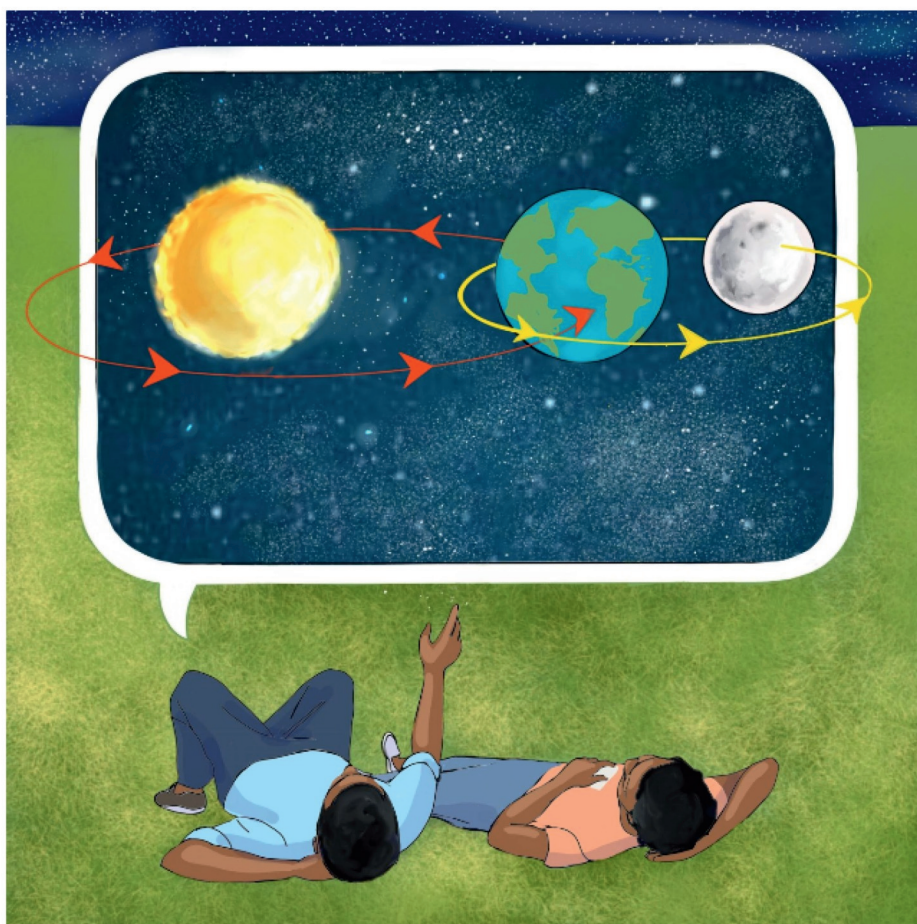
Uyatjho, "Inyezi iphazima ngombana ibuyisa umkhanyo welanga. Lokha nakunyenyezi ezeleko, kuqaleka ngasuthi inyezi yoke itikiwe."



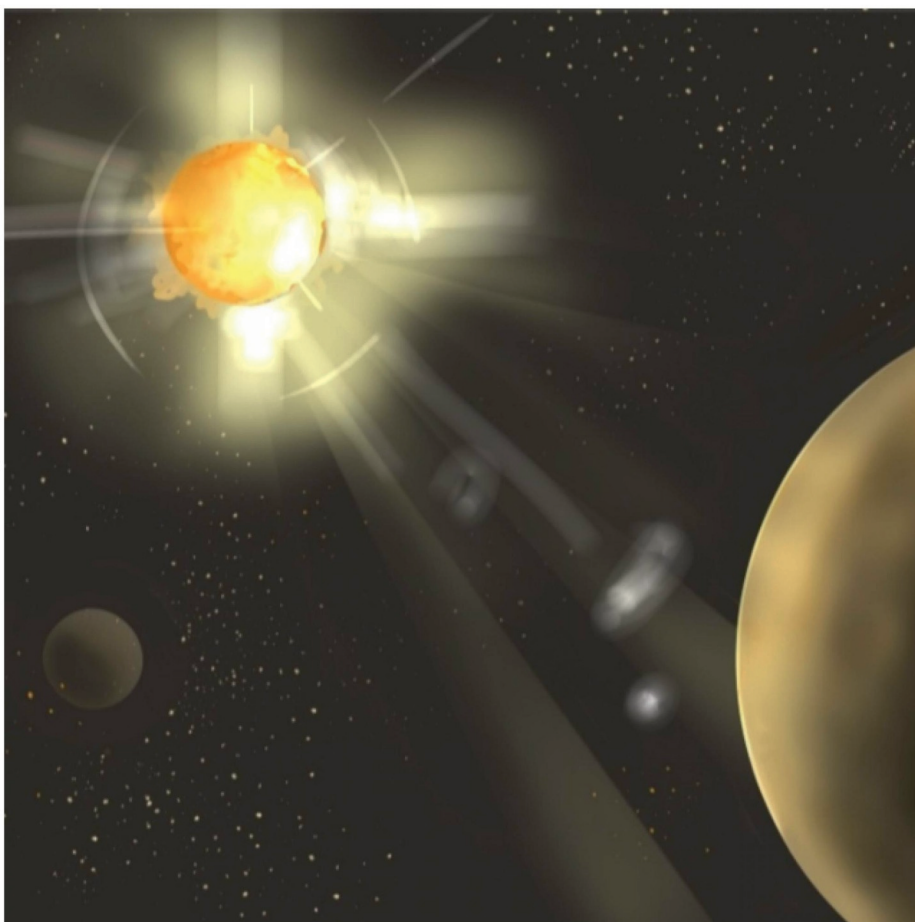
UNala uyavuma, “Inyezi ikhamba izombezeze iphasi. Kesinye isikhathi sibona ingcenywe yomkhanyo wenyezi kwaphela, begodu iqaleka njengebhanana.”



Uyaraga, “Inyezi nayizeleko ifana nebholo yeenyawo. Lokha inyanga nayikhambako, sibona inyezi ehafu, begodu ibe nejamo lebhanana.”

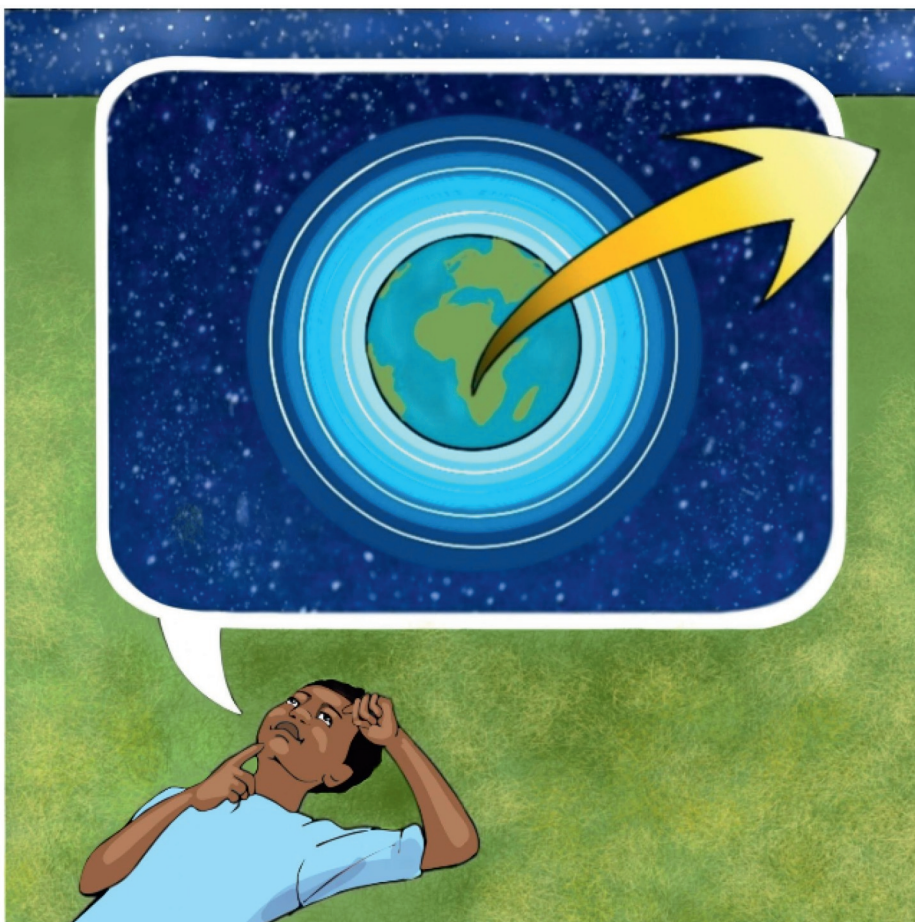


UNaka utjho ngokuzikhakhazisa, “Bengikwazi lokho! Ngiyazi nokuthi inyezi ikhamba mazombe nephasi, begodu inyezi nephasi zikhamba zizombe ilanga.”

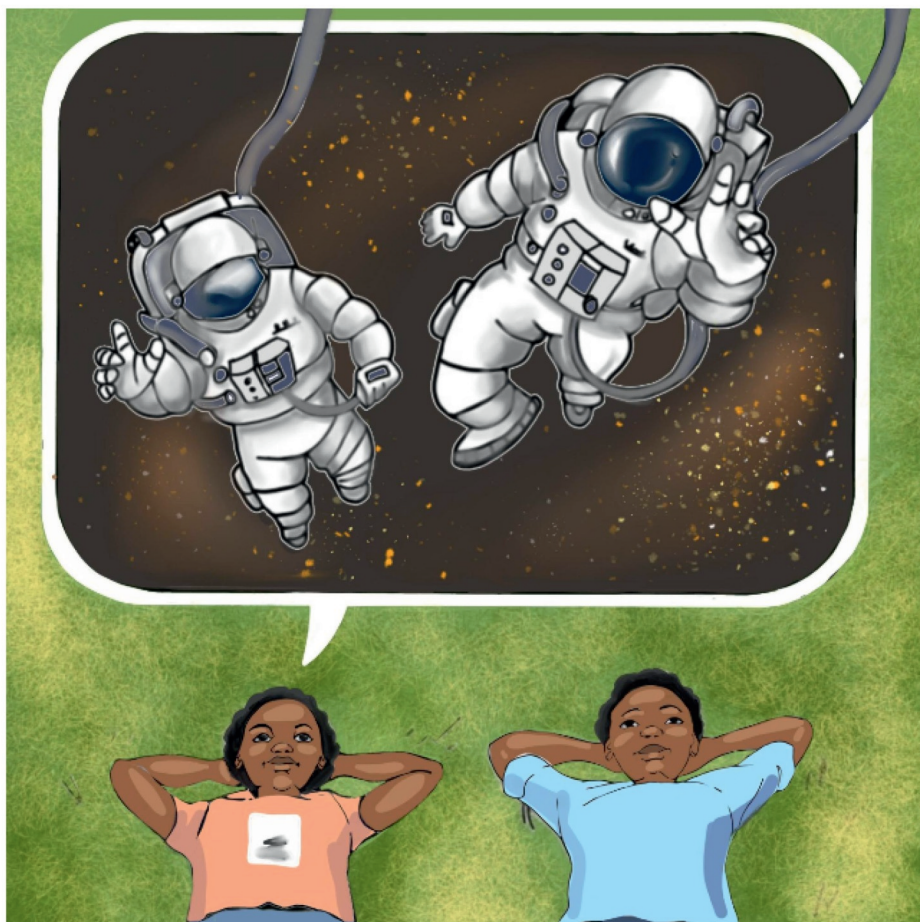


UNala uyamomotheka, “Uthi bewazi bona ilanga liyikwekwezi?”

Uyangezelela, “Ilanga liyikwekwezi ekulu yokutjhisa iinrhasi, yenze umkhanyo nomtjhiso.”



UNaka uyayelela, “Amalampa wedrobheni nakangekho, sibona isibhakabhaka kuhle. Umkhathi uthoma ngaphezu kwelarha lommoya mazombe nephasi, kodwana umkhathi uphelelaphi?”



UNala uyamomotheka, "Sizakuba ma-astronathi begodu sikhambe ngesitjuzi semkhathini esimsinya khulu. Sizokuphapha sidlule amaplanethi neenkwekwezi ezikude khulu. Bese, sizokwazi bona umkhathi uphelelaphi."



—Imibuzo

1. Indatjana le imayelana nabobani? Benzani?
2. Khuyini inyezi ezeleko? Idwebe.
3. Inyezi iphuma kuphi?
4. Ngiyiphi ikwekwezi eseduze khulu nephasi?
5. Kunamaplanethi abu-8. Thola amabizo wawo.
6. Dweba isithombe selanga namaplanethi.