

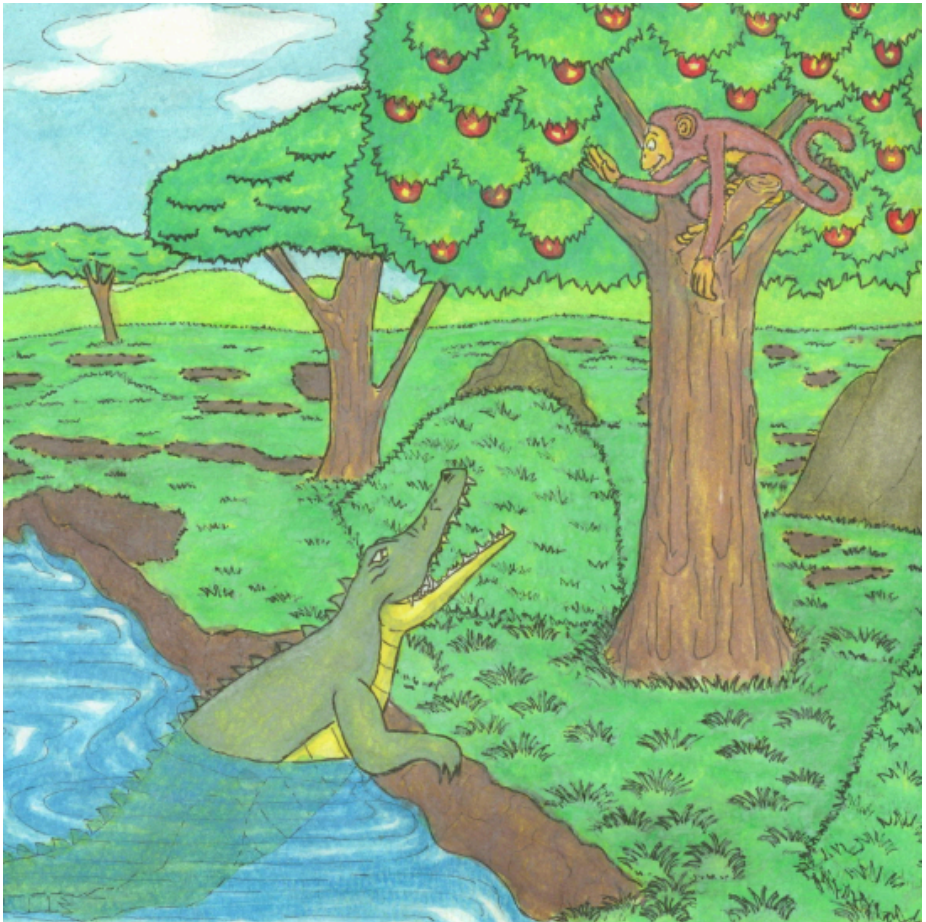


Kwena le Kgabo e ne e le ditsala

Ntombikayise Malaza

Sibusiso Khumalo





Kwena le Kgabo e ne e le ditsala tse di tlhwathwa.

Kwena o ne a nna mo nokeng.

Kgabo o ne a nna mo setlhareng go bapa le noka.



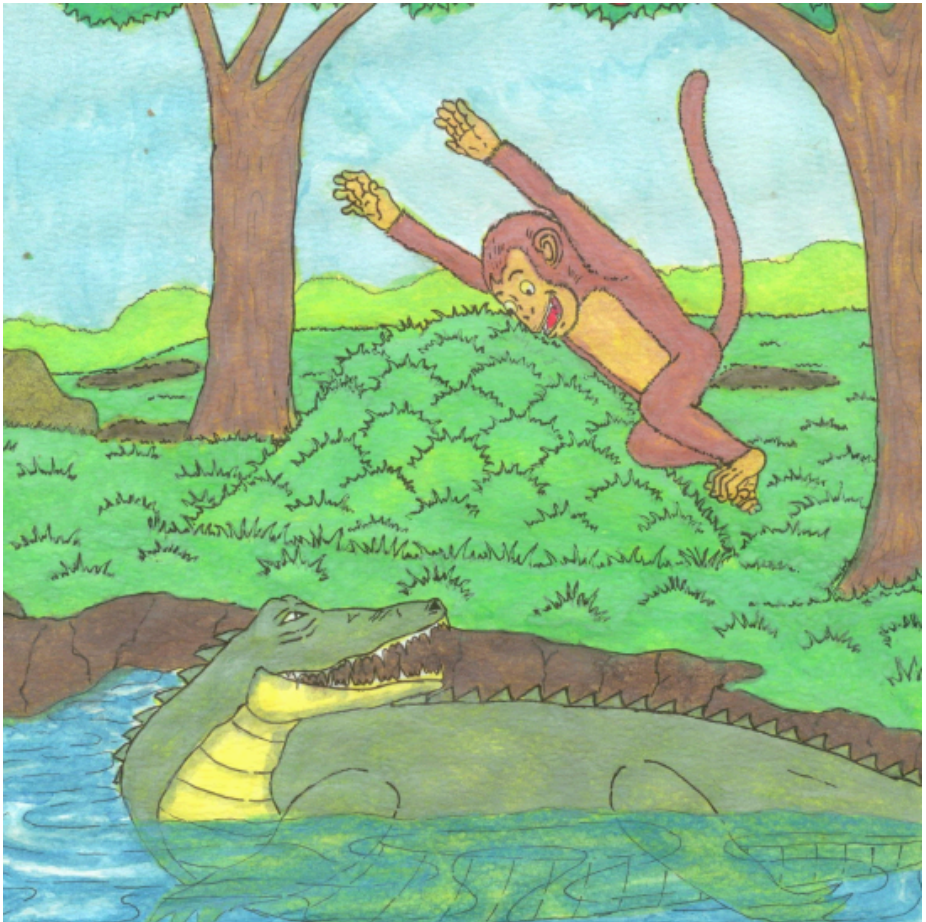
Kwena o ne a ja ditlhapi mo nokeng.

Kgabo o ne a ja maungo mo ditlhareng.



Ngwana wa ga Kwena o ne a lwala thata.

Nkokoagwe o ne a re, "O tla fodisiwa fela ke sebete sa Kgabo."



Kwena a laletsa Kgabo kwa ntlong ya gagwe mo nokeng.

A mo tshepisa go mmelega go mo kgabaganyisa noka.



Fa Kwena e thuma, ya bolelela Kgabo ka ngwana wa yona yo o lwalang.

“O tla fodisiwa fela ke sebete sa Kgabo,”
Kwena a bua ka kutlobotlhoko.



“O ka bo o mpoletse pele re tsamaya!”
Kgabo a rialo.

“Sebete sa me se nna mo setlhareng, a
re se boele,” a rialo.



Kwena a boela a thumela losing.

Kgabo a fologa mo mokokotlong wa gagwe mme a tabogela kwa godimo ga setlhare.

Kwena a leta.



Kwena a leta nako e telele, fela Kgabo a se boe.



Ulwazi Lwethu is a Zenex Foundation funded and initiated project to develop a series of graded and leisure African language readers and teacher support materials. This project is targeted at teaching and supporting learners in the Foundation Phase to improve their home language reading and understanding. The readers have been originated in nine African languages in collaboration with Molteno Institute for Language and Literacies, Nelson Mandela Institute for Education and Rural Development, Room to Read South Africa, and Saide. All resources are developed as Open Education Resources (OER).



NELSON MANDELA
INSTITUTE FOR
EDUCATION AND
RURAL DEVELOPMENT



World Change Starts with Educated Children

Your attribution should include the following:

Title: Kwena le Kgabo e ne e le ditsala

Author/s: Ntombikayise Malaza

Translator/s: Lorato Trok

Illustrator/s: Sibusiso Khumalo

Assurer/s: Dineo Moatshe, Opelo Thole

Language: Setswana

© Zenex Foundation - Saide 2023

CC BY includes the following elements:

BY  - Credit must be given to the creator

