

# Sugo do laxabure labo

Safandaana : Wekunya Cornelius

Yillandaana : Banjugu S. Daraame

Natalindaana : Wiehan de Jager

Maali xaranyinfanan minisitirinkan da ke kitaabe bakken naamari.

Minisiritirinka ke golliranka AMALAN da a nuxudufoonun segesege.

sooninke

Mali

Copyright © 2022, SIL LEAD Inc. et SIL International



<http://creativecommons.org/licenses/by/4.0/>

Cette création peut être utilisée à des fins commerciales.  
Cette création peut être adaptée ou complétée. Les mentions relatives aux droits d'auteur, d'illustrateur, etc. doivent être conservées.

Disclaimer: You are free to download, copy, translate or adapt this story and use the illustrations as long as you attribute or credit the original author/s and illustrator/s.

Sefexanne : Banjugu S. Daraame

Adapté de la version originale, *Goat and the hyena's knife*, Copyright © 2015, African Storybook Initiative. Sous licence CC BY 4.0. Disclaimer: You are free to download, copy, translate or adapt this story and use the illustrations as long as you attribute or credit the original author/s and illustrator/s.

Xawaranaaxunde, *Goat and the hyena's knife*, Copyright © 2015, African Storybook Initiative. Licence CC BY 4.0.  
[www.africanstorybook.org](http://www.africanstorybook.org)

Ke kitaabe dabari ti do ke leminanxaranfedde kappalenmon deemanden saabu danja ya ken ga ni All Children Reading: A Grand Challenge for Development (ACR GCD): United States Agency for International Development (USAID), World Vision do Australian Government a do kitaabinfedde Global Book Alliance. SIL LEAD, Inc. yan da golle ke dabari, xa ku kappanlenkafonu ACR GCD do kitaabinfedde Global Book Alliance sinmayun feti. Sere su nda ke kitaabe yilla ti a moxonma su ya, kafo ACR GCD fo yillante feti, a do xa juumeyu beenu nda wari a noxon di, kafo ke batte feti.



GLOBAL BOOK ALLIANCE



USAID  
DU PEUPLE AMERICAIN

World Vision



Australian Aid





Koota su, sugun wa yittidarun  
yigana.



Laxabure yaalanten do i labon ri  
sugon kanma.



Sugon da yitten darun kutu ti  
labon ɗa.



Ken falle, laxabure ri do i labon  
ŋa.

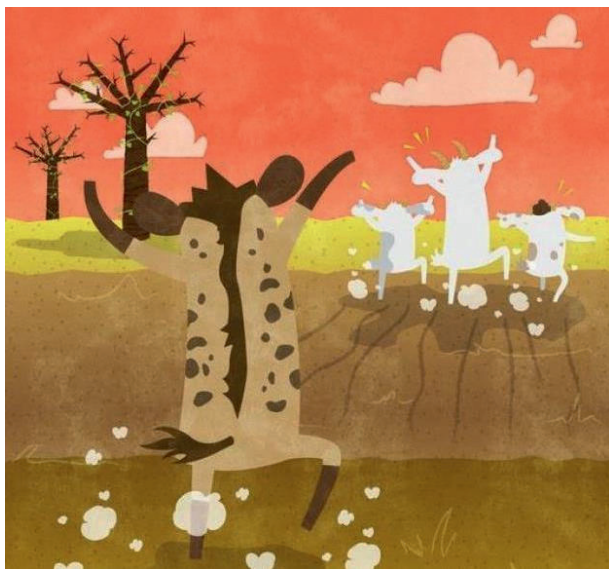


Sugo wa labon mundunu ɗujen  
kanma.



Laxabure xaaru sugo yi ti i wa a  
kanbunu !





Gelli ken ŋa, laxabure do sugo  
yaaxon ra nta jaana fillo yi.



Sugo wa finna laxabure labon mundunu njunen kanma.

