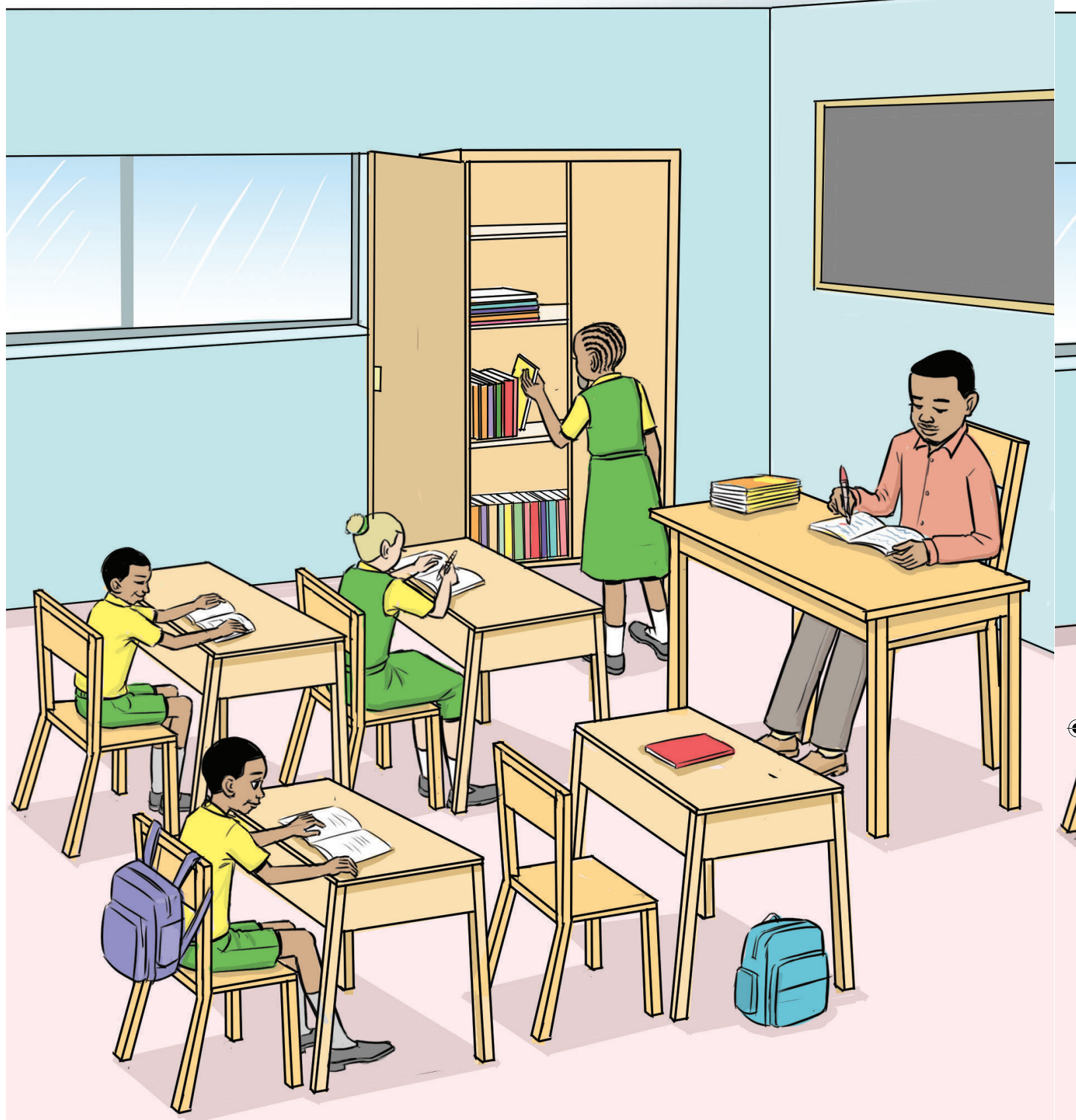


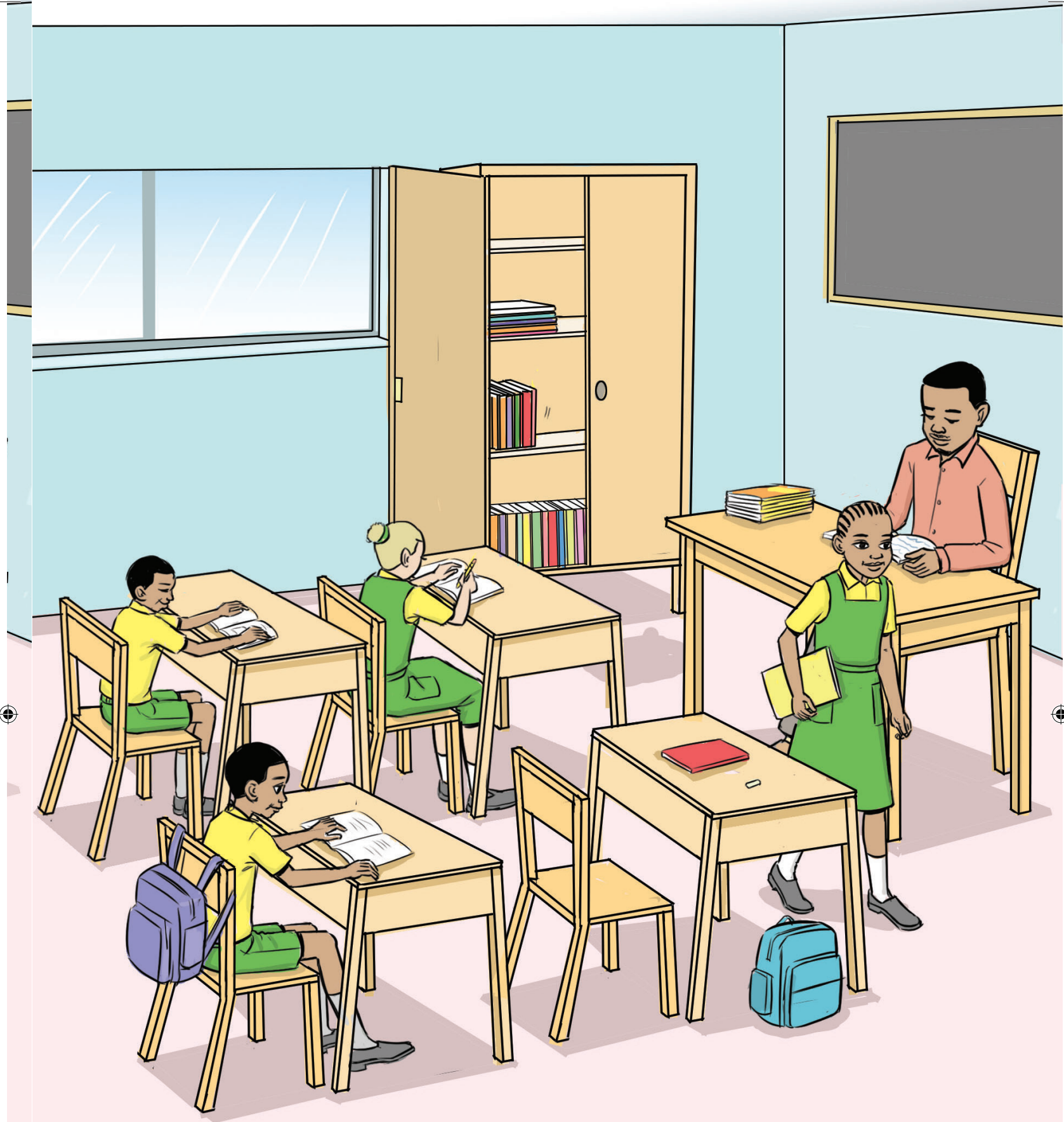
Naswa ali mukilasi. Ekilasi yabwe elimo ekabati.





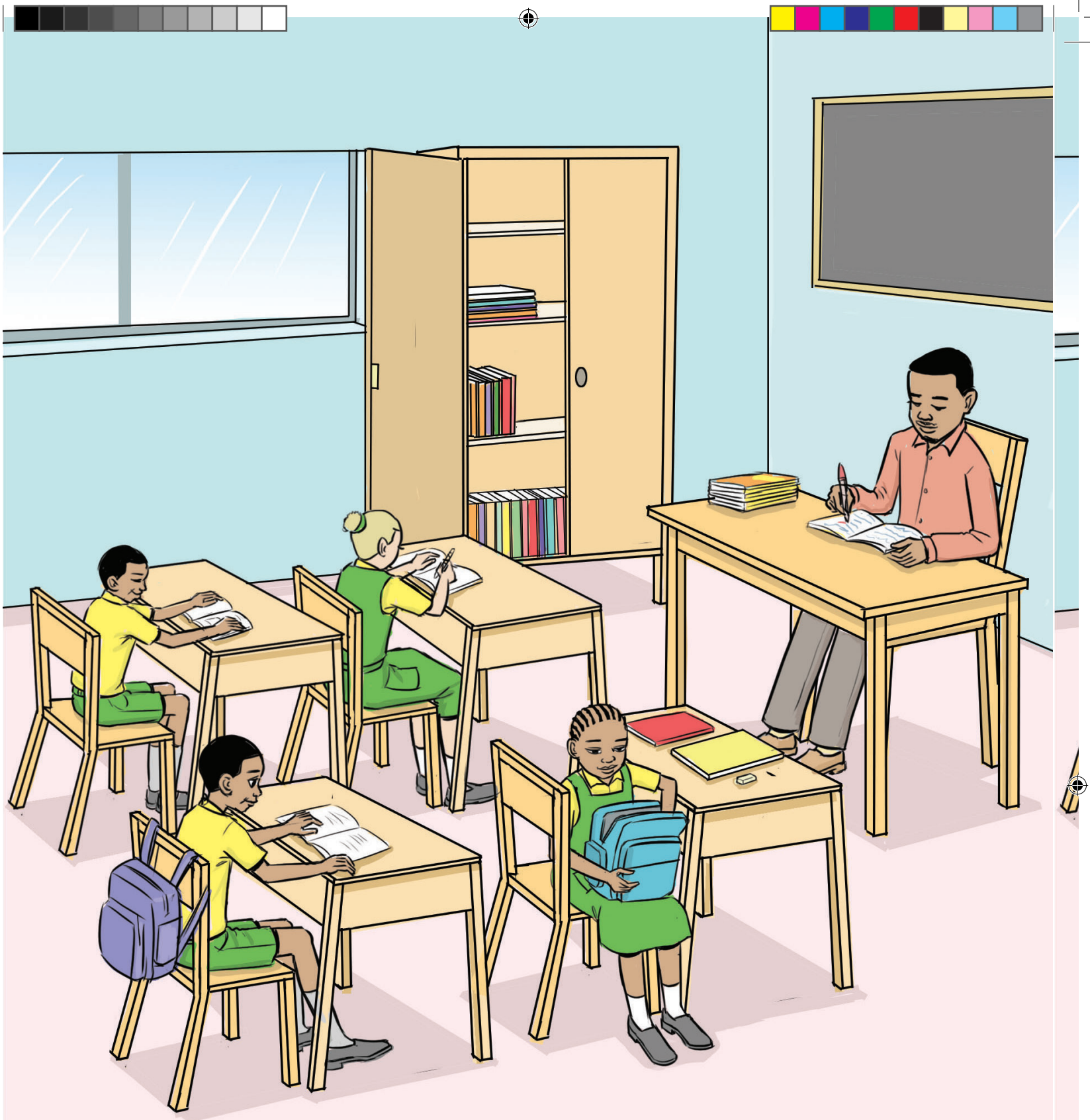
Naswa kacha kabukula sitabu mukabati. Mukabati
biabamo bitabu bikali.



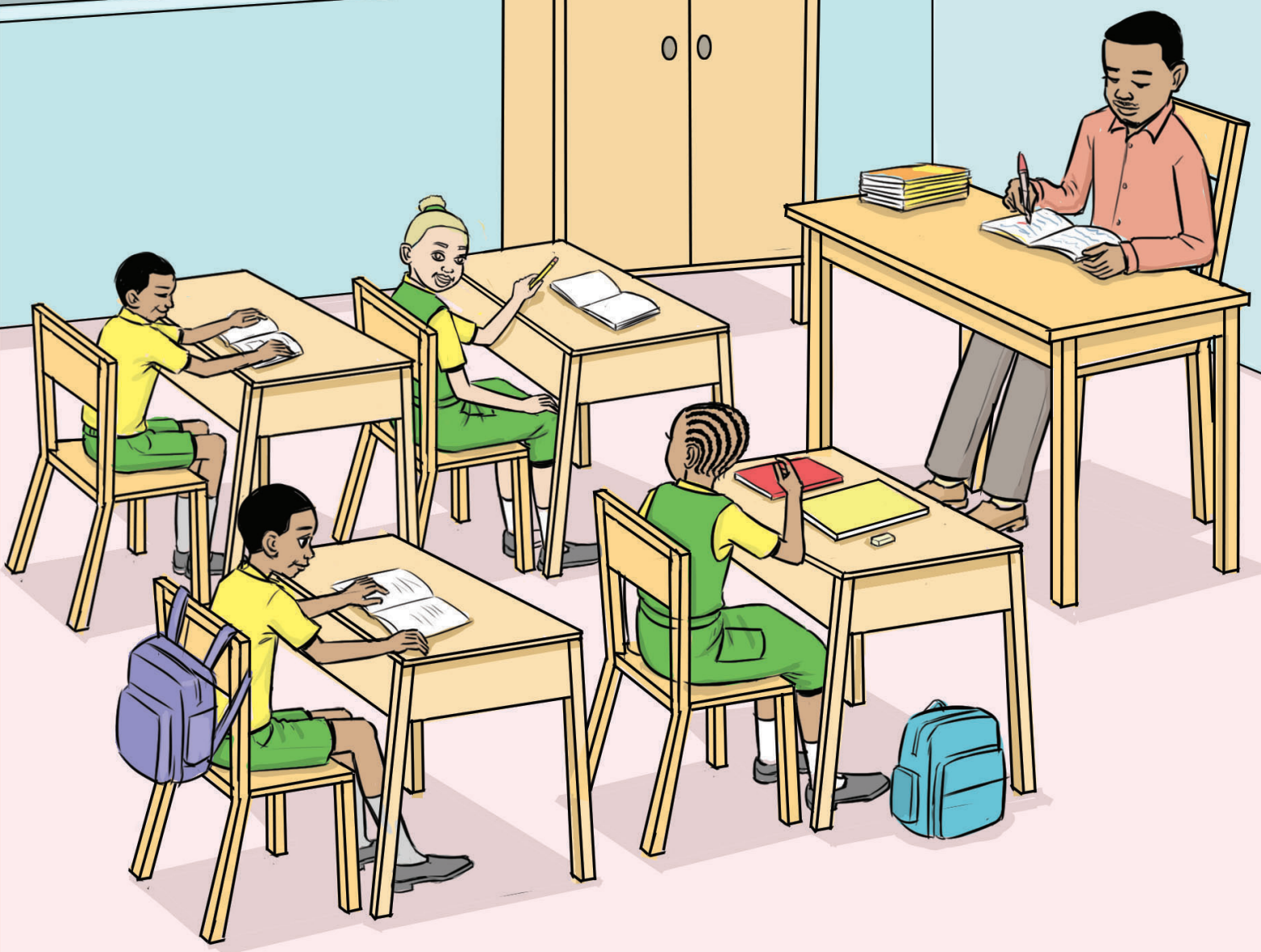
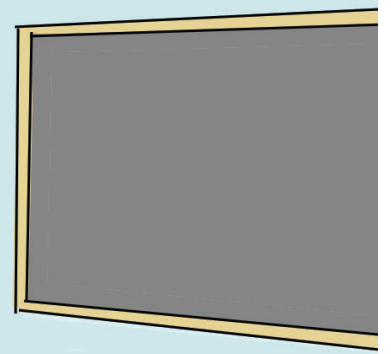
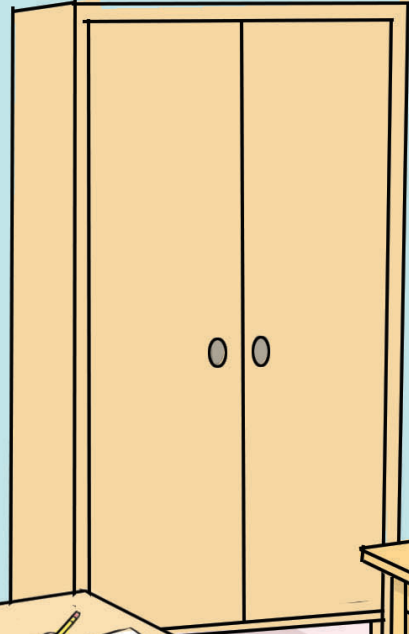
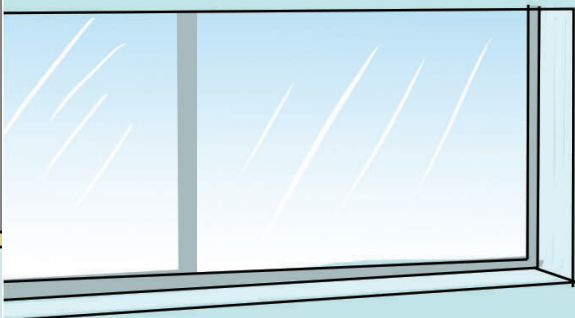


Naswa kenya khuchora epicha. Naswa amanyile
khuchora.

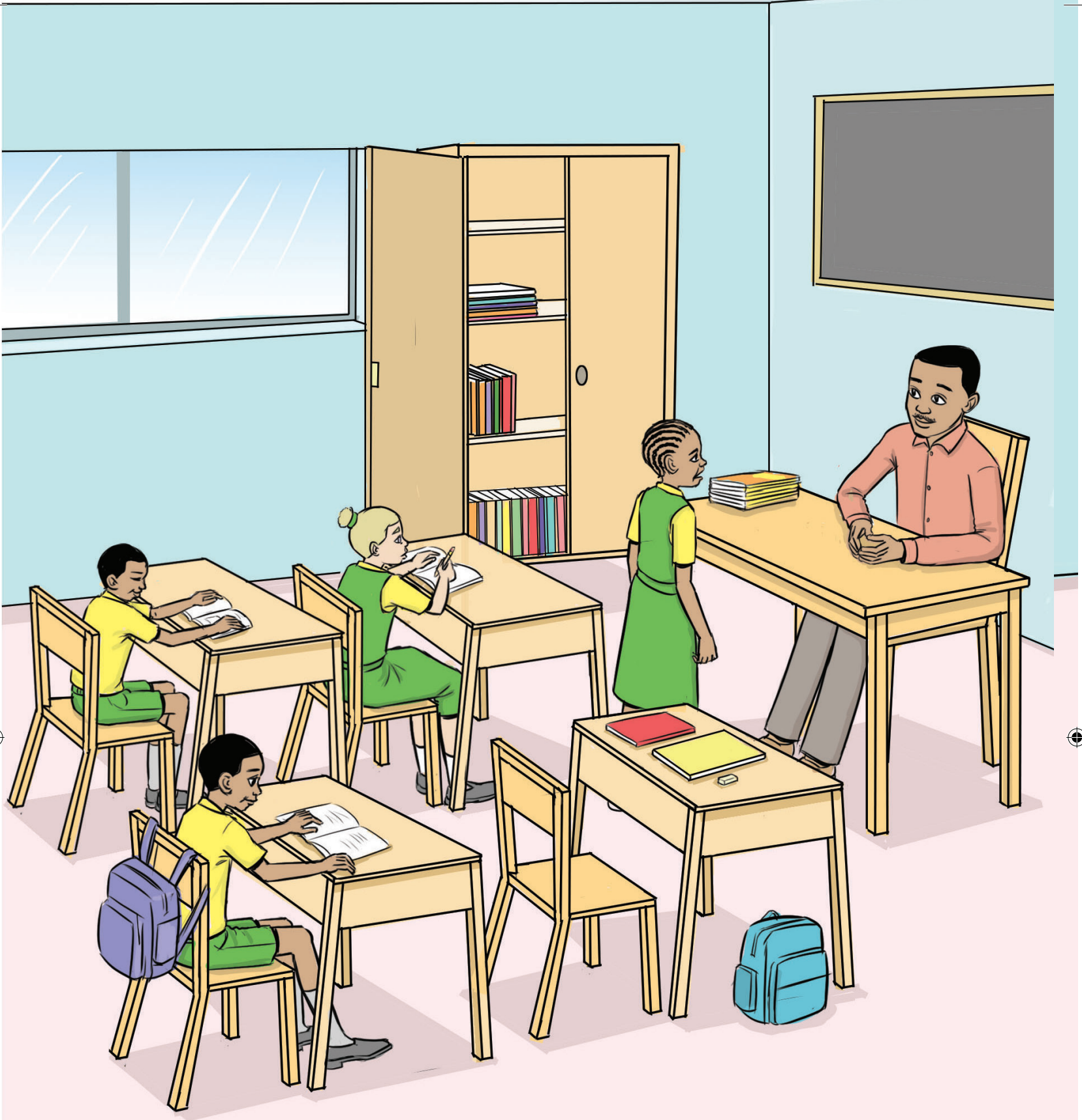




Naswa kekhalala mala kayima ekalamu mumufuko.



Naswa kareba Nabucha kabali abukule ekalamu yewe. Nabucha kaloma ali sabukule tawe.



Naswa kalila, mala kacha khubolela mwalimu.

“Nabucha kebile ekalamu yase.” Naswa kaloma.





Mwalimu kalanga Nabucha mala kamureba nabukule ekalamu ya Naswa.





Nabucha kaloma ali sabukule ekalamu tawe. Naswa kaboleta mwalimu ali amubone ne abukula.



Nabucha kaloma ali ekalamu yewe efwana nende ekalamu ya Naswa. Naswa kaloma ali ekalamu eyo yewe.



Mwalimu kabolela Naswa aole mufuko mwewe
mwe engubo.



Naswa kanyola ekalamu yewe mumufuko mwe engubo. Mwalimu kamubolela ali akhalanga owasie omwifi mala se abone ne abukula ekalamu ta.





Naswa kasangala khunyola ekalamu mala kakhesia Nabucha. Naswa nende Nabucha bacha bekhala asi mala bachaka khuchora.