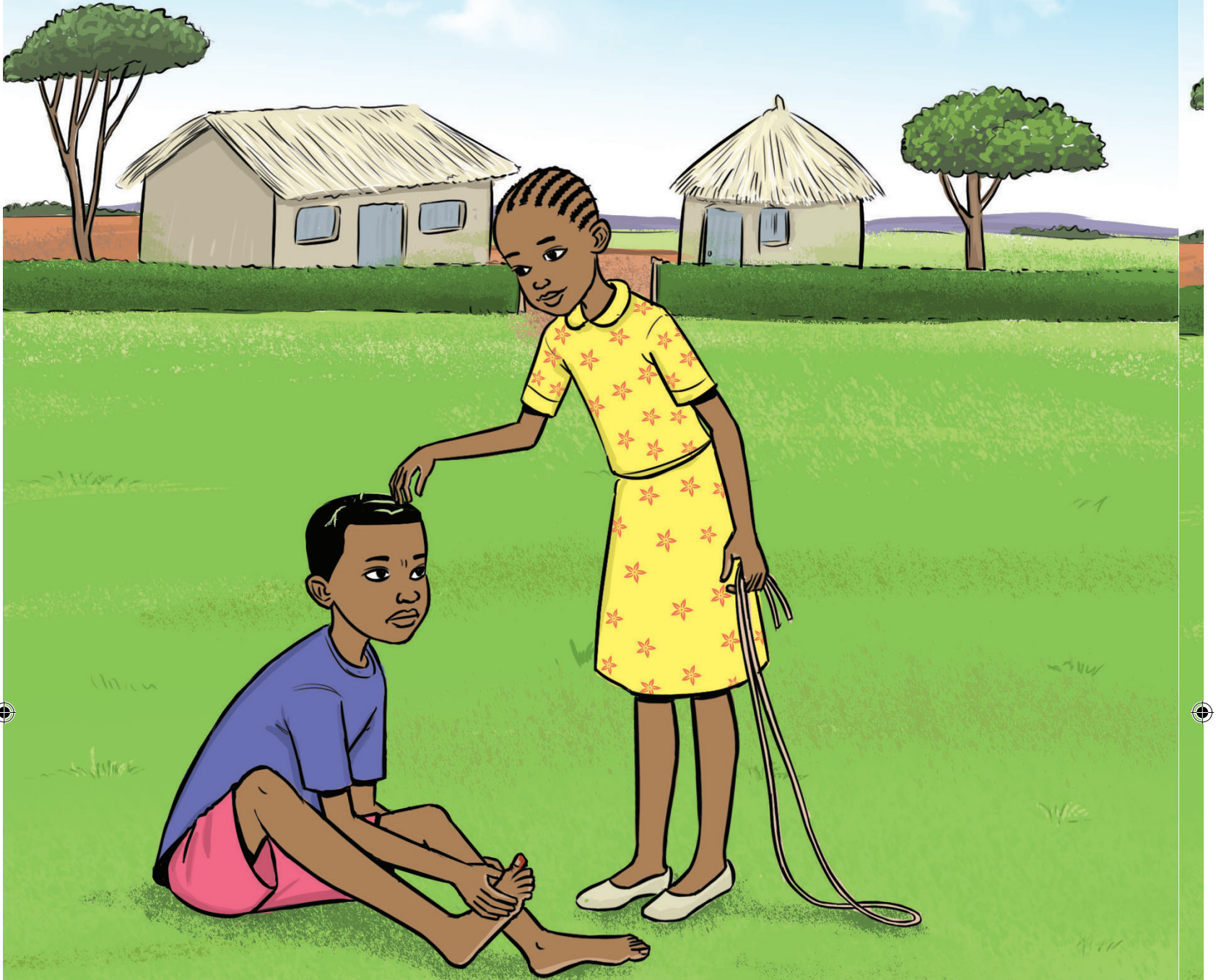




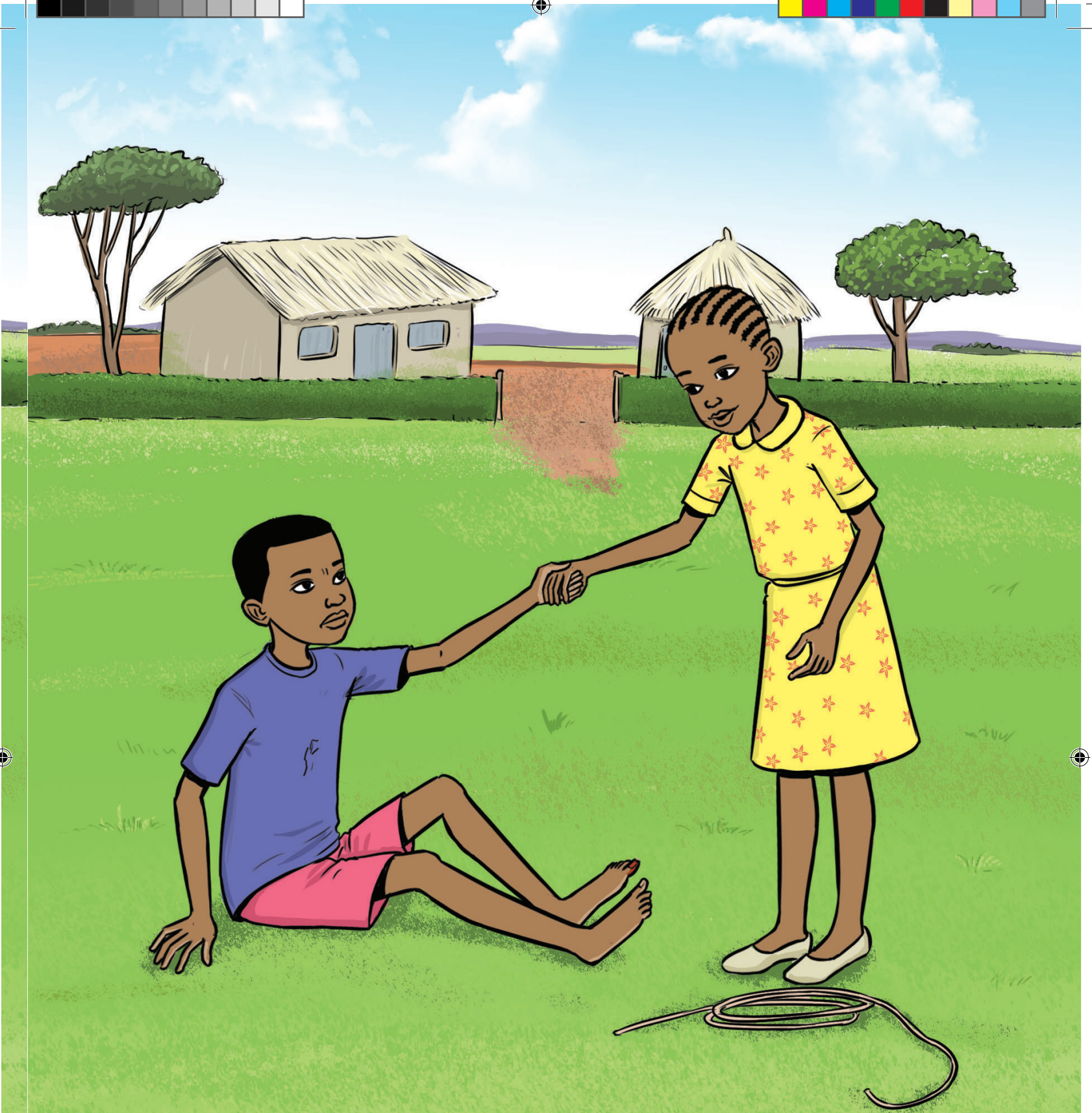
Lusaka kasima khutima. Endalo ndala abele
khatima mala kakwa. Lusaka kekhala asi kalola
lulwala luumie.





Khalayi kaboleta Lusaka ali kalaa. Khalayi kabona
bunyasi khumurwe kwa Lusaka mala kamurusia
bunyasi khumurwe.





Khalayi kaboleda Lusaka kenyokhe. Lusaka
kenyokha.





Lusaka nga ken yokha kema khusikele silala. Lusaka
kelocha ali lulwala lumuchuna.





Kumukongo kwa Lusaka kwabakho lufumbi. Khalayi kamureba kabali kaumie kumukongo. Lusaka kaloma ali sekaumie mumukongo ta.





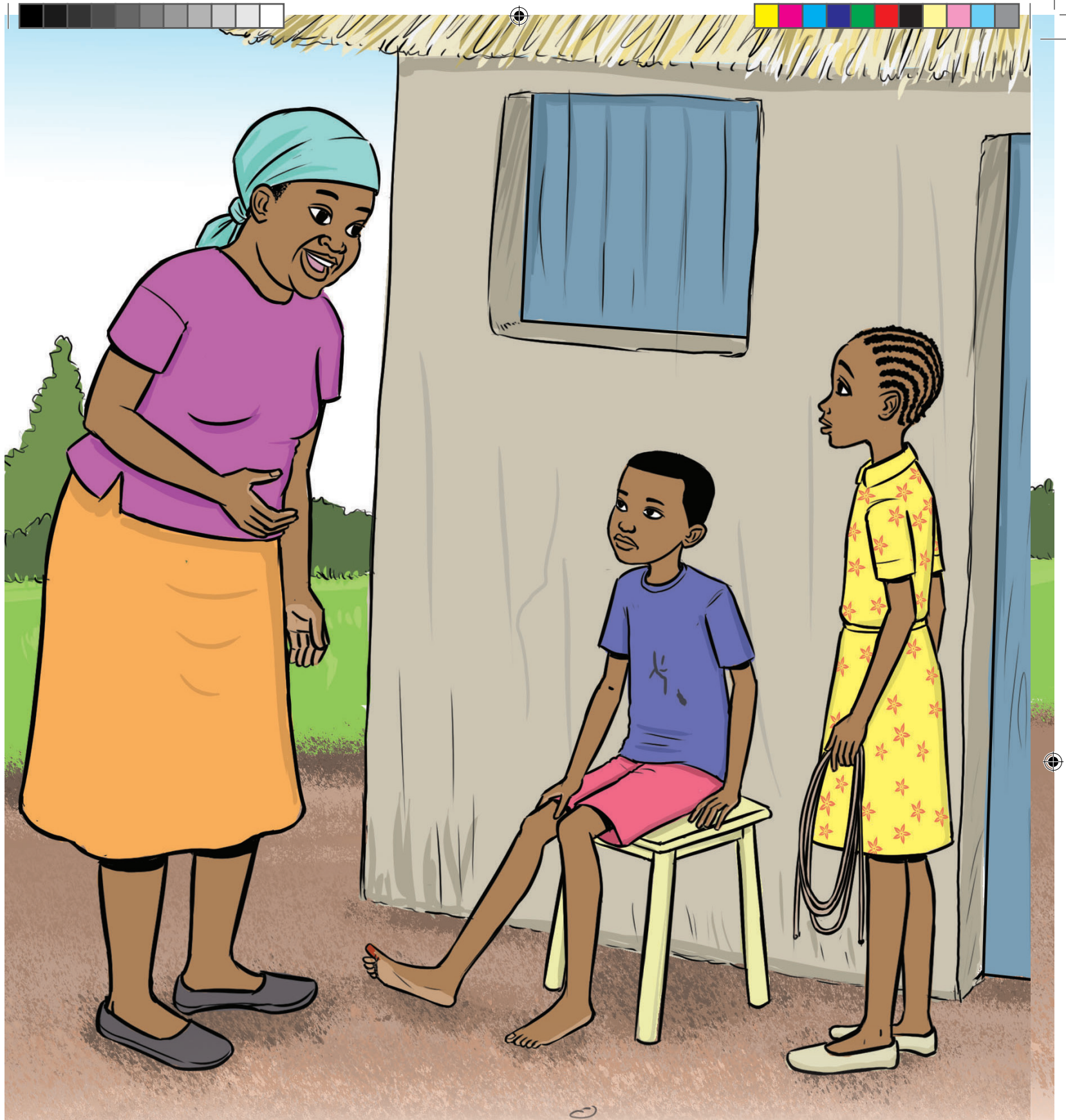
Khalayi kamuamba Lusaka mumaa mala kamuyeta
khukenda.





Khalayi nalikho amuyeta, Lusaka kaba aulila
burafu.





Khalayi kamukesia mala kamwosia engo. Mayi wa Lusaka kenya khumanya sina sibi.



Lusaka kaloma ali abele atima mala khulola asi ta, liwa liamuuna. Mayi wa Lusaka kamubolela ali natima alole asi.



Mayi kamupangusia sikele siumie khukhwamila mulisikamo. Mayi nalikho amupangusia, Lusaka kaba aulila burafu.



“Sikila sina lisiati liatabukhe khusifuba.” Mayi kareba. Lusaka aloma ali sikila akwile. Mayi wewe kamuila mwsibito.



Dakitari kamusilikha mala kaloma ali alaola.

Dakitari yesi kamuboela ali natima afware biraro
nio liwa likhamuuna tawe.