

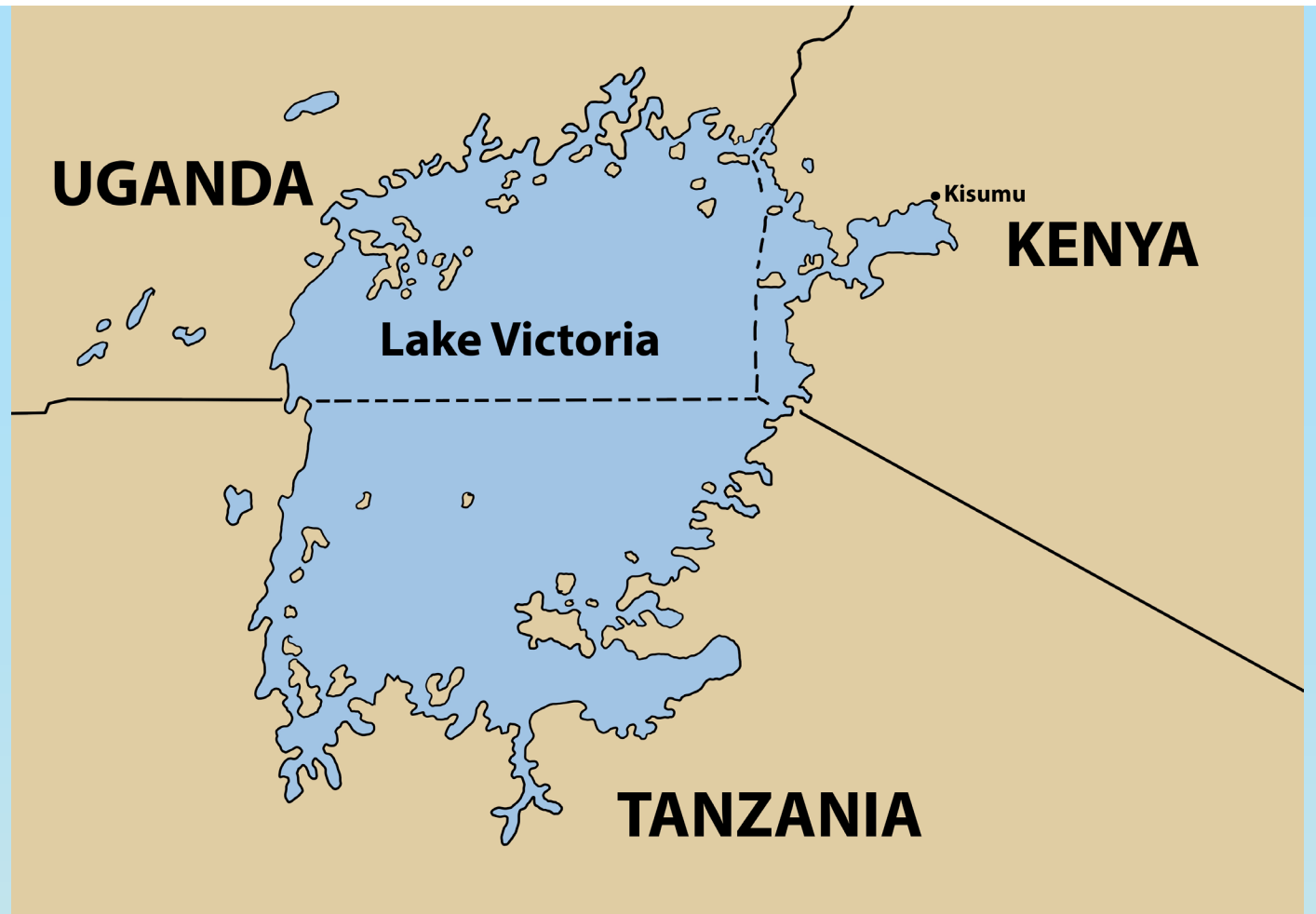
Nitiere kuonde mang'eny ma welo nyalo neno e Luo Nyanza. Luo Nyanza nigi kaonti ang'wen. Magi gin Homabay, Siaya, Kisumu gi Migori.





God Uma nitie Homabay. Bala yudore kanyo. Bala chalo ka ratuon. Jamni ohero nang'o bala.





Nam Lolwe en nam maduong' e Kenya mangima.
Pige mit kendo yom. Gima timore marach en ni ji
lilo pi nam. Mae kelo tuoche mathoth ne ji.





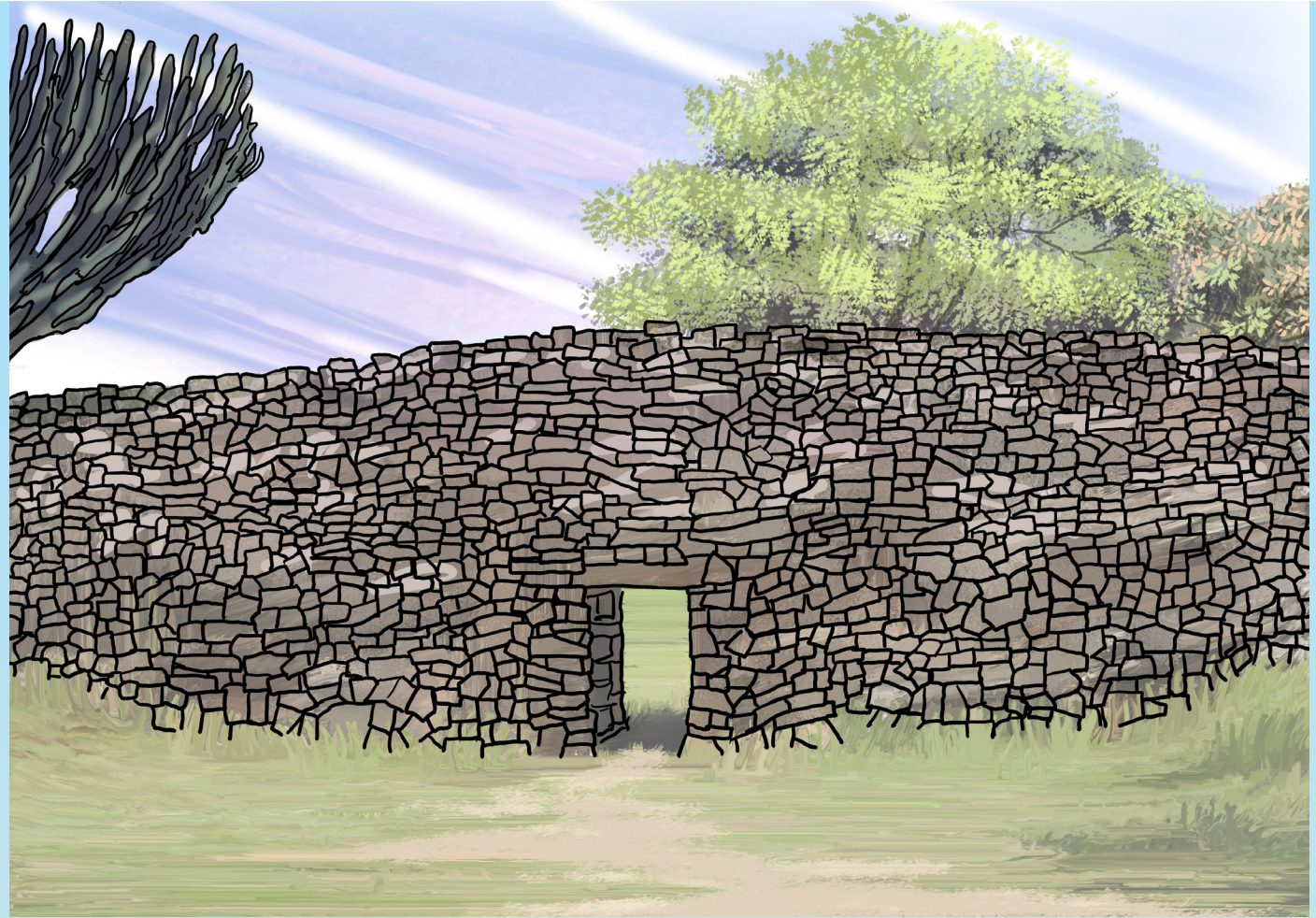
Simbi en nam matin mayudore machiegni gi
Kendubay. Winy mopogore opogore yudore Nam
Simbi. Jok moko wacho ni pi mawuok e Simbi
thiedho tuoche mopogore.





Kar neno le ma Kisumu iluongo ni Impala. Gi dho ngere iluonge ni *Impala Park*. Kae ineno le kaka jowi, sibuur kata opuk.





Thimlich Ohinga yudore e kaonti ma Migori.

Thimlich Ohinga en bungu ma otwere ti ma ji ok odakie. Awuoro kaka kite go obedo ma onge gima omakogi.





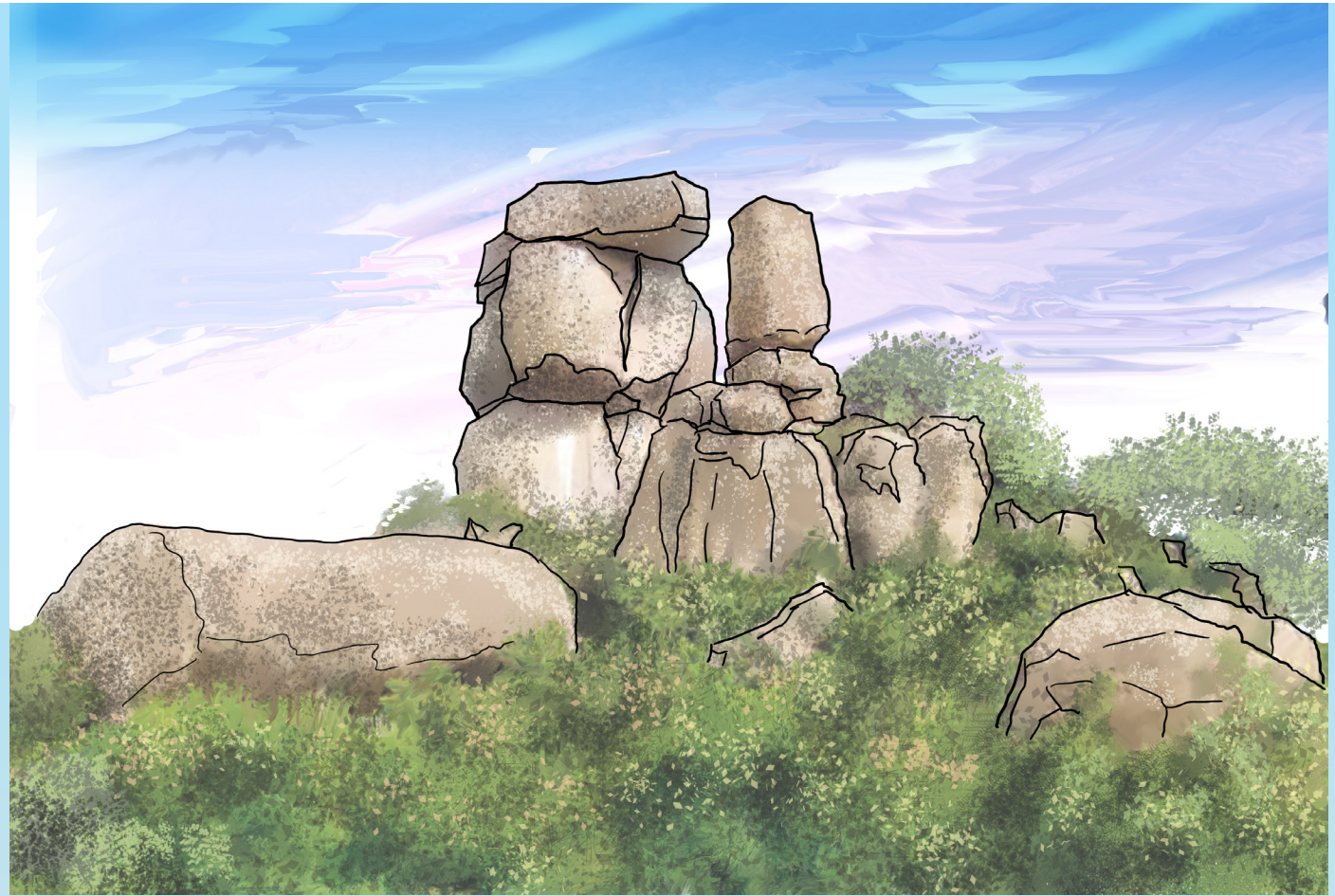
Kar neno le ma Ruma nitie Lambwe. Lambwe nitiere e kaonti ma Homabay. Winy machiegni lal e piny kae yudore Ruma.





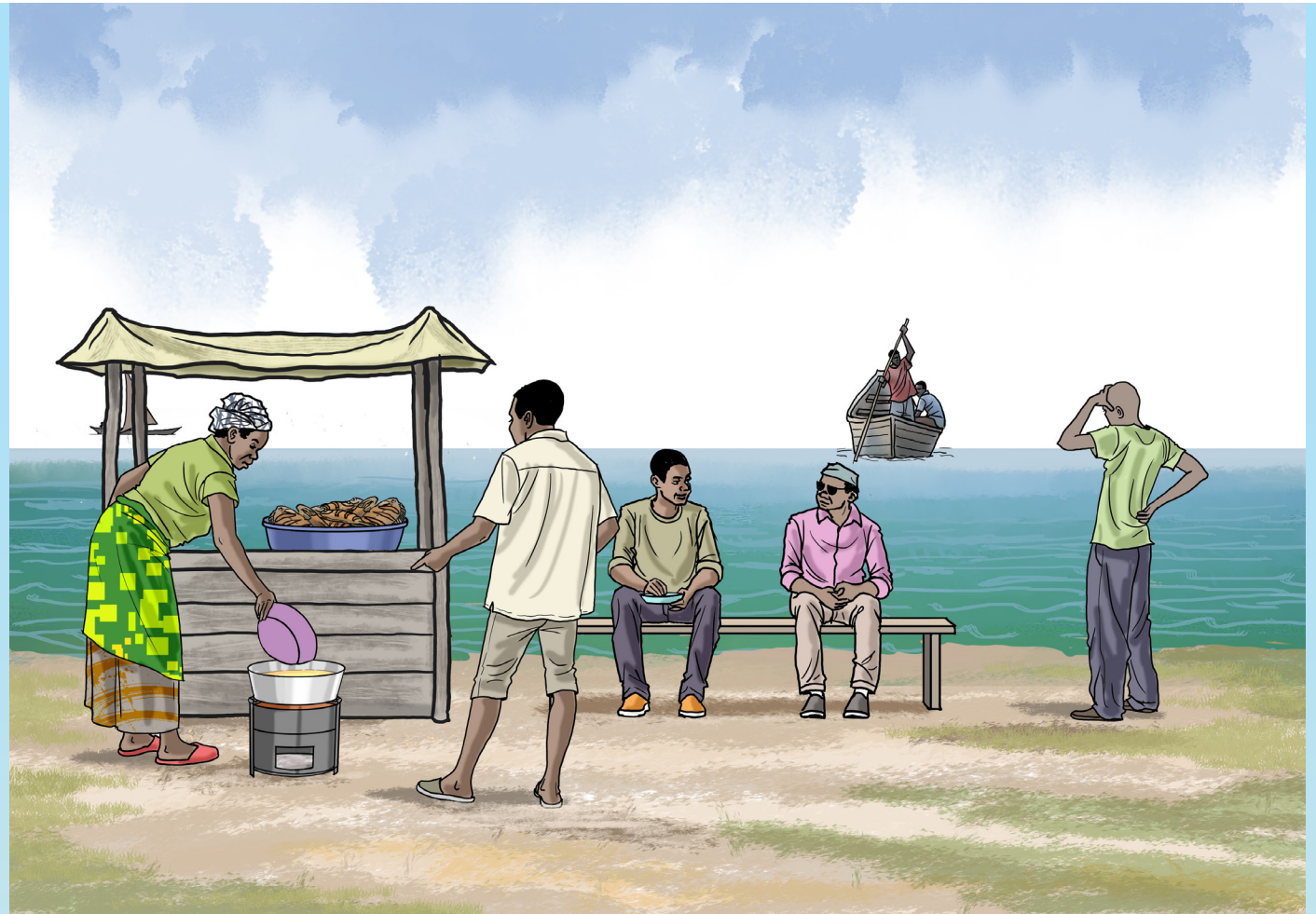
Ndere en chula ei Nam Lolwe. Oyudore e kaonti ma Kisumu. Yamo mokue kudho e chula mar Ndere.





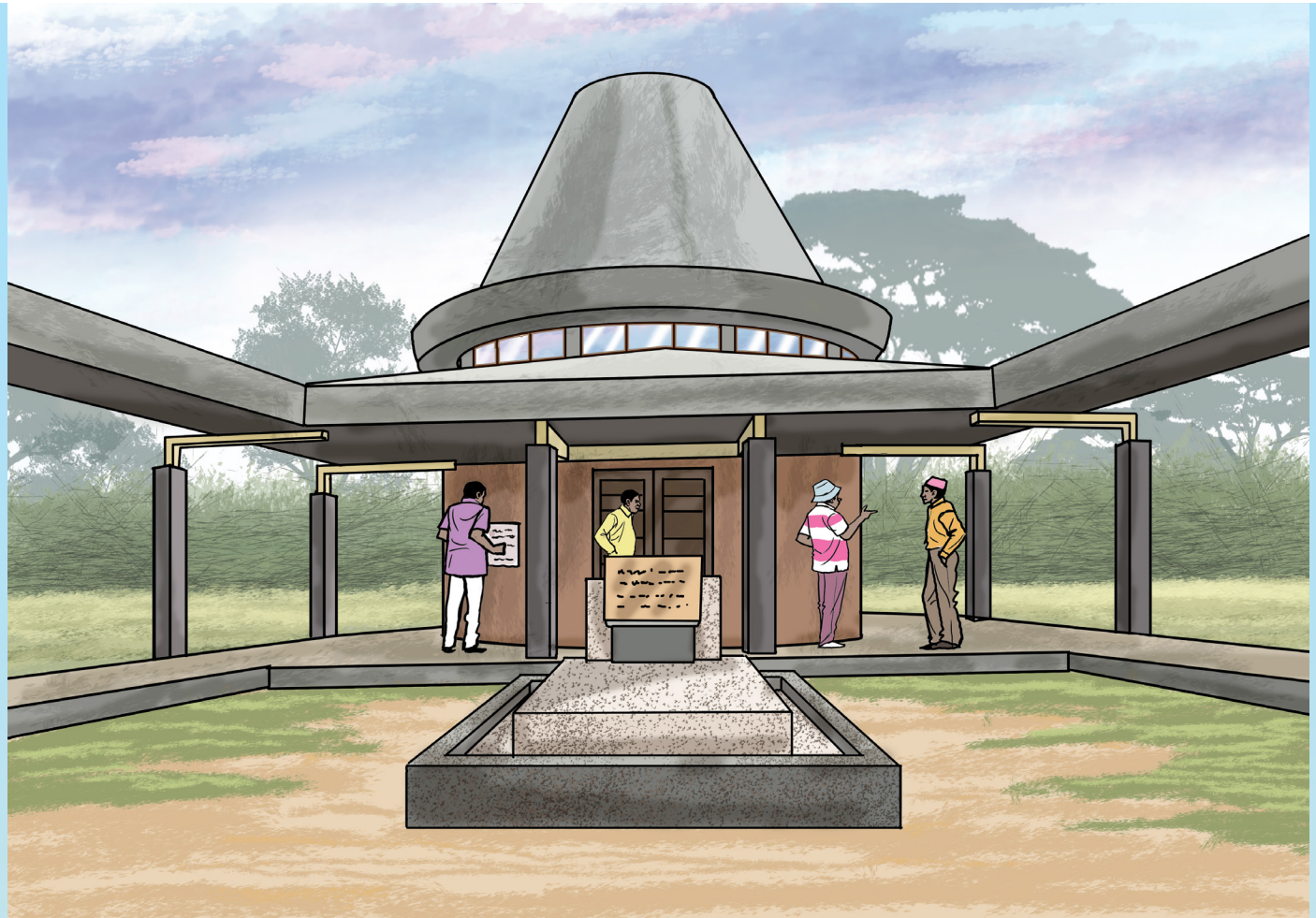
Kit mikayi nitiere yo madhi Seme ka ia Kisumu. Gin kite ma oluore ewi wadgi. Kit Mikayi en ranyisi mar dhako maduong’.





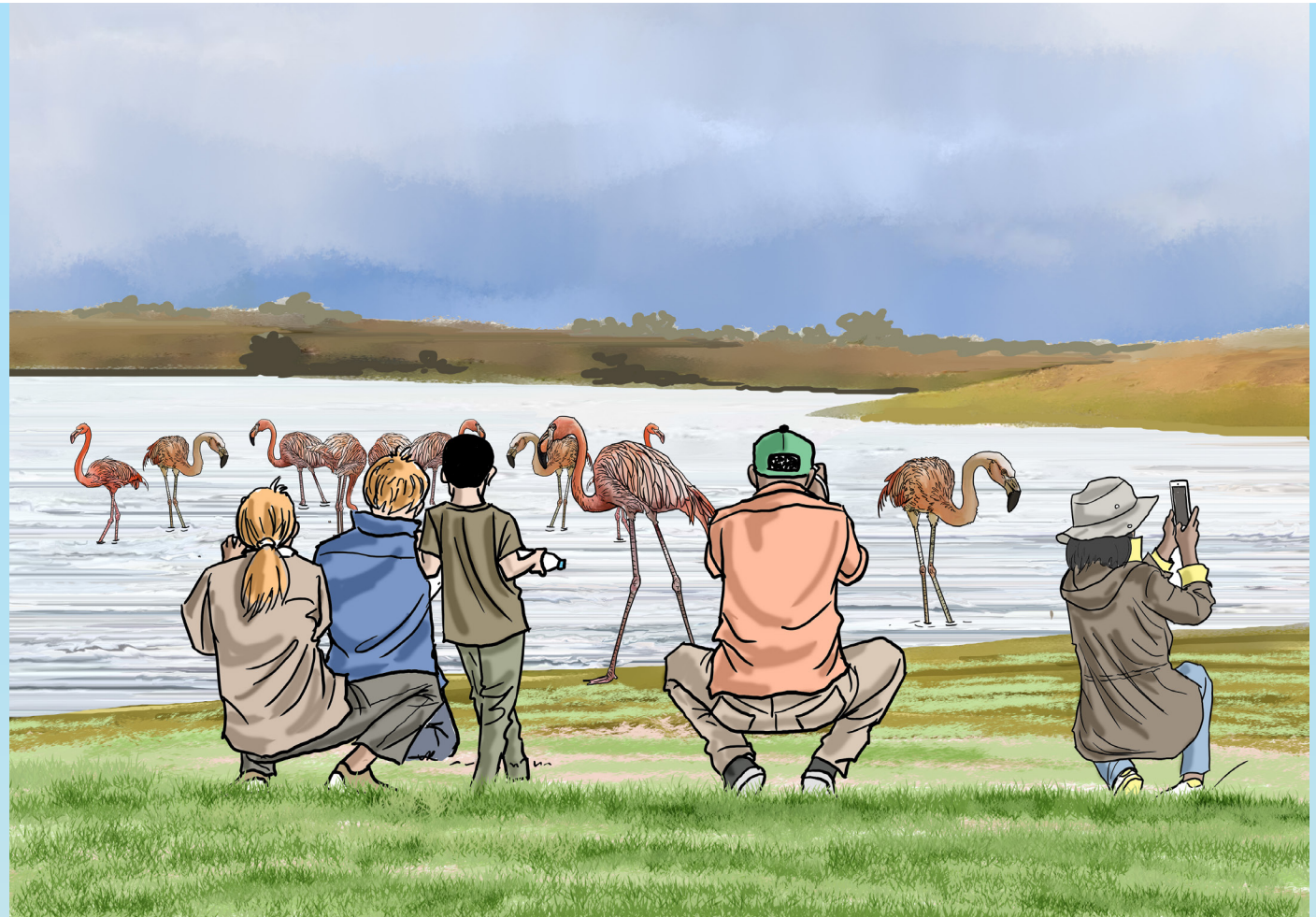
Be igombo chamo rech maduong' kendo mamit? E dho wath Dunga e kuma itedoe rech mamit. Dunga nitiere Kisumu.





Tom Mboya ne en wuod Rusinga malich. Oyiene ji dhi neno kama ne oike Rusinga. Bende idwaro neno kama noiike Tom Mboya?





Waruako welo mondo olim kuondegi gi kuonde mamoko. Ibiro chamo chiemb Joluo ma oted gi mo alenya. Magira bende nyaka imadhi.

